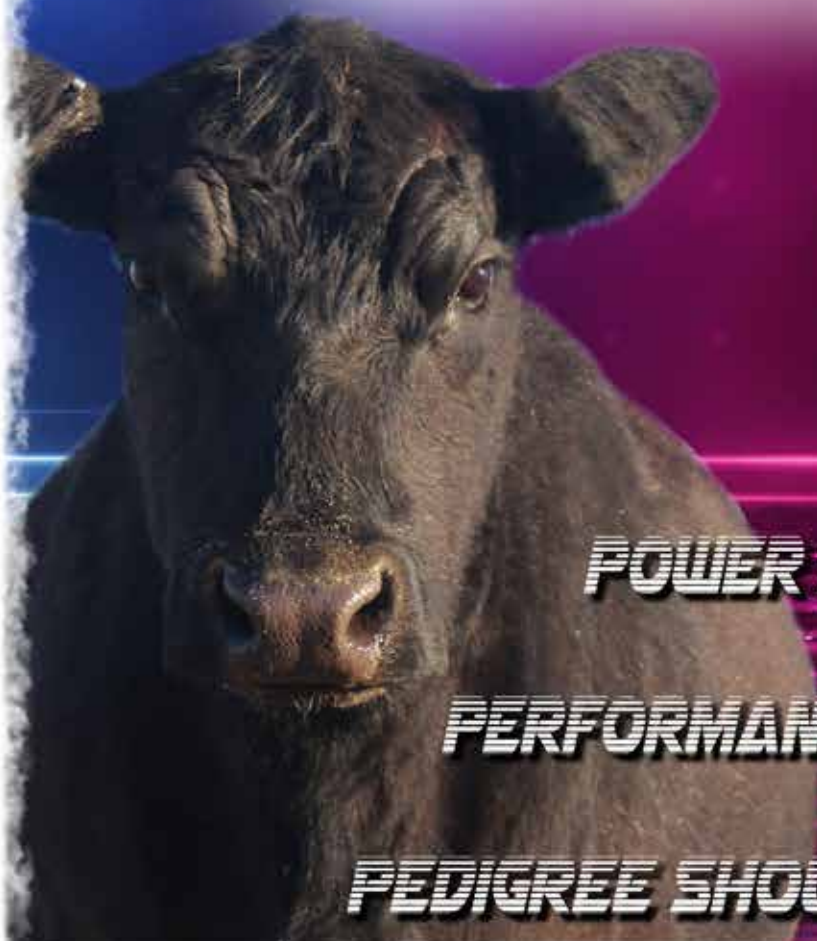


#POWERALE

PERFORMANCE PEDIGREE S

The Best Angus Genetics in the Midwest

OCTOBER 8, 2022 1 PM
MOUNTAIN GROVE, MISSOURI



POWER FEMALES

PERFORMANCE BULLS

PEDIGREE SHOW CATTLE

Bid Online www.LiveWireAuction.com

POWER PERFORMANCE PEDIGREE

October 8, 2022
1 PM
Wright County
Livestock Auction
Mountain Grove, MO

Sale Location: 8915 Business 60, Mountain Grove, MO 65711



AUCTIONEER
Jerry Lehmann
573-999-4759



RINGMAN
Scott Crawford
816-804-1410



RINGMAN
Brett Sayre
573-881-1876



**PICTURES, VIDEOS, & ONLINE
BIDDING AVAILABLE AT
WWW.LIVEWIREAUCTION.COM**

Dear Cattlemen & Cattlewomen-

I am so excited to invite you to the inaugural Power Performance Pedigree Sale. An extraordinary set of consigners have brought you an elite set of performance tested and pedigreed animals. The animals in this sale must qualify for the sale through DNA and EPD's. Power & performance cattle must have 7 of the EPD's in the catalog TOP 50% or better, and show animals must be halter broke and able to lead. We feel this will give you the best set of animals available for purchase, and give you every bit of available information in your decision making progress.

Whether you plan to attend the sale in person, bid via phone or Internet, we are here for you! We have 4 experienced and knowledgeable sale representatives that are here to help. These individuals can evaluate lots or handle bids for you. Rest assured proxy bids, phone bids, and Internet bids are handled in a secure and confidential matter.

The set of bulls and females in this sale are some of the best animals available with many of them having EPD's that are TOP 1%. Many of our consigners have noted, they wanted to bring you something really special and that it is hard to want to part with such an excellent animal. There are many sale attractions in this throughout the catalog. Whatever we can do to help you please let us know. We want you, your family, and farm to be successful and safe.

Saturday October 8th, 2022 will be a great day for Angus in Midwest, so mark your calendar and be sure to join us!

Thank you-



Phoebe Wiles
Sale Manager
417-293-8002

**SALE DAY PHONES:
SALE MANAGER AND RINGMEN**
Online Bidding
www.LiveWireAuction.com

JUNIORS & 4H/FFA YOUTH

There will be a drawing before the sale for multiple \$100 junior discounts to be used on the purchase of any female during the sale. The raffle is limited to one use per junior per year.

All buyers invited to view the sale animals morning of sale day.

Rules for the Fall 2022 Sale

This is The Power Performance Pedigree Sale held in Mountain Grove, MO. Commercial and purebred buyers will have individual performance data available, along with pedigree, to select prospective bulls and females.

- A. The bulls eligible for the sale must be no older than 30 months at sale date.
- B. The females eligible for the sale must be no older than 7 years at sale date.
- C. All bulls nominated must be weighed at weaning (between 160 and 280 days of age.)
- D. The bull's yearling weight must be taken (320 to 440 days). He must have a 365 day weight of 1000 pounds or better.
- E. Performance Bulls must rank in the 50th percentile or better for 7 of the following EPD traits: CED, BW, WW, YW, RADG, SC, HP, CEM, Milk, Doc, CW, Marb, RE, Fat, \$M, \$W, \$B, and \$C for non-parent bulls in the most recent sire evaluation.
- F. Performance Females must rank in the 50th percentile or better for 7 of the following EPD traits: CED, BW, WW, YW, RADG, SC, HP, CEM, Milk, Doc, CW, Marb, RE, Fat, \$M, \$W, \$B, and \$C for non-parent cows or current dams based on age. "A" lots may qualify through their dam.
- G. Show cattle may qualify as long as they are halter broke and able to lead.
- H. All lots over 7 months of age should have DNA & a genomic profile applied for.
- I. Age of dam adjustments will follow the breed associations guidelines.
- J. All bulls must be semen tested and examined for breeding soundness by a veterinarian within 60 days of sale, using standard assay analysis of semen approved by the College of Veterinary Medicine, University of Missouri.
- K. Scrotal circumference as taken by the producer's veterinarian during the breeding soundness exam will be reported sale day. Minimum circumference 33cm.
- L. All animals will be at the sale location by 6:00 p.m. day prior to the sale.
- M. Information not available at press time will be available sale day on supplemental sheets.
- N. All cows that sell as bred and safe in calf must have a pregnancy examination within 30 days of sale and stated stage on health papers.
- O. Consignors shall furnish an official health certificate issued within 30 days of sale date. All calves old enough to be split from dams will need a separate health paper.

TERMS AND CONDITIONS

TIME: Sale begins at 1:00 p.m. October 8, 2022.

BIDDING: A floor price will be \$2000 on bulls.

TERMS: The terms of the sale are cash. Bring your personal or local bank check.

DISPUTES: The auctioneer will settle any and all disputes as to bids by declaring all bids off and reselling the animal in question.

HANDLING: Each animal will be purchaser's risk as soon as sold, but will be cared for by the owner for a reasonable period until they are loaded, free of charge to the purchaser but at his risk of loss or injury. All animals are sold and will be paid prior to loading.

CERTIFICATES: A certificate of registry and transfer will be furnished for each animal sold by respective breeder.

BREEDING GUARANTEE: All animals of breeding age (15 months or older) at time of sale are guaranteed breeders. Animals are guaranteed breeders if properly cared for and not used within the herd until 15 months of age. Any bull which settles at least one third of the healthy cows he breeds will be considered a breeder. Any animal that has not proven itself a breeder within six months after the sale date, if in healthy condition, and meeting the health regulations of the State of Missouri, may be returned to the farm of the seller, at the buyer's expense. The seller reserves the privilege of trying for a period of six months, to prove the animal a breeder. Should an animal fail to prove a breeder in the specified time period, the seller will refund the purchase price which shall be considered as full settlement and satisfaction of all claims. All complaints regarding breeding difficulties must be reported in writing by the buyer to the seller within six months.

ANNOUNCEMENTS: Announcements from the auction box will take precedence over the printed matter in this catalog.

CONTRACT: The above terms and guarantee shall constitute a contract between the buyer and seller of each animal sold. All animals sell under the standard terms and conditions set forth by the American Angus Association.

SALE ORDER: The lots will sell from the oldest to the youngest, in their respective classes. In cases of identical birth dates, the bull with the greater yearling weight will sell first. The females will sell from the oldest to the youngest. In cases of identical birth dates, the female with the greater yearling/weaning weight will sell first.

HEALTH: Bulls have been vaccinated for five strains of Lepto within 60 days of the sale. Health certificates will be furnished. Non-virgin and bulls over 24 months in age will be tested for trich.

LIABILITY: All persons who attend the sale do so at their own risk, the sale committee, The Power Performance Pedigree Sale, Live Wire Auction LLC, and Wright County Livestock Auction assume no liability, legal, or otherwise.

Expected Progeny Difference (EPD), is the prediction of how future progeny of each animal are expected to perform relative to the progeny of other animals listed in the database. EPDs are expressed in units of measure for the trait, plus or minus. Interim EPDs may appear on young animals when their performance has yet to be incorporated into the American Angus Association National Cattle Evaluation (NCE) procedures. This EPD will be preceded by an "I", and may or may not include the animal's own performance record for a particular trait, depending on its availability, appropriate contemporary grouping, or data edits needed for NCE.

Accuracy (ACC), is the reliability that can be placed on the EPD. An accuracy of close to 1.0 indicates higher reliability. Accuracy is impacted by the number of progeny and ancestral records included in the analysis.

Percentile Rank - As the percentile moves toward 1, it indicates this animal is top X% of the Angus Breed

Calving Ease Direct (CED), is expressed as a difference in percentage of unassisted births, with a higher value indicating greater calving ease in first-calf heifers. It predicts the average difference in ease with which a sire's calves will be born when he is bred to first-calf heifers.

Birth Weight EPD (BW), expressed in pounds, is a predictor of a sire's ability to transmit birth weight to his progeny compared to that of other sires.

Weaning Weight EPD (WW), expressed in pounds, is a predictor of a sire's ability to transmit weaning growth to his progeny compared to that of other sires.

Yearling Weight EPD (YW), expressed in pounds, is a predictor of a sire's ability to transmit yearling growth to his progeny compared to that of other sires.

Residual Average Daily Gain (RADG), expressed in pounds per day, is a predictor of a sire's genetic ability for postweaning gain in future progeny compared to that of other sires, given a constant amount of feed consumed.

Scrotal Circumference EPD (SC), expressed in centimeters, is a predictor of the difference in transmitting ability for scrotal size compared to that of other sires.

Heifer Pregnancy (HP), is a selection tool to increase the probability or chance of a sire's daughters becoming pregnant as first-calf heifers during a normal breeding season. A higher EPD is the more favorable direction and the EPD is reported in percentage units.

Calving Ease Maternal (CEM), is expressed as a difference in percentage of unassisted births with a higher value indicating greater calving ease in first-calf daughters. It predicts the average ease with which a sire's daughters will calve as first-calf heifers when compared to daughters of other sires.

Maternal Milk EPD (Milk), is a predictor of a sire's genetic merit for milk and mothering ability as expressed in his daughters compared to daughters of other sires. In other words, it is that part of a calf's weaning weight attributed to milk and mothering ability.

Docility (Doc), is expressed as a difference in yearling cattle temperament, with a higher value indicating more favorable docility. It predicts the average difference of progeny from a sire in comparison with another sire's calves. In herds where temperament problems are not an issue, this expected difference would not be realized.

Carcass Weight EPD (CW), expressed in pounds is a predictor of the differences in hot carcass weight of a sire's progeny compared to progeny of other sires.

Marbling EPD (Marb), expressed as a fraction of the difference in USDA marbling score of a sire's progeny compared to progeny of other sires.

Ribeye Area EPD (RE), expressed in square inches, is a predictor of the difference in ribeye area of a sire's progeny compared to progeny of other sires.

More on EPD's

Fat Thickness EPD (Fat), expressed in inches, is a predictor of the differences in external fat thickness at the 12th rib (as measured between the 12th and 13th ribs) of a sire's progeny compared to progeny of other sires.

Maternal Weaned Calf Value (\$M), an index, expressed in dollars per head, predicts profitability differences from conception to weaning with the underlying breeding objective assuming that individuals retain their own replacement females within herd and sell the rest of the cull female and all male progeny as feeder calves. The model assumes commercial producers will replace 25% of their breeding females in the first generation and 20% of their breeding females in each subsequent generation. Traits included are as follows: calving ease direct, calving ease maternal, weaning weight, milk, heifer pregnancy, docility, mature cow weight, claw set and foot angle.

Weaned Calf Value (\$W), an index, expressed in dollars per head, to predict profitability differences in progeny due to genetics from birth to weaning. The underlying objective being producers will retain 20% of the female progeny as replacements and sell the rest of the cull females and their male counterparts as feeder calves. Traits included are as follows (in no particular order): birth weight, weaning weight, milk, and mature cow weight.

Beef Value (\$B), a terminal index, expressed in dollars per carcass, to predict profitability differences in progeny due to genetics for postweaning and carcass traits. This terminal index assumes commercial producers wean all male and female progeny, retain ownership of these animals through the feedlot phase and market these animals on a carcass grid. Traits included in the index are as follows: yearling weight, dry-matter intake, marbling, carcass weight, ribeye area and fat.

Combined Value (\$C), an index, expressed in dollars per head, which includes all traits that make up both Maternal Weaned Calf Value (\$M) and Beef Value (\$B) with the objective that commercial producers will replace 20% of their breeding females per year with replacement heifers retained within their own herd. The remaining cull heifer and steer progeny are then assumed to be sent to the feedlot where the producers retain ownership of those cattle and sell them on a quality-based carcass merit grid. Expected progeny differences (EPDs) directly influencing a combined index: calving ease direct (CED) and maternal (CEM), weaning weight (WW), yearling weight (YW), maternal milk (Milk), heifer pregnancy (HP), docility (DOC), mature cow weight (MW), foot angle (Angle), claw set (Claw), dry matter intake (DMI), marbling (Marb), carcass weight (CW), ribeye area (RE) and fat thickness (Fat).

Abbreviations

(I*) Interim EPDs - Interim EPDs are EPDS that are calculate as a provisional or temporary EPDs. Interim with pedigree only- in this case only pedigree information is available, sometimes called a pedigree index, and past relatives EPDs are involved in calculating the interim EPD. While admittedly low in accuracy, an interim value gives you a snapshot of the animal's value as a parent, and, thus, it provides a temporary selection-decision tool.

Fall 2022 Breed Averages EPDs & \$Values

	CED	BW	WW	YW	RADG	SC	Doc	HP	CEM	Milk	CW	Marb	RE	Fat	\$M	\$W	\$B	\$C
Non-Parent Bulls	7	1.2	61	108	0.25	0.86	18	12.1	8	26	46	0.61	0.61	0.013	63	56	137	239
Current Dams	6	1.3	54	96	0.23	0.75	15	11.5	8	26	38	0.52	0.50	0.012	58	51	127	222
Non-Parent Cows	6	1.2	60	106	0.25	0.84	18	11.9	8	26	47	0.63	0.62	0.012	62	55	137	238

BULLS

1

BAR BLACK JACK FROST

Bull DOB: 02/18/21 Tattoo: 16 Reg: 20175148

BW 68

K C F Bennett Southside
WRR Southside 759
WRR Forever Lassie 425
Shaw Solution 66538
BAF Henrietta Pride B619
PF Henrietta Pride 6685

CED	BW	WW	YW	RADG	SC	HP	CEM	Milk
10	1.5	78	141	0.3	1.76	13.6	15	25
20%	60%	10%	10%	15%	10%	35%	2%	60%
Doc	CW	Marb	RE	Fat	\$M	\$W	\$B	\$C
31	62	0.71	0.78	0.041	73	71	160	281
4%	20%	40%	25%	85%	25%	15%	20%	15%

ANGUS GS

CED	BW	WW	YW	SC	Doc	HP	CEM	Milk	CW	Marb	RE	Fat
25	43	11	12	4	2	41	6	59	13	57	18	86

Consigner: BAR Angus Ranch Rob Price 314-974-5263

Black Jack Frost is a rugged and athletic bull with everything needed to be a herd sire. 12 of his EPDs are in the top 15% or better. His Dam is direct descendant Sitz Henrietta Pride 643T, the \$390,000 valuation female that has produced 288 genomic progeny for Express Ranches, Pollard Farms, and Deer Valley Farm. His Sire is an AI son of KCF Bennett SouthSide, out of a Zeus Dam. He has a stacked pedigree, and a stacked set of EPDs, be sure to circle the +10 CED and TOP 2% +15 CEM, that transforms into an impressive TOP 10% WW & YW. His calves will be fleshy, uniform, and docile (+31 TOP 4%) which is money in your bank. He is a virgin bull with calving ease, so rest easy during calving season.

**BAR BLACK JACK FROST**

2

BEAU'S SOUTH SIDE 2128

Bull DOB: 03/14/21 Tattoo: 2128 Reg: 20240054

K C F Bennett Southside
WRR Southside 779
WRR Lady Nobleman 742
V D A R Really Windy 4097
Beau's Windy's 404
CVAF Cathy 7083

BW 75
ADJ 789
WW 1153
ADJ YW 6.7
FRAME 6.7

CED	BW	WW	YW	RADG	SC	HP	CEM	Milk
14	0.4	80	145	0.33	0.93	14.8	14	22
4%	35%	10%	5%	4%	45%	25%	4%	80%
Doc	CW	Marb	RE	Fat	\$M	\$W	\$B	\$C
18	60	0.13	0.67	-0.067	48	63	139	228
55%	20%	95%	40%	1%	90%	35%	50%	65%

ANGUS GS

CED	BW	WW	YW	SC	Doc	HP	CEM	Milk	CW	Marb	RE	Fat
30	72	7	3	33	39	15	32	80	6	93	18	1

Consigner: Beau's Black Angus Beau Davis 417-880-6863

Beau's South Side 2128, is one of the best spread bulls you'll find, in an extremely efficient package. Rarely do you find a bull that can work on both heifers and cows, and boast TOP 4% EPDs! He is a DOUBLE digit TOP 4% +14 CED that grows into a TOP 4% +145 YW, all with a TOP 4% RADG feed efficiency EPD. He is an extremely attractive Southside grandson that has excellent structure and feet, note his TOP 25% Claw and TOP 20% Angle EPDs. This bull will put pounds on your calves, and create females that you will want to retain in your herd (+14.8 HP Top 25% and TOP 4% CEM). Come by sale day, and see what Beau's Black Angus can add to your herd!

**K C F BENNETT SOUTHSIDE PGS OF LOT 2**

3

STP STILL MAGNUM

Bull DOB: 03/15/21 Tattoo: 276 Reg: 20133997

K C F Bennett Southside
Mead Magnitude
Mead Primrose N198
Still in the Rough 201
Still Lucy 718
Still Lucy 1120

BW 65
ADJ 668
WW 1055
ADJ YW

CED	BW	WW	YW	RADG	SC	HP	CEM	Milk
16	-2	66	119	0.26	1.44	12.8	14	37
1%	4%	35%	35%	40%	20%	45%	4%	3%
Doc	CW	Marb	RE	Fat	\$M	\$W	\$B	\$C
8	42	0.76	0.46	-0.014	65	77	137	243
90%	65%	35%	75%	20%	45%	10%	50%	50%

HD50K

CED	BW	WW	YW	SC	Doc	HP	CEM	Milk	CW	Marb	RE	Fat
1	2	28	38	14	69	29	16	4	51	26	79	45

Consigner: Simon's Tall Pines Angus Drew Simon 417-838-2521

A really thick outstanding Mead Magnitude son with a balanced set of EPDs. Notice he has 4 EPDs in the TOP 5% (CED +16, BW -2.1, CEM +14, & Milk +37), along with a gentle disposition. This makes STP Still Magnum an excellent choice for your cow/heifer production. He stems from the ever popular \$130,000 valuation Basin Lucy 6433. Still Magnum, has a very powerful pedigree, and profitability EPD spread for your cattle endeavors. With a TOP 1% CED and TOP 10% \$W, you can sleep easy during calving season and put dollars in your pocket at weaning with his high growth potential!

**STP STILL MAGNUM**

BULLS

4

BAR SOUTH SIDE TRUEMAN
 Bull DOB: 03/20/21 Tattoo: 24 Reg: 20175147
 K C F Bennett Southside
WRR Southside 759
 WRR Forever Lassie 425
 Byergo/Double GG Blackstone
WRR Lady Erica 908
 WRR Lady Erica 6107

CED	BW	WW	YW	RADG	SC	HP	CEM	Milk
9	0.9	68	117	0.26	0.44	12.6	12	36
30%	45%	30%	35%	40%	80%	45%	15%	4%
Doc	CW	Marb	RE	Fat	\$M	\$W	\$B	\$C
28	49	0.86	0.49	-0.001	67	74	149	260
10%	45%	25%	70%	35%	40%	10%	35%	30%

ANGUS GS

CED	BW	WW	YW	SC	Doc	HP	CEM	Milk	CW	Marb	RE	Fat
17	30	32	54	73	10	46	31	5	37	26	72	51

Consigner: BAR Angus Ranch Rob Price 314-974-5263
 South Side Trueman checks all the boxes! He is targeting the brand. He is fleshy, athletic, and very sound. His calves will be a chip off the block. He is the half brother Lot number 1. His Sire is an AI son of KCF Bennett SouthSide, and his dam is out of the ever popular calving ease bull Zeus. He comes from a very productive lineage with his PGDD still in production, and his PGDS still breeding cows at 12 years of age. He is Wiles Ridge Ranch bred on both sides and is ready to work in your herd for a long time! He is a direct descendant of W R R Double Power 107, who was show bull of the year at the HOA Jr Angus Shows. Be sure to check him out sale day, as he has the look and EPDs to back them!



BAR SOUTH SIDE TRUEMAN

5

SINNING'S INSIGHT J562
 Bull DOB: 04/15/21 Tattoo: J562 Reg: 20370175
 S A V Brilliance 8077
PVF Insight 0129
 PVF Missie 790
 Still in the Rough 201
E-Lee SI TR Eufala 562
 E-Lee 9126 Eulima 24

CED	BW	WW	YW	RADG	SC	HP	CEM	Milk
1	2.5	81	133	0.3	1.11	12.8	1	27
90%	80%	10%	15%	15%	35%	45%	95%	45%
Doc	CW	Marb	RE	Fat	\$M	\$W	\$B	\$C
14	77	-0.04	1.12	-0.01	47	72	160	255
70%	3%	95%	2%	20%	90%	15%	20%	35%

ANGUS GS

CED	BW	WW	YW	SC	Doc	HP	CEM	Milk	CW	Marb	RE	Fat
80	78	1	15	30	49	22	95	44	1	98	1	8

Consigner: Sinning Cattle Company Chris & Amber Sinning 417-849-6417
 Here is a very stout insight son out of a great cow we bought from Don Ely. He is a moderate frame easy keeping bull that will make a very good herd bull. Be sure to note the growth and carcass traits on this extremely phenotypical bull, TOP 5% CW and TOP 1% RE, with +71 WW TOP 25% and +.29 RADG Top 20%. Check him out on sale day, as he hits all the marks of this sale and more; Power, Performance, Pedigree, and Phenotype!



PVF INSIGHT 0129 SIRE OF LOT 5

6

WRR NEXT GEN 130
 Bull DOB: 04/20/21 Tattoo: 130 Reg: 20286280
 WRR Destination 178
WRR Next Gen
 WRR Lady Destination 533
 WRR Destination 178
WRR Lady Erica 550
 WRR Lady Erica 325

CED	BW	WW	YW	RADG	SC	HP	CEM	Milk
2	1.8	66	117	0.22	-0.22	11.2	10	30
85%	65%	35%	35%	75%	95%	60%	30%	25%
Doc	CW	Marb	RE	Fat	\$M	\$W	\$B	\$C
32	54	0.21	0.65	0.024	64	65	130	233
3%	35%	90%	45%	70%	50%	30%	60%	60%

ANGUS GS

CED	BW	WW	YW	SC	Doc	HP	CEM	Milk	CW	Marb	RE	Fat
93	80	29	41	97	3	62	29	47	32	91	28	64

Consigner: Wiles Ridge Ranch Truman Wiles 417-252-0726
 BALANCED EXTREMELY GENTLE NEXT GEN SON. His dam is a very productive cow with an average weaning weight ratio of 105 on 4 calves. 130 has a very good set of EPD's with a Top 35% WW EPD, and Top 35% YW EPD. His mother is an excellent milking cow and 130 has a Top 25% Milk EPD of 30. His TOP 3% Docility EPD is reflective of his calm easy going personality. This is a bull that can add body length and thickness to your calves.



WRR NEXT GEN 130

7 DHT TITUS 412 ACCLAIM A23

Bull DOB: 04/24/21 Tattoo: A23 Reg: 20236585

Jindra Acclaim

DHT 067 Acclaim Dimen 412

DHT Discovery 505 Embly 067

Byergo Titus 6340

DHT 574 Lass Titus Queen 414

DHT 5050 SS Lass Image Model

BW	80
ADJ	691
WW	
ADJ	1179
YW	
FRAME	7

CED	BW	WW	YW	RADG	SC	HP	CEM	Milk
0	5.8	104	189	0.37	1.09	15.8	13	26
95%	95%	1%	1%	35%	15%	10%	50%	
Doc	CW	Marb	RE	Fat	\$M	\$W	\$B	\$C
30	98	0.65	1.05	-0.042	67	74	205	333
5%	1%	45%	4%	3%	40%	10%	1%	1%

ANGUS GS

CED	BW	WW	YW	SC	Doc	HP	CEM	Milk	CW	Marb	RE	Fat
92	100	1	1	60	3	12	2	70	1	49	3	2

Consigner: DHT Angus Cecil Huff 417-250-1300

Acclaim A23 has a 104 Weaning Weight EPD, 189 Yearling has a 76 pound birth weight, 10 EPD's in top 1% of Angus breed. Out of a first calf heifer going back to Byergo Titus who had a 1013 weaning weight. On top side he goes back to Acclaim who has 7451 genomic progeny. He is top bull in sale for these EPD's Top 1% for WW

**DHT TITUS 412 ACCLAIM A23****8 E-LEE MAYFLOWER ARTILLERY**

Bull DOB: 08/23/21 Tattoo: 1807 Reg: 20188140

WAR Cavalry B063 Z044

Wilks Regiment 9035

Vintage Chloe 6137

V A R Discovery 2240

E-Lee Mayflower Azalea 803

E-Lee Flower 4268 83

BW	76
ADJ	773
WW	

CED	BW	WW	YW	RADG	SC	HP	CEM	Milk
5	2.9	90	161	0.31	2.07	14.3	10	33
65%	85%	2%	1%	10%	3%	3%	30%	10%
Doc	CW	Marb	RE	Fat	\$M	\$W	\$B	\$C
20	87	1.22	0.94	0.009	61	82	218	344
45%	1%	5%	10%	45%	60%	3%	1%	1%

ANGUS GS

CED	BW	WW	YW	SC	Doc	HP	CEM	Milk	CW	Marb	RE	Fat
70	83	2	2	1	34	23	30	16	1	4	10	56

Consigner: E-Lee Angus Don Ely 417-830-7530

Artillery - The ONLY Regiment son in the breed (out of 432) with at least +90 WW, +2.06 SC, and \$341 \$C. He also boasts 18 EPD's/\$Values in the TOP 15% of the breed for multi-trait excellence. His dam E-Lee Mayflower Azalea 803 is the TOP Donor at E-Lee Angus, with 13 of her EPD's being TOP 5% or better. Artillery is deep and long like his beautifully balanced Dam. He is ready to win, at producing the most profitable offspring.

**E-LEE MAYFLOWER ARTILLERY****9 DHT REVELATION MAGIC SAM A54**

Bull DOB: 08/24/21 Tattoo: A54 Reg: 20172419

Quaker Hill Rampage 0A36

V A R Revelation 6299

Sandpoint Blackbird 8809

Byergo Black Magic 3348

DHT Magic Granite200 Sis 476

DHT Blk Granite 785 Gin 200

BW	76
ADJ	637
WW	
ADJ	1083
YW	
FRAME	6.5

CED	BW	WW	YW	RADG	SC	HP	CEM	Milk
6	3.6	92	160	0.34	1.75	12.1	9	35
55%	95%	1%	2%	2%	10%	50%	45%	10%
Doc	CW	Marb	RE	Fat	\$M	\$W	\$B	\$C
19	72	1.07	1.21	-0.028	57	82	198	314
50%	5%	10%	1%	10%	70%	3%	2%	3%

ANGUS GS

CED	BW	WW	YW	SC	Doc	HP	CEM	Milk	CW	Marb	RE	Fat
73	94	6	8	10	30	31	70	11	21	14	5	16

Consigner: DHT Angus Cecil Huff 417-250-1300

Magic Sam A54 ranks top 1% for WW and dairy value and top 2% YW and RADG. Sam has amazing balance with 19 EPD's in top 10% and 14 EPD's in top 5% of Angus breed. 5 of 6 \$Value Carcass value of 1.22 RE and 1.07 Marb and +73 CW with negative FAT. Sam qualifies as Angus seed stock. He excels in \$Value with 5 of 6 in top 5% or higher.

**BYERGO BLACK MAGIC 3348
MGS OF LOT 9 & 11****V A R REVELATION 6299
SIRE OF LOT 9 & 11**

BULLS

10 E-LEE MAYFLOWER HEDGE FUND

Bull	DOB: 08/24/21	Tattoo: 1808	Reg: 20180241
<i>Basin Payweight 1682</i> Deer Valley Growth Fund <i>Deer Valley Rita 36113</i> <i>V A R Discovery 2240</i> E-Lee Mayflower Azalea 803 <i>E-Lee Flower 4268 83</i>			
	BW	74	
	ADJ		
	WW	727	
	ADJ		
	YW	1098	
	FRAME	6.5	

CED	BW	WW	YW	RADG	SC	HP	CEM	Milk
3	4.1	105	179	0.33	1.71	13.4	8	26
80%	95%	1%	1%	4%	10%	35%	55%	50%
Doc	CW	Marb	RE	Fat	\$M	\$W	\$B	\$C
31	85	0.86	0.71	0.024	71	85	186	312
4%	1%	25%	35%	70%	30%	2%	4%	3%

ANGUS GS

CED	BW	WW	YW	SC	Doc	HP	CEM	Milk	CW	Marb	RE	Fat
64	89	1	4	14	1	25	11	75	3	13	45	69

Consigner: E-Lee Angus Don Ely 417-830-7530

Hedge Fund - the ONLY Growth Fund son in the breed with at least +105 WW, +.86 Marb, and \$312 \$C. He has thirteen EPDs/\$Values in the TOP 15%. His dam E-Lee Mayflower Azalea 803 is the TOP Donor at E-Lee Angus, with 13 of her EPDs being TOP 5% or better. He embodies many of the traits of his beautifully balanced Dam. Hedge Fund will sire offspring that will provide you with great financial security!



E-LEE MAYFLOWER HEDGE FUND

11 DHT REV 6299 MASTER A56

Bull	DOB: 08/27/21	Tattoo: A56	Reg: 20237290
<i>Quaker Hill Rampage 0A36</i> V A R Revelation 6299 <i>Sandpoint Blackbird 8809</i> <i>Byergo Black Magic 3348</i> DHT Magic Granite200 Sis 476 <i>DHT Blk Granite 785 Gin 200</i>			
	BW	80	
	ADJ		
	WW	613	
	ADJ		
	YW	1104	
	FRAME	6.5	

CED	BW	WW	YW	RADG	SC	HP	CEM	Milk
11	1.5	80	148	0.36	1.13	11.8	10	30
15%	60%	10%	4%	1%	35%	55%	30%	25%
Doc	CW	Marb	RE	Fat	\$M	\$W	\$B	\$C
17	61	0.97	1.13	-0.063	61	75	188	305
55%	20%	15%	2%	1%	60%	10%	4%	4%

ANGUS GS

CED	BW	WW	YW	SC	Doc	HP	CEM	Milk	CW	Marb	RE	Fat
44	65	14	5	50	31	58	77	44	25	26	7	1

Consigner: DHT Angus Cecil Huff 417-250-1300

Master A56 ranks top 4% or higher YW, RADG, RE, negative Fat, \$C, \$B, and \$G. Master is Angus seed stock qualified. Top 10% WW at +80 and top 1% for RADG. Master is well balanced with 10 EPD's in top 10% and 17 EPD's in top 15% or higher of Angus breed. 5 of 6 \$Value Carcass value of 1.13 RE and +.98 Marb and +61 CW with negative FAT of -.062. Sam qualifies as Angus seed stock. He excels in \$Value with 5 of 6 in top 15% or higher.



E-LEE MAYFLOWER AZALEA 803
DAM OF LOT 8 & 10

Online Bidding Available
www.LiveWireAuction.com



12 WRR MAGNITUDE 156

Bull	DOB: 09/06/21	Tattoo: 156	Reg: 20358117
<i>K C F Bennett Southside</i> Mead Magnitude <i>Mead Primrose N198</i> <i>WRR Trueblood 468</i> WRR Triumphant Lady 825 <i>WRR Triumphant Lady 526</i>			
	BW	57	
	ADJ		
	WW	724	
	ADJ		
	YW	1150	
	FRAME	6.8	

CED	BW	WW	YW	RADG	SC	HP	CEM	Milk
7	1.9	83	144	0.27	0.73	11.9	9	42
45%	65%	5%	10%	30%	60%	55%	45%	1%
Doc	CW	Marb	RE	Fat	\$M	\$W	\$B	\$C
24	56	0.73	0.76	-0.045	78	91	151	274
25%	30%	35%	30%	2%	15%	1%	30%	20%

ANGUS GS

CED	BW	WW	YW	SC	Doc	HP	CEM	Milk	CW	Marb	RE	Fat
50	56	2	12	56	13	61	40	1	14	26	35	13

Consigner: Wiles Ridge Ranch Truman Wiles 417-252-0726

POWERFUL, GROWTHY MAGNITUDE SON. Big-Time growth EPDs; Top 5% WW EPD, and a Top 10% YW EPD. Note the TOP 1% Milk EPD of 42. If you need to add milk to your cow herd this is the bull for you. He does all this and is a Show-Me-Select qualified with a +7 CED. Excellent carcass genomics, as his TEND genomic is TOP 3%. His dam is a productive cow with a 360 day calving interval. You will like his balance, ease of movement, and docility.



WRR MAGNITUDE 156

BULLS

13 WRR ENHANCE 165

Bull DOB: 09/10/21 Tattoo: 165 Reg: 20358188		BW	53
SydGen Exceed 3223		ADJ	713
SydGen Enhance		WW	
SydGen Rita 2618		ADJ	1209
KB-Full Measure C40		YW	
WRR Forever Lassie 946		FRAME	7.1
WRR Forever Lassie 579			

CED	BW	WW	YW	RADG	SC	HP	CEM	Milk
7	0.8	69	132	0.32	1.68	14.2	12	37
45%	40%	30%	15%	5%	10%	30%	15%	3%
Doc	CW	Marb	RE	Fat	\$M	\$W	\$B	\$C
21	52	1.12	0.71	-0.031	69	73	178	300
40%	40%	10%	35%	10%	35%	15%	10%	5%

ANGUS GS

CED	BW	WW	YW	SC	Doc	HP	CEM	Milk	CW	Marb	RE	Fat
45	25	71	39	9	49	29	9	18	64	9	45	17

Consigner: Wiles Ridge Ranch Truman Wiles 417-252-0726
VERY COMPLETE PACKAGE ENHANCE SON. 165 has a TOP of the line EPD profile with a Top 10% \$BEEF and a Top 5% \$COMBINED INDEX of 300 \$C. He is Show-Me-Select qualified with a +7 CED. 165 has a Top 30% WW EPD and a TOP 15% YW EPD. He has a TOP 3% Milk EPD of 37. His Marb EPD of 1.12 puts him in the top 10% of the breed. He has excellent body length, good frame at a 7.1 frame, with very good ease of movement. There is only one other bull in the breed that can match his combination of BW, WW, YW, RADG, SC, HP, CEM, MARB, and MILK EPDs. He is from the most productive cow family in our herd, his 15 year old pathfinder great-grandam is raising her 13th natural calf with a 381 day calving interval. She has accomplished this with being flushed two times and producing nine other embryo calves for a total production of 22 calves.



WRR ENHANCE 165



WRR FOREVER LASSIE 938
FLUSH SISTER TO DAM OF LOT 13

14 MAHANS CLANCY J31

Bull DOB: 09/20/21 Tattoo: J31 Reg: 20243125		BW	75
Silveiras Conversion 8064			
BUBS Southern Charm AA31			
Hickory Hill Erica 009			
G A R 5050 Data Manager 0536			
Spruce Mtn Rita 5519			
Monarch Rita 1106			

CED	BW	WW	YW	RADG	SC	HP	CEM	Milk
8	1.5	64	115	0.26	1.25	15.5	12	38
35%	60%	40%	40%	40%	30%	20%	15%	2%
Doc	CW	Marb	RE	Fat	\$M	\$W	\$B	\$C
18	45	0.92	0.95	-0.003	85	74	156	287
55%	55%	20%	10%	30%	5%	10%	25%	10%

ANGUS GS

CED	BW	WW	YW	SC	Doc	HP	CEM	Milk	CW	Marb	RE	Fat
18	18	45	36	27	54	9	17	6	44	27	20	39

Consigner: Flying W Farms Kyle Wake 417-252-1399
This bull by Southern Charm will add frame in a balanced calving ease package. He carries 15 epds in the top 25% and is backed by the great Spruce Mountain Rita cow family. Don't miss this bull on sale day as he will add value to your herd in every part of the industry.



BUBS SOUTHERN CHARM AA31SIRE OF
LOT 14



MONARCH RITA 1106
MGD OF LOT 14

15 SYDGEN RESOLVE 1955

Bull DOB: 09/24/21 Tattoo: 1955 Reg: 20156438		BW	74
SydGen Multi Tool 2432		ADJ	
SydGen Resolve 7132		WW	680
SydGen Dixie Erica 5104		ADJ	1115
SydGen Atlas 1043		YW	
SydGen Forever Lady 6550		FRAME	6.1
SydGen Forever Lady 2741			

CED	BW	WW	YW	RADG	SC	HP	CEM	Milk
6	1.4	65	125	0.33	0.44	15.7	8	42
55%	55%	40%	25%	4%	80%	15%	55%	1%
Doc	CW	Marb	RE	Fat	\$M	\$W	\$B	\$C
24	56	0.74	1.07	-0.006	57	70	167	274
25%	30%	35%	4%	25%	70%	15%	15%	20%

ANGUS GS

CED	BW	WW	YW	SC	Doc	HP	CEM	Milk	CW	Marb	RE	Fat
83	86	27	5	56	27	13	83	1	11	31	2	29

Consigner: Allegro Angus Craig Stephenson 417-894-4285
SydGen Resolve 1955 is a low birth weight bull (74 lbs) with way above average growth numbers in his genomic scores. He has single digit YW, YH, & Milk; as well as RE & Tend in his carcass traits. His Dam qualified as a Pathfinder Dam in the SydGen, program and has had 4 progeny with WW ratio of 107 and 3 YW ratio at 103. He should breed an exciting calf crop with size and growth!



SYDGEN RESOLVE 1955

BULLS

16 CHECKERHILL TRUE NORTH 149

Bull DOB: 09/26/21 Tattoo: 149 Reg: 20308219

BW 72

S A V Rainfall 6846
Square B True North 8052
Elbanna of Conanga 1209
EF Rampage 6095
Smith Valley Elba 9193
SVA Elba X

CED	BW	WW	YW	RADG	SC	HP	CEM	Milk
13	-0.2	72	125	0.27	1.33	18.5	13	24
10%	20%	20%	25%	30%	25%	3%	10%	65%
Doc	CW	Marb	RE	Fat	\$M	\$W	\$B	\$C
21	33	0.79	0.44	0.001	97	73	125	259
40%	85%	30%	80%	35%	1%	15%	70%	30%

ANGUS GS

CED	BW	WW	YW	SC	Doc	HP	CEM	Milk	CW	Marb	RE	Fat
6	10	35	46	28	45	3	25	62	73	28	76	47

Consigner: Flying W Farms Kyle Wake 417-252-1399
This bull has arguably the neatest pedigree in the sale today stacking sires like: True North, Rampage, TenX and cow families including: Vintage Blackcap and Smith Valley Elba. This young calving ease bull has plenty of power and middle on a sound hoof with all the phenotype anyone could ask for. He has 14 epds in the top 25% of the breed including: calving ease, Heifer pregnancy, Milk, Foot scores and a hair shedding epd in the top 3%. This young herd bull prospect is sure to turn heads.

17 BMA GAVEL 148

Bull DOB: 10/19/21 Tattoo: 148 Reg: 20353412

Baldridge Colonel C251
SydGen KCF Gavel 8361
K C F Miss Fortress B398
SydGen Blacksmith 4010
BMA Idessa 640
B MA Idessa 320

BW 74

ADJ 724

ADJ 1293

YW 1293

FRAME 7.1

CED	BW	WW	YW	RADG	SC	HP	CEM	Milk
7	2.4	78	139	0.32	0.33	11.2	13	30
45%	80%	10%	10%	5%	85%	60%	10%	25%
Doc	CW	Marb	RE	Fat	\$M	\$W	\$B	\$C
22	79	1.08	1.23	-0.033	73	73	217	354
35%	2%	10%	1%	5%	25%	15%	1%	1%

ANGUS GS

CED	BW	WW	YW	SC	Doc	HP	CEM	Milk	CW	Marb	RE	Fat
43	72	24	27	79	35	54	7	40	5	9	4	19

Consigner: Blue Mound Angus Sheldon Swartzentruber 417-327-5885
BMA Gavel 148 is sired by SydGen KCF Gavel, the \$240,000 valuation sire at SydGen. The Top \$C Bull of his calf crop at 354 \$C. His dam is one of my favorite cows for looks, she is a "Model Angus Cow". 148 has an excellent phenotype as well, and his TOP 15% Claw and TOP 5% Angle EPDs. Show-Me-Select calving ease, with TOP 1% \$B, \$C, and RE.



SQUARE B TRUE NORTH 8052
SIRE OF LOT 16



SYDGEN KCF GAVEL 8361
SIRE OF LOT 17

SPRING PAIRS

30 4N MEDICINE WOMAN 520

Cow DOB: 11/15/15 Tattoo: 520 Reg: 18403155

Connealy Consensus 7229
EXAR Consensus 9663B
EXAR Saras Dream 9566
EXAR Durango 0566B
Miss Edsl 1221
Lafllins Sunset 4264

CED	BW	WW	YW	RADG	SC	HP	CEM	Milk
6	1.6	64	111	1*0.23	1*0.41	1*10	9	26
50%	55%	25%	25%	57%	71%	45%	40%	50%
Doc	CW	Marb	RE	Fat	\$M	\$W	\$B	\$C
1*11	1*38	1*0.56	1*0.52	1*-0.013	66	57	1*136	1*236
77%	57%	45%	52%	25%	30%	35%	42%	42%

Consigner: 4N Farms Justin Nelson 417-926-2603

520 has been a very good cow for us and is doing a tremendous job with her bull calf by 4N Colonel Clint 810 (Colonel X 10X). Note that 520's sire was bred by Express Ranch and hails from the same cow family that has produced many top females and AI bulls as Colburn Primmo and EXAR Lutton 1831. 520's bull calf at side is off to a good start and will add value to anyone's herd. Bred Back to 4N King Rito 924 (King's Crown X SS Objective).

30A 4N COLONEL CLINT - CALF

Bull DOB: 3/1/22 Tattoo: Reg: Pending

Sire: 4N Colonel Clint 810



4N MEDICINE WOMAN 520



CONNEALY CONSENSUS 7299
PGS OF LOT 30

All buyers invited to view the
sale animals morning of sale
day

Join us for donuts & coffee sale
day morning

Juniors sign up for
\$100 drawing

SPRING PAIRS

31 VALLEY VIEW MARY 743

Cow DOB: 01/01/17 Tattoo: 743 Reg: 18963263

Sitz Top Game 561X
JMB Traction 292
JMB Emulota 013
Connealy Impression
Valley View Eline 243
Valley View Eline 243

BW	71
ADJ	699
WW	
ADJ	829
YW	

CED	BW	WW	YW	RADG	SC	HP	CEM	Milk
2	1.7	68	120	0.25	0.47	8.1	9	37
80%	60%	15%	15%	30%	75%	90%	40%	3%
Doc	CW	Marb	RE	Fat	\$M	\$W	\$B	\$C
4	54	0.66	0.86	-0.039	54	75	154	254
95%	15%	30%	10%	3%	65%	3%	15%	20%

ANGUS GS

CED	BW	WW	YW	SC	Doc	HP	CEM	Milk	CW	Marb	RE	Fat
64	52	52	48	88	94	81	39	16	23	47	24	7

Consigner: Valley View Angus Farm Lynn McElhaney 417-732-7588
Mary 743 is has been a very productive JMB Traction daughter for Valley View. She has produced 4 calves in a 367 day calving interval. She consistently weans one of the best calves at the farm, note her 108 weaning ratio. Be sure to circle her top 15% WW & YW EPDS. With a TOP 3% \$W & 108 WW Ratio this female is a proved pound producer! Safe to Valley View Niagara 9165 (Reg # 19585524) due 1/8/223



VALLEY VIEW NIAGARA 9165
SERVICE SIRE FOR LOT 31

31A VALLEY VIEW MARY 243

Cow DOB: 01/01/22 Tattoo: 243 Reg: 20393257

G A R Sure Fire
G A R Dual Threat
G A R Daybreak A3010
JMB Traction 292
Valley View Mary 743
Valley View Eline 243

BW	70
ADJ	583
WW	

CED	BW	WW	YW	RADG	SC	HP	CEM	Milk
11	-1.1	59	117	0.26	0.79	13.7	9	38
15%	10%	55%	35%	40%	55%	30%	40%	2%
Doc	CW	Marb	RE	Fat	\$M	\$W	\$B	\$C
12	54	0.98	0.95	-0.018	61	67	176	289
80%	35%	15%	10%	15%	55%	20%	10%	10%

ANGUS GS

CED	BW	WW	YW	SC	Doc	HP	CEM	Milk	CW	Marb	RE	Fat
13	6	92	45	62	72	28	78	10	57	15	19	22

Consigner: Valley View Angus Farm Lynn McElhaney 417-732-7588
Mary 243 is true spread female, in an extremely thick package. The mating between 743 and Dual Threat has proven to be a real winner! Note her +11 TOP 15% CED that explodes into a +117 YW. She is a +.98 on Marb and +.95 RE. Be sure to circle her excellent \$B and \$C numbers both TOP 10%. This is front pasture female with loads of potential!



VALLEY VIEW MARY 243

32 4N ENVIOUS BLACKBIRD 712

Cow DOB: 09/16/17 Tattoo: 712 Reg: 19045084

Dameron First Class
Colburn Primo 5153
Silveiras Saras Dream 1339
EXAR Denver 2002B
EXAR Envious Blackbird 4917
EXAR Envious Blackbird 0703

BW	69
----	----

CED	BW	WW	YW	RADG	SC	HP	CEM	Milk
6	3.1	55	89	0.2	-0.3	7.4	6	15
55%	90%	70%	80%	85%	95%	95%	75%	95%
Doc	CW	Marb	RE	Fat	\$M	\$W	\$B	\$C
3	23	0.51	0.43	0.031	24	36	107	163
95%	95%	65%	80%	80%	95%	95%	90%	95%

Consigner: Sinning Cattle Company Chris & Amber Sinning 417-849-6417
Here is a Colburn Primo daughter out of an Express Ranch cow that we bought from Roger Nelson. Our daughter Emily showed her at various fairs. She is a very easy keeping female. EXAR Envious Blackbird 0703, has raised many stylish females for Express Ranch, and is a direct daughter of the Reserve Champion female at the National Western Stock Show in Denver, RR Envious Blackbird 1920. She sells with a Sitz Barricade 632F bull calf. Pasture exposed to Sinning's Emerald H83 from June 28th 2022 to Sept 28th 2022.



COLBURN PRIMO 5153 SIRE OF LOT 32

32A SINNING'S BARRICADE - CALF

Bull DOB: 3/10/22 Tattoo: Reg: Pending

Sire: Sitz Barricade 632F

BW	75
----	----



SITZ BARRICADE 632 F
SIRE OF LOT 32A

33 VALLEY VIEW LADY 8389 SPRING PAIRS

Cow DOB: 12/17/17 Tattoo: 8389 Reg: 19292296

Connealy Consensus
K C F Bennett Fortress
Thomas Patricia 9705

G A R Sunrise
Valley View Lady 6389
Valley View Lady 389

BW	67
ADJ	674
WW	
ADJ	752
YW	

CED	BW	WW	YW	RADG	SC	HP	CEM	Milk
5	2.3	75	116	0.25	0.43	5.8	5	26
55%	75%	5%	20%	30%	75%	95%	80%	50%
Doc	CW	Marb	RE	Fat	\$M	\$W	\$B	\$C
-7	37	0.83	0.73	-0.041	53	77	139	233
95%	50%	15%	20%	2%	70%	2%	30%	40%

ANGUS GS

CED	BW	WW	YW	SC	Doc	HP	CEM	Milk	CW	Marb	RE	Fat
78	70	36	76	64	99	93	94	48	85	27	48	8

Consigner: Valley View Angus Farm Lynn McElhaney 417-732-7588
Lady 8389 is a broody Fortress daughter, that has produced many females that are being retained in Valley View Farms. She is an extremely efficient cow note her .25 RADG, top 30% and .31 DMI that genomized TOP 8%. She has a very strong carcass and weaning weight EPDS, note her TOP 15% MAR, TOP 20% RE and TOP 2% FAT. She is a TOP 5% WW EPD, and TOP 2% \$W. She has done an excellent job raising an extremely fancy Wilks Regiment daughter. Safe to Ferguson Trailblazer 239E (Reg # 18996007) due 12/20/22



K C F BENNETT FORTRESS
SIRE OF LOT 33

33A VALLEY VIEW LADY 289

Cow DOB: 01/03/22 Tattoo: 289 Reg: 20393406

WAR Cavalry B063 Z044
Wilks Regiment 9035
Vintage Chloe 6137

K C F Bennett Fortress
Valley View Lady 8389
Valley View Lady 6389

BW	65
ADJ	
WW	542

CED	BW	WW	YW	RADG	SC	HP	CEM	Milk
10	2	81	141	0.29	0.86	11.8	8	30
20%	70%	10%	10%	20%	50%	55%	55%	20%
Doc	CW	Marb	RE	Fat	\$M	\$W	\$B	\$C
8	57	1	0.82	-0.026	58	79	171	280
90%	30%	15%	25%	10%	65%	4%	15%	15%

ANGUS GS

CED	BW	WW	YW	SC	Doc	HP	CEM	Milk	CW	Marb	RE	Fat
33	70	8	13	31	84	59	84	26	26	19	12	15

Consigner: Valley View Angus Farm Lynn McElhaney 417-732-7588
Here is a gorgeous Wilks Regiment daughter that has loads of potential! She hits all the marks on EPDs, with an extremely fancy phenotype. Check out the spread on this girl, +10 CED, +81 WW, +141 YW, +29 RADG, +30 Milk, she does everything right. She also boasts great carcass and \$Indexes, +1 on Marb, +280\$C, and TOP 4% +79 \$W. Take her home and flush or show her at the PGS, either way this female has it all!



WILKS REGIMENT 9035 SIRE OF LOT 33A
& SERVICE SIRE FOR LOT 34

34 AF MISS GLENDA B6 1618

Cow DOB: 09/12/18 Tattoo: 1618 Reg: 19333371

Connealy Consensus 7229
Connealy Black Granite
Eura Elga of Conanga 9109

R B Tour Of Duty 177
A F Miss Glenda's T D 2815
A F Glenda's New Day 160

BW	71
ADJ	
WW	665

CED	BW	WW	YW	RADG	SC	HP	CEM	Milk
14	-0.8	49	87	0.22	1.1	18.5	11	28
3%	10%	70%	70%	55%	25%	2%	20%	35%
Doc	CW	Marb	RE	Fat	\$M	\$W	\$B	\$C
22	40	0.1	0.52	-0.012	83	54	118	236
20%	45%	95%	45%	20%	4%	45%	65%	35%

HD50K

CED	BW	WW	YW	SC	Doc	HP	CEM	Milk	CW	Marb	RE	Fat
3	3	88	89	29	34	2	84	45	64	96	50	16

Consigner: Asher Farms Tom & Tracey Asher 417-257-3220
1618's mother 2815 is one of our foundation cows. We have 2 daughters out of 2815 in our herd and 1618's first daughter is in our herd as well. 1618 is due to calve 2/28/23 to Wilks Regiment, this pair the potential to be a real foundation for someone! 422 was born 3/22/22 with an actual birth weight of only 65lbs. She is out of one Mark Satterfields' fancy Treasure son. She has the potential to make a real cow prospect.



AF MISS GLENDA B6 1618 &
AF MISS GLENDA 422



AF MISS GLENDA 422

34A AF MISS GLENDA 422 - CALF

Cow DOB: 3/22/22 Tattoo: Reg: Pending

Sire: S A T Treasure 9206

BW	65
----	----



S A T TREASURE 9206
SIRE OF LOT 34A

35 GUFFEY'S BLACKCAP 234 FALL PAIRS

Cow DOB: 01/31/20 Tattoo: 234 Reg: 19952003

Hoover Dam
S S Niagara Z29
Jet S S X144

Thomas Up River 1614
Guffey's Blackcap
CSC Blackcap 5103 Y95

CED	BW	WW	YW	RADG	SC	HP	CEM	Milk
14	-1.7	43	83	0.16	1.23	9.7	14	39
3%	5%	95%	90%	95%	30%	75%	4%	1%
Doc	CW	Marb	RE	Fat	\$M	\$W	\$B	\$C
14	37	1.02	0.35	0.027	60	59	144	247
70%	75%	15%	90%	75%	60%	40%	40%	45%

ANGUS GS

CED	BW	WW	YW	SC	Doc	HP	CEM	Milk	CW	Marb	RE	Fat
4	5	97	87	24	73	65	43	5	77	11	84	63

Consigner: Guffey Farm Stacy & Stephanie Guffey 417-372-2903
Coming in the top 5% or better on her CED, BW, CEM, and Milk, Guffey's Blackcap 234 maintains an equally strong phenotype and a gentle disposition. She has 7 pathfinder sires in her epd profile as well as a beautiful udder and is good footed. She had a Conneally Black Granite heifer calf on 8/31 with an actual birthweight of 69 lbs.



GUFFEY'S BLACKCAP 234

35A GUFFEY'S BLACKCAP - CALF

Cow DOB: 8/31/22 Tattoo: Reg: Pending

Sire: Conneally Black Granite

BW	69
----	----



CONNELLY BLACK GRANITE
SIRE OF LOT 35A

BRED COWS

36 4N 10X BLACKCAP 611

Cow DOB: 5/20/16 Tattoo: 611 Reg: 18616756

Mytty In Focus
A A R Ten X 7008 S A
A A R Lady Kelton 5551

Summitcrest Complete 1P55
4N SC Blackcap 301A
Daltons Blackcap 9293

CED	BW	WW	YW	RADG	SC	HP	CEM	Milk
3	2.3	58	110	1+.30	1+.82	1+.11.8	10	26
75%	75%	40%	30%	5%	45%	50%	30%	50%
Doc	CW	Marb	RE	Fat	\$M	\$W	\$B	\$C
1+.20	1+.44	1+.91	1+.67	1+.001	45	47	160	253
30%	35%	15%	25%	35%	85%	65%	10%	20%

Consigner: 4N Farms Justin Nelson 417-926-2603
611 is an easy fleshing and powerful daughter of Ten X. 611 traces back to a cow that we purchased from Dalton's on the Sycamore and her daughter was the very first calf registered at 4N Farms. 611 is an all around good cow, easy going cow, she does her job well and breeds right back. Due this fall to 4N Colonel Clint 810.



4N 10X BLACKCAP 611

37 SEAGRAVES RITA 2044

Cow DOB: 9/12/20 Tattoo: 2044 Reg: 20017185

V A R Discovery 2240
44 Bragging Rights 4372
44 Ruby 2357

Quaker Hill Rampage 0A36
Seagraves Rita 7016
Seagraves Rita 3313

CED	BW	WW	YW	RADG	SC	HP	CEM	Milk
11	0.5	83	140	0.29	1.18	16.6	12	19
15%	35%	4%	10%	20%	30%	10%	15%	95%
Doc	CW	Marb	RE	Fat	\$M	\$W	\$B	\$C
19	65	1.09	1.35	-0.036	71	73	193	321
45%	15%	10%	1%	5%	30%	10%	3%	2%

ANGUS GS

CED	BW	WW	YW	SC	Doc	HP	CEM	Milk	CW	Marb	RE	Fat
40	59	9	23	20	35	12	55	88	13	13	1	4

Consigner: Seagraves Angus Kevin Devore 618-339-0665
2044 is the kind of angus female that makes you turn around and look again! 44 Bragging Rights is a breed leader for putting depth, capacity and docility in is daughters, and this female picturesque of his daughters. Look at the spread and abundant TOP rankings on this female. +11 CED, +83 WW, +.29 RADG, +1.09 Marb, +1.35 RE. She has 20 EPDs TOP 25% or better, and has 8 EPDs TOP 5% or better. Note the TOP 1% \$AxH & AxJ, +193 \$B and 321 \$C. An ideal donor female with +16.6 TOP 10% HP. She is due 11/1 to LAR Man in Black (+9 CED +96 WW +170 YW +1.09 Marb 333\$C). Mark your book and really study this female, she will be a breed changer!
All Seagraves Angus Females Calf Hood Vaccinated for national travel

12 The Power Performance Pedigree Sale



SEAGRAVES RITA 2044



LAR MAN IN BLACK
SERVICE SIRE FOR LOT 37

38A SEAGRAVES RUBY 2074

BRED COWS

Cow DOB: 9/27/20 Tattoo: 2074 Reg: 20023302

SydGen Exceed 3223

SydGen Enhance

SydGen Rita 2618

44 Trending 4413

44 Ruby 6567

44 Ruby 2357

BW	62
ADJ	491
WW	

CED	BW	WW	YW	RADG	SC	HP	CEM	Milk
5	1.7	74	136	0.28	1.26	16.1	9	19
60%	60%	15%	10%	25%	25%	15%	40%	95%
Doc	CW	Marb	RE	Fat	\$M	\$W	\$B	\$C
28	65	1.08	0.92	-0.009	74	60	190	321
10%	15%	10%	15%	25%	20%	35%	3%	2%

ANGUS GS

CED	BW	WW	YW	SC	Doc	HP	CEM	Milk	CW	Marb	RE	Fat
52	37	41	31	28	18	10	17	82	22	11	14	21

Consigner: Seagraves Angus Kevin Devore 618-339-0665

Seagraves Ruby 2074 and Seagraves Ruby 2071 are flush sisters out of the 44 Ruby 6567. 6567 is an excellent producer at Seagraves Angus, her flush resulted in 23 embryos and 16 pregnancies. 2074 is an ideal angus female and really highlights the Seagraves program. Note her carcass panel, TOP 15% CW, TOP 10% Marb, TOP 15% RE. A docile (+28 TOP 10%) female with loads of growth and efficiency +74 WW, +136 YW, and +28 RADG. The \$Values on 2074 are across the board amazing TOP 4% \$AxH, TOP 5% \$AxJ, TOP 5% \$G, TOP 3% \$B, and +320 TOP 2% \$C. She is due 12/25 to HPCA Veracious, who has a +1.71 Marb and \$390\$C. Grab a calculator and do a little math on this mating - potential Marbling of +1.4 and 355\$C on the calf. 2071 and her sister 2074 that have donor written all over them, these females are ready to take Angus genetics to the next level!

All Seagraves Angus Females Calf Hood Vaccinated for national travel

38B SEAGRAVES RUBY 2071

Cow DOB: 2/16/21 Tattoo: 2071 Reg: 20071504

SydGen Exceed 3223

SydGen Enhance

SydGen Rita 2618

44 Trending 4413

44 Ruby 6567

44 Ruby 2357

BW	72
ADJ	664
WW	
ADJ	874
YW	

CED	BW	WW	YW	RADG	SC	HP	CEM	Milk
7	2.6	84	153	0.29	2.06	13.2	9	24
45%	80%	4%	3%	20%	3%	35%	40%	65%
Doc	CW	Marb	RE	Fat	\$M	\$W	\$B	\$C
32	65	1.06	0.61	0.012	66	70	178	297
3%	15%	15%	55%	50%	45%	15%	10%	10%

ANGUS GS

CED	BW	WW	YW	SC	Doc	HP	CEM	Milk	CW	Marb	RE	Fat
74	93	9	4	3	4	42	27	71	17	11	54	60

Consigner: Seagraves Angus Kevin Devore 618-339-0665

2071 is a super spread female! Note her Show-Me-Select +7 CED with massive growth numbers, +84 WW TOP 4% and +153 YW TOP 3%. +32 DOC TOP 3%, +65 CW & +1.06 Marb, both Top 15% this female is going to raise, those kind of animals grid well and come up to the trough! If docility, growth, and carcass traits are your goal, she's got it. Note the fertility she will pass on to her offspring +2.06 SC Top #% and +13.2 HP. \$W, \$F, \$G, \$B, and \$C all TOP 10%! She is due 3/10/23 to Virginia Tech Statesman (+7 CED, +89 WW, +169 YW, +33 RADG, +1.22 Marb, +206 \$B, +349 \$C). This should be a really nice mating, and one of the first Statesman calves on the ground. This lot can produce your next herd sire, or two donor females, either way it's a sure bet!

All Seagraves Angus Females Calf Hood Vaccinated for national travel



SEAGRAVES RUBY 2074



SEAGRAVES RUBY 2071



44 RUBY 6567
DAM OF LOTS 38A & 38B

Ring Side
Phone Bidding Available

Brett Sayre
573-881-1876

Scott Crawford
816-804-1410

-OR-

Online Bidding Available
www.LiveWireAuction.com



44 RUBY 2357

The dam of 44 Ruby 6567, 44 Ruby 2357 was the matriarch of the 44 Farms program, she is the record-selling \$500,000 female produced in the 44 Farms program that went on to be a foundation for High Roller Angus. 44 Ruby 2357 has a list of accolades that will impress any Angus-man. Maternal sisters to 2357 include the \$420,000 Ruby 4399 who is a donor at Double GG Farms & 44 Farms. 2357 is the Dam of the calving-ease and carcass specialist 44 Bragging Rights 4372, who is at Select Sires. The 2357 and her sisters have created over 1.1 million in sales and are in donor programs or AI sires at 44 Farms, Blackstone Cattle Company, High Roller Angus, Bornemann Angus, Twelve Stones Ranch, Crazy K Ranch, Express Ranch, Edisto Pines Farm, Spruce Mountain Ranch, Seagraves Angus, Dovetail Homestead, Circle S Land and Cattle, and Select Sires.

BRED COWS

39 BMA PRINCESS 063

Cow DOB: 12/19/20 Tattoo: 63 Reg: 20133806

Baldridge Colonel C251
SydGen KCF Gavel 8361
K C F Miss Fortress B398

SydGen Exceed 3223
BMA Princess 762
B M A Princess 270

BW	74
ADJ	609
WW	
ADJ	881
YW	

CED	BW	WW	YW	RADG	SC	HP	CEM	Milk
6	1.9	83	157	0.35	2.32	14	7	38
55%	65%	4%	2%	2%	1%	30%	65%	2%
Doc	CW	Marb	RE	Fat	\$M	\$W	\$B	\$C
29	81	0.91	0.78	-0.003	66	80	200	326
10%	2%	20%	30%	30%	45%	3%	2%	2%

ANGUS GS

CED	BW	WW	YW	SC	Doc	HP	CEM	Milk	CW	Marb	RE	Fat
31	52	11	2	1	2	12	69	6	2	27	20	51

Consigner: Blue Mound Angus Fred Swartzentruber 417-327-3752
BMA Princess 063 is sired by SydGen KCF Gavel, the \$240,000 valuation sire at SydGen. This heifer's ratio was 105 at weaning and 108 at yearling. Right out of the Blue Mound Angus "Keeper Pen" the only reason she is in the sale is because Blue Mound wanted to bring "A Good One." Top 2% +200 \$B and Top 2% +326 \$C. Bred on 3/7/22 to De-Su Volunteer B122 and will be examined safe to calve 12/14/22. De-Su Volunteer is the sire of the \$25,000 Ruby Rose Pair that Sold at the Power Sale Spring 2022 to SydGen. Note the +83 WW TOP 4%, +157 YW Top 2% and +81 CW Top 2% on this Princess female. De-Su Volunteer is +16 CED, +84 WW, +153 YW, +80 CW, +1.64 Marb, +233 \$B, and 368 \$C. This is an excellent mating and opportunity to own an extremely powerful pair!



BMA RUBY ROSE 158

PATERNAL SISTER TO MATING OF LOT 39

OPEN HEIFERS

40 FWF FOREVER LASSIE 103

Cow DOB: 8/20/21 Tattoo: 103 Reg: 20250327

Basin Payweight 1682
B/R MVP 5247
B/R Blossom 3254

V A R Legend 5019
Fwf Henrietta Pride 802
WRR Forever Lassie 454

BW	62
ADJ	674
WW	

CED	BW	WW	YW	RADG	SC	HP	CEM	Milk
3	2.4	70	123	0.27	1.35	15.2	12	18
80%	75%	25%	25%	35%	20%	20%	15%	95%
Doc	CW	Marb	RE	Fat	\$M	\$W	\$B	\$C
11	38	0.74	0.47	0.005	50	53	137	228
80%	75%	40%	75%	45%	85%	55%	50%	65%

ANGUS GS

CED	BW	WW	YW	SC	Doc	HP	CEM	Milk	CW	Marb	RE	Fat
78	70	24	34	17	69	15	7	93	59	41	59	40

Consigner: Flying W Farms Kyle Wake 417-252-1399
This heifer by MVP has all the power and middle you could ever want. She comes from a very productive cow line as her dam has taken AI every year and carries a 377 day calving interval while weaning over half her body weight. Her granddam is the definition of an angus female and carries a 355 day interval breeding first time AI every year and has an IMF ratio of 116. She will be heading to the FWF donor pen this fall.



DE-SU VOLUNTEER B122

SERVICE SIRE FOR LOT 39

41 FWF LADY PRIDE 101

Cow DOB: 8/31/21 Tattoo: 101 Reg: 20332161

LD Capitalist 316
Musgrave 316 Exclusive
Musgrave Prim Lassie 163-386

WRR Trueblood 468
Fwf Lady Pride 801
WRR Lady Pride 621

BW	58
ADJ	714
WW	

CED	BW	WW	YW	RADG	SC	HP	CEM	Milk
8	-0.6	64	111	0.23	0.05	14.9	13	26
35%	15%	40%	45%	65%	95%	20%	10%	50%
Doc	CW	Marb	RE	Fat	\$M	\$W	\$B	\$C
10	44	0.79	0.82	0.029	81	69	146	270
85%	60%	35%	25%	75%	10%	15%	40%	20%

ANGUS GS

CED	BW	WW	YW	SC	Doc	HP	CEM	Milk	CW	Marb	RE	Fat
58	30	54	64	94	84	17	4	59	66	31	22	75

Consigner: Flying W Farms Kyle Wake 417-252-1399
This powerful heifer by the semen sales leader at ST Genetics is one you won't want to miss. Her dam carries a 366 day calving interval, has a birth ratio of 99 on 3 calves and has weaned on average 66% of her body weight each year.



B/R MVP 5247 SIRE OF LOT 40



WRR TRUEBLOOD 468

PGS OF LOT 41 & 12

OPEN HEIFERS

42 BMA ERICA 129

Cow DOB: 9/12/21 Tattoo: 129 Reg: 20353431

Baldrige Colonel C251
SydGen KCF Gavel 8361
K C F Miss Fortress B398

SydGen Exceed 3223
BMA Erica 620
B M A Erica 430

BW	65
ADJ	502
WW	
ADJ	876
YW	

CED	BW	WW	YW	RADG	SC	HP	CEM	Milk
12	1.1	79	148	0.33	0.79	10.3	10	30
10%	50%	10%	4%	4%	55%	70%	30%	20%
Doc	CW	Marb	RE	Fat	\$M	\$W	\$B	\$C
24	69	1.43	0.68	-0.01	64	73	206	331
25%	10%	2%	40%	25%	50%	10%	1%	1%

ANGUS GS

CED	BW	WW	YW	SC	Doc	HP	CEM	Milk	CW	Marb	RE	Fat
29	72	10	2	36	22	54	65	37	5	2	36	25

Consigner: Blue Mound Angus Fred Swartzentruber 417-327-3752
BMA Erica 129 is sired by SydGen KCF Gavel, the \$240,000 valuation sire at SydGen. Top 1% +206 for \$B and Top 1% +331 for \$C. Her Dam is sired by exceed and considered one of the best animals at the Blue Mound Angus Program. Of the EPD's required for this sale she is 1 of only 2 non-parent cows in the entire angus breed that have this level of excellence. Be sure to look over this female as she is donor potential, with 15 of her EPDs being TOP 10% or better.



SYDGEN KCF GAVEL 8361
SIRE OF LOT 42 & 43

43 BMA RITA 132

Cow DOB: 9/16/21 Tattoo: 132 Reg: 20353430

Baldrige Colonel C251
SydGen KCF Gavel 8361
K C F Miss Fortress B398

SydGen Straight Up 8998
BMA Rita 562
B M A Rita 410

BW	67
ADJ	583
WW	
ADJ	949
YW	

CED	BW	WW	YW	RADG	SC	HP	CEM	Milk
2	3.6	84	163	0.39	1.41	12.9	11	38
85%	95%	4%	1%	1%	20%	40%	20%	2%
Doc	CW	Marb	RE	Fat	\$M	\$W	\$B	\$C
20	81	1.48	0.55	-0.015	47	71	220	333
40%	2%	1%	60%	20%	90%	15%	1%	1%

ANGUS GS

CED	BW	WW	YW	SC	Doc	HP	CEM	Milk	CW	Marb	RE	Fat
90	96	5	1	9	33	44	16	7	3	1	64	41

Consigner: Blue Mound Angus Fred Swartzentruber 417-327-3752
BMA Rita 132 is sired by SydGen KCF Gavel, the \$240,000 valuation sire at SydGen. Top 1% +220 \$B, and Top 1% +333 for \$C. Blue Mound Angus has used 100% AI Sires and no clean up bulls for the last 18 years. BMA Rita 562, is an excellent producer with a very nice udder. Be sure to circle her +1.48 Marb TOP 1% EPD and Genomic Rank, as well as +163 TOP 1% YW EPD and Genomic Rank. 132 is extremely sound and has excellent Claw TOP 15% and Angle Top 10% scores. 132 really hits all the marks, and is primed to go into your donor pen.



SYDGEN EXCEED 3223
MGS OF LOT 42



SYDGEN STRAIGHT UP 8998
MGS OF LOT 43

44 FWF LADY PRIDE 106

Cow DOB: 9/24/21 Tattoo: 106 Reg: 20346578

LD Capitalist 316
Musgrave 316 Exclusive
Musgrave Prim Lassie 163-386

QHF WWA Black Onyx 5Q11
FWF Lady Pride 902
WRR Lady Pride 621

BW	54
ADJ	738
WW	

CED	BW	WW	YW	RADG	SC	HP	CEM	Milk
9	-0.6	80	136	0.27	0.17	12.9	11	34
30%	15%	10%	10%	35%	90%	40%	20%	10%
Doc	CW	Marb	RE	Fat	\$M	\$W	\$B	\$C
21	61	0.86	0.58	0.029	75	88	161	284
40%	20%	25%	60%	75%	20%	1%	20%	15%

ANGUS GS

CED	BW	WW	YW	SC	Doc	HP	CEM	Milk	CW	Marb	RE	Fat
84	82	5	12	84	22	18	29	15	9	27	55	64

Consigner: Flying W Farms Kyle Wake 417-252-1399
This young female is one of the most unique females we have seen in a while. With a popular pedigree blending the semen sales leader at ST Genetics and Black Granite. Not to mention she has an extremely balanced set of EPDs that boast 15 EPDs in the top 25% of the breed including all value indexes. She is a 3/4 sister to the 101 heifer in this sale; her dam is extremely productive with a 323 day calving interval and a neat udder.



QHF WWA BLACK ONYX 5Q11
MGS OF LOT 44



MUSGRAVE 316 EXCLUSIVE
SIRE OF LOT 41 & 44

45

SINNING'S QUEEN LASS J9 OPEN HEIFERS

Cow

DOB: 10/11/21

Tattoo: J9

Reg: 20347119

Dameron First Class

BW

71

GCC Money Earned 852E ET

Duff W 373 DixieErica 8137

Connealy Namesake 10X

Sinning's Queen Lass D84

Sinning's Queen Lass A26

CED	BW	WW	YW	RADG	SC	HP	CEM	Milk
8	1.2	66	103	0.2	0.55	17.6	11	19
35%	50%	35%	60%	85%	70%	5%	20%	95%
Doc	CW	Marb	RE	Fat	\$M	\$W	\$B	\$C
15	33	0.43	0.52	-0.01	74	58	115	223
65%	85%	70%	65%	25%	20%	40%	80%	70%

Consigner: Sinning Cattle Company Chris & Amber Sinning 417-849-6417

This is one of Addy's show heifers this year. She is a really stout made wide based GCC Money Earned 852E daughter. She has a sweet disposition and can be shown again next year. She is a good show heifer and will make a great cow. Her sister won her class at Junior Nationals in 2020 and her brother was Reserve Intermediate Champion last year at State Fair. Take a look at her on sale day!!



SINNING'S QUEEN LASS J9



DAMERON FIRST CLASS
PGS OF LOT 45

46

FWF FOREVER LASSIE 028

Cow

DOB: 10/16/21

Tattoo: 28

Reg: 20406978

Jindra Acclaim

BW

52

Fwf Acclaim 028

WRR Forever Lassie 668

WR Journey-1X74

WRR Forever Lassie 668

WRR Forever Lassie 161

CED	BW	WW	YW	RADG	SC	HP	CEM	Milk
6	0.6	62	105	0.26	0.59	12	11	21
55%	35%	45%	55%	40%	70%	5%	20%	85%
Doc	CW	Marb	RE	Fat	\$M	\$W	\$B	\$C
20	35	1.02	0.43	-0.01	68	56	152	265
40%	80%	15%	80%	25%	35%	50%	30%	25%

CED	BW	WW	YW	SC	Doc	HP	CEM	Milk	CW	Marb	RE	Fat
91	88	16	41	70	51	56	38	80	38	13	62	31

Consigner: Flying W Farms Kyle Wake 417-252-1399

This moderate framed heifer has 10 epds in the top 35% of the breed. Her dam is carrying a 365 day calving interval, a 101 weaning ratio and a 101 yearling ratio. She has also weaned her calves off at almost 60% of her body weight on average. I look for this heifer to follow in her mothers footsteps. This heifer also carries a neat pedigree going back to traveler, 036 twice, Destination 727 twice and the great B/R Ruby cow family twice.



FWF ACCLAIM 028 SIRE OF LOT 46

47

DHT MAG GRANITE ROSE A73

Cow

DOB: 10/29/21

Tattoo: A73

Reg: 20236588

Mead Magnitude

BW

70

DHT Mag 168 Banker 506

DHT 747 Rampage Queen 168

DHT 803 Black Granite Ease

DHT Ease 987 Roses 503

DHT 604 Ten653 Rosie 987

CED	BW	WW	YW	RADG	SC	HP	CEM	Milk
10	1.4	83	154	0.31	1.61	19.3	14	33
20%	55%	4%	2%	10%	10%	2%	4%	10%
Doc	CW	Marb	RE	Fat	\$M	\$W	\$B	\$C
22	75	0.63	0.87	-0.017	65	79	173	289
35%	4%	50%	20%	15%	45%	4%	10%	10%

CED	BW	WW	YW	SC	Doc	HP	CEM	Milk	CW	Marb	RE	Fat
36	71	3	1	13	28	3	5	15	1	62	15	16

Consigner: DHT Angus Cecil Huff 417-250-1300

Rose has good balance with 16 EPD's in top 10% or higher. 5 of 6 EPD's for maternal at top 10% or higher. Rose excels in \$Value with all 6 above breed average with \$W at top 4%. Rose goes back to Mead Magnitude one of the top sire groups at S A V 2021 sale .



MEAD PRIMROSE N198
PGDS OF LOT 47 & 48

48

DHT 506 MAID 454 A75

OPEN HEIFERS

Cow

DOB: 10/30/21

Tattoo: A75

Reg: 20271542

Mead Magnitude

DHT Mag 168 Banker 506

DHT 747 Rampage Queen 168

DHT 803 Black Granite Ease

DHT Granite 183 Ramp 195 454

DHT Rampage 902 Maid 195

BW	72
ADJ	607
WW	
ADJ	802
YW	

CED	BW	WW	YW	RADG	SC	HP	CEM	Milk
14	0.6	72	125	0.25	1.02	12.2	17	34
3%	35%	20%	20%	50%	40%	5%	1%	10%
Doc	CW	Marb	RE	Fat	\$M	\$W	\$B	\$C
35	56	0.51	0.86	0.009	88	80	148	280
1%	30%	65%	20%	50%	3%	3%	35%	15%

ANGUS GS

CED	BW	WW	YW	SC	Doc	HP	CEM	Milk	CW	Marb	RE	Fat
8	38	44	70	47	1	54	3	6	45	51	32	62

Consigner: DHT Angus Cecil Huff 417-250-1300
 Maid 454 A75 ranks top 1% for DOC, top 3% for CED, CEM, \$M and \$W. Top 20% or higher for Milk, \$F, RE, Angus on Dairy, \$C, WW and YW. Maid 454 A75 goes back Black Granite on bottom side. Mead Magnitude on of the top side. Magnitude sired one of the top sire group at SAV sale.



WALLACE BLACKBIRD 9164

DAM OF LOT 49

49

VLF BIRDIE 01K

Cow

DOB: 1/1/22

Tattoo: 01K

Reg: 20347951

S S Niagara Z29

S S Brickyard

Lucy S S C109

Stevenson Turning Point

Wallace Blackbird 9164

Wallace Blackbird 204

BW	55
ADJ	
WW	
ADJ	
YW	

CED	BW	WW	YW	RADG	SC	HP	CEM	Milk
15	-3.6	59	101	0.2	0.23	12.8	7	35
2%	1%	55%	65%	85%	85%	40%	65%	5%
Doc	CW	Marb	RE	Fat	\$M	\$W	\$B	\$C
16	40	0.91	0.89	0.024	70	73	145	258
60%	70%	20%	15%	70%	30%	10%	40%	30%

ANGUS GS

CED	BW	WW	YW	SC	Doc	HP	CEM	Milk	CW	Marb	RE	Fat
3	2	63	59	70	38	34	98	9	62	11	14	62

Consigner: Vestlane Farms Ed Vest 417-399-1430
 Birdie is a really fancy deep bodied, thick made show heifer prospect out of SS Brickyard and an awesome 2 year old Stevenson Turning Point daughter we bought from Wallace Cattle Company. Granddam is still producing strong at 10 years of age. With a great EPD profile and a showy look, it's hard to go wrong by purchasing females like this!



VLF BIRDIE 01K

50

VLF BRITTANY 03K

Cow

DOB: 1/4/22

Tattoo: 03K

Reg: 20347950

S S Niagara Z29

S S Brickyard

Lucy S S C109

Panther Cr Incredible 6704

GV-K3J Ireene 008

G V Brandy C 254

BW	60
ADJ	
WW	
ADJ	
YW	

CED	BW	WW	YW	RADG	SC	HP	CEM	Milk
6	0.9	70	128	0.29	1.47	8.6	11	30
55%	45%	25%	20%	20%	15%	85%	20%	20%
Doc	CW	Marb	RE	Fat	\$M	\$W	\$B	\$C
24	57	0.69	0.68	0.027	60	70	156	262
25%	30%	45%	40%	75%	60%	15%	25%	30%

ANGUS GS

CED	BW	WW	YW	SC	Doc	HP	CEM	Milk	CW	Marb	RE	Fat
39	28	48	35	14	12	72	23	27	47	37	30	68

Consigner: Vestlane Farms Ed Vest 417-399-1430
 Brittany is a big volumed, elegant designed heifer that's hard to fault. Dam is a beautiful 2 year old daughter of the highly sought after Panther Creek Incredible. Her pedigree and EPD profile, along with her dam's picture perfect udder should make her an asset to your herd for many years after her show career is over.



VLF BRITTANY 03K



GV-K3J IREENE 008

DAM OF LOT 50

OPEN HEIFERS

51 4N RITA 202

Cow DOB: 2/16/22 Tattoo: 202 Reg: 20421794

V A R Discovery 2240

WRR Discovery 609

WRR Lady Princess 3005

WR Journey-1X74

EXAR Rita 7735

Deer Valley Rita 9266

CED	BW	WW	YW	RADG	SC	HP	CEM	Milk
I*7 45%	I*9 45%	I*60 50%	I*103 60%	I*.22 75%	I*.60 70%	I*13.4 35%	I*6 75%	I*26 50%
Doc	CW	Marb	RE	Fat	\$M	\$W	\$B	\$C
I*18 50%	I*36 80%	I*.83 30%	I*.63 50%	I-.001 35%	58 65%	58 40%	141 45%	241 50%

Consigner: 4N Farms Justin Nelson 417-926-2603

Rita 202 is a very gentle and slicked haired daughter of our her sire WRR Discovery 609, which is owned with Truman Wiles. 202's Dam came to us through the Express Ranches Embryo Program, in which her GranDam was used heavily. Her 3rd dam is the \$300,000 GAR Objective 2345 who is the dam of such AI sires as Deer Valley All In, Deer Valley Patriot, and GAR Progress. Rita 202 is easy on the eyes and might work well in the Pheno-Geno Show.



WRR DISCOVERY 609
SIRE OF LOT 51

52 GPN QUEEN 2N5

Cow DOB: 3/20/22 Tattoo: 2N5 Reg: 20407280

Basin Payweight 1682

Deer Valley Growth Fund

Deer Valley Rita 36113

V A R Discovery 2240

GPN Queen 7N11

G P N Queen 3N2

CED	BW	WW	YW	RADG	SC	HP	CEM	Milk
I*8 35%	I*1.2 50%	I*72 20%	I*134 15%	I*0.31 10%	I*1.07 35%	I*11.9 47%	I*13 10%	I*26 50%
Doc	CW	Marb	RE	Fat	\$M	\$W	\$B	\$C
I*18 47%	I*59 26%	I*0.54 47%	I*0.57 47.5%	I*0.021 60%	63 50%	60 35%	I*151 22%	I*258 25%

Consigner: Naylor's Angus Brett Naylor 417-880-6873

Stylish, deep ribbed and sound show heifer prospect sired by Growth Fund. Hard to find a better pedigree than this female's. We have retained her dam, 7N11's first two females back into the herd so we are offering one of our best with this lot. She has a great, and balanced EPD profile to go along with her excellent look. Will be broke to tie by sale day.



4N RITA 202

EMBRYOS

60 E-LEE MAYFLOWER AZALEA 803

Embryo DOB: 2/25/18 Tattoo: 803 Reg: 19091954

A A R Ten X 7008 S A

V A R Discovery 2240

Deer Valley Rita 0308

B/R Future Direction 4268

E-Lee Flower 4268 83

E-Lee 9126 Mayflower 52

CED	BW	WW	YW	RADG	SC	HP	CEM	Milk
4 65%	3.9 95%	88 1%	147 2%	0.28 10%	2.22 1%	18.1 2%	7 65%	28 35%
Doc	CW	Marb	RE	Fat	\$M	\$W	\$B	\$C
28 5%	67 3%	1.18 3%	0.52 45%	-0.007 25%	72 20%	75 3%	183 2%	309 2%

ANGUS GS

CED	BW	WW	YW	SC	Doc	HP	CEM	Milk	CW	Marb	RE	Fat
71	92	8	31	2	5	3	34	52	19	5	79	35

Consigner: E-Lee Angus Don Ely 417-830-7530

Offering 3 embryos sired by Deer Valley Growth Fund(Reg #18827828) or EXAR Grenade (Reg #19358194). Growth fund is the only bull in the breed at his accuracy level of CED (+10 @ .86 acc) and WW (+90 @ .95 acc), and will be full sibs to the Hedge Fund bull offered in this sale. Exar Grenade sired the \$100,000 valued top bred heifer at the recent Express Ranch Sale. Grenade has an impress set of EPDs; +98 WW, and has 18 EPDs/\$Values in the top 15%. Either mating will provide "Top of the Breed" offspring both in phenotype and genotype. Guaranteeing 1 if implanted by a certified embryologist. Bring your tank and pick them up sale day or shipping available at buyers expense.



GPN QUEEN 2N5



GPN QUEEN 7N11
DAM OF LOT 52

EMBRYOS



E-LEE MAYFLOWER AZALEA 803
DONOR FOR LOT 60



EXAR GRENADE 9152B
SIRE OF LOT 60

LOT 60 X EXAR GRENADE 9152B									
	CED	BW	WW	YW	Milk	CW	Marb	\$W	\$C
DAM	4 65%	3.9 95%	88 1%	147 2%	28 35%	67 3%	1.18 3%	75 3%	309 2%
SIRE	6 55%	1.8 65%	99 1%	170 1%	31 20%	82 1%	0.69 35%	93 1%	330 1%

LOT 60 X DEER VALLEY GROWTH FUND									
	CED	BW	WW	YW	Milk	CW	Marb	\$W	\$C
DAM	4 65%	3.9 95%	88 1%	147 2%	28 35%	67 3%	1.18 3%	75 3%	309 2%
SIRE	10 25%	1.3 55%	91 1%	170 1%	30 25%	80 2%	0.31 75%	91 1%	275 3%



DEER VALLEY GROWTH FUND
SIRE OF LOT 60

61 25 CUSTOM ENGRAVED TAGS

Contributed: KW Custom Engraving Kyle Wake 417-252-1399

TAGS



62 GENEX 10 STRAWS OF ANY \$30 PRICED SEMEN

10 Semen

Contributed: Genex Rep Tammy Wallace 417-592-0145

SEMEN



S S BRICKYARD

63 KENNY ROGERS

10 Semen DOB: 1/9/21 Tattoo: Reg: 20092065

Baldridge Colonel C251
SydGen KCF Gavel 8361
K C F Miss Fortress B398

Hoover Dam
Foxhovens Kintry Annie 532
Foxhovens Kintry Annie 315

CED	BW	WW	YW	RADG	SC	HP	CEM	Milk
7 45%	2.5 80%	101 1%	176 1%	0.37 1%	0.6 70%	11.4 60%	11 25%	33 10%
Doc	CW	Marb	RE	Fat	\$M	\$W	\$B	\$C
27 15%	90 1%	1.24 4%	1.22 1%	-0.061 1%	67 40%	91 1%	227 1%	361 1%

Contributed: ST Genetics Rep Kyle Wake 417-252-1399



KENNY ROGERS

64 S A V BLOODLINE 9578

10 Semen DOB: 12/29/18 Tattoo: Reg: 19542324

Coleman Charlo 0256

S A V Rainfall 6846

S A V Blackcap May 4136

S A V 707 Rito 9969

S A V Emblynette 2369

S A V Emblynette 7566

CED	BW	WW	YW	RADG	SC	HP	CEM	Milk
-2	4.3	78	146	0.32	0.69	6.9	7	18
95%	95%	10%	5%	5%	60%	95%	65%	90%
Doc	CW	Marb	RE	Fat	\$M	\$W	\$B	\$C
18	62	0.51	0.38	-0.033	28	48	151	224
45%	15%	50%	75%	10%	95%	70%	30%	60%

Contributed: Schaff Angus Valley Kelly Schaff 701-445-7465

**S A V BLOODLINE 9578****65 S A V EARLY ARRIVAL 0903**

10 Semen DOB: 1/3/20 Tattoo: Reg: 19851701

Connealy Capitalist 028

LD Capitalist 316

LD Dixie Erica 2053

S A V Final Answer 0035

S A V Blackcap May 3525

S A V May 2397

CED	BW	WW	YW	RADG	SC	HP	CEM	Milk
15	-2.4	71	113	0.21	1.17	10	13	30
2%	3%	25%	45%	80%	30%	75%	10%	25%
Doc	CW	Marb	RE	Fat	\$M	\$W	\$B	\$C
19	40	0.26	0.61	0.062	70	81	102	202
50%	70%	85%	50%	95%	35%	3%	90%	85%

Contributed: Schaff Angus Valley Kelly Schaff 701-445-7465

**S A V EARLY ARRIVAL 0903****66 TAR DOMINANCE 0031**

10 Semen DOB: 4/3/20 Tattoo: Reg: 19719061

Quaker Hill Manning 4EX9

E W A Peyton 642

E W A 444 of 968 Progress

Connealy In Sure 8524

2 Bar Insure 5155

2 Bar Prediction 2080

CED	BW	WW	YW	RADG	SC	HP	CEM	Milk
8	2.6	93	164	0.34	1.38	13.4	9	29
35%	80%	1%	1%	2%	20%	35%	45%	30%
Doc	CW	Marb	RE	Fat	\$M	\$W	\$B	\$C
30	84	1.5	1.04	-0.004	77	84	230	375
5%	1%	1%	5%	30%	15%	2%	1%	1%

Contributed: ABS Rep Shane Roark 417-259-2332

**TAR DOMINANCE 0031****67 VIRGINIA TECH STATESMAN**

5 Semen DOB: 1/16/21 Tattoo: Reg: 20085208

S S Niagara Z29

Tehama Patriarch F028

Tehama Elite Blackbird D826

Ellingson Homestead 6030

Vpi 310A Rita 9G6 Et

AED Rita 310A

CED	BW	WW	YW	RADG	SC	HP	CEM	Milk
8	0.1	89	169	0.33	0.83	17.4	13	27
35%	25%	2%	1%	4%	55%	10%	10%	45%
Doc	CW	Marb	RE	Fat	\$M	\$W	\$B	\$C
23	77	1.22	0.86	0.061	83	81	204	348
30%	3%	5%	20%	95%	10%	3%	1%	1%

Contributed: Select Sires Rep Brad Cromer 417-689-2119

**VIRGINIA TECH STATESMAN
& SERVICE SIRE FOR LOT 38B**

68

HAF PINNACLE 2026

10 Semen DOB: 11/12/20 Tattoo: Reg: 19904828

Quaker Hill Manning 4EX9

E W A Peyton 642

E W A 444 of 968 Progress

G A R Prophet

Bridges Prophet 665

Bridges Weigh Up 459

CED	BW	WW	YW	RADG	SC	HP	CEM	Milk
13	0.5	91	165	0.3	0.37	16.7	11	42
10%	35%	1%	1%	15%	80%	10%	25%	1%
Doc	CW	Marb	RE	Fat	\$M	\$W	\$B	\$C
21	88	1.28	0.69	0.045	79	97	207	347
40%	1%	3%	40%	90%	15%	1%	1%	1%

Contributed: Summit Genetics Don Ely 417-830-7530



HAF PINNACLE 2026

Wiles Ridge Ranch
 REGISTERED ANGUS
 BULLS FEMALES
 WILLOW SPRINGS, MO
Private Treaty Sales
 TRUMAN WILES 417-252-0726
www.WilesRidgeRanch.com

BEAU'S BLACK ANGUS
 Registered Angus Bulls & Females
Private Treaty Sales
BEAU & KAREN DAVIS
 417-880-6863 Strafford, MO

Simon's Tall Pines
 Private Treaty Sales
 Registered Angus
 Larry & Drew Simon
 Willow Springs, MO 417-469-3352

Valley View Angus Farms
 PRIVATE TREATY SALES
 LYNN MCELHANY
 REPUBLIC, MO 417-569-6940

BLUE MOUND ANGUS
 REGISTERED ANGUS BULLS & FEMALES
 Performance & Genomic Enhanced EPDs
Private Treaty Sales
 Eldorado Springs, MO
 Fred Swartzentruber 417-327-3752
 Sheldon Swartzentruber 417-327-5885

Kyle Wake
 417-252-1399
 Custom Tags
 Signs
 Endless Options of Personalized Engraving
 Kyle Wake
 CUSTOM ENGRAVING

We Finance Land

..... and just about everything to go with it.

By keeping our loans local,
we're in the business
of making dreams a reality.



BTC BANK
Community Minded...Just Like You

Member
FDIC

www.btcbank.bank

1505 South Ash St., Buffalo | 417-345-2113

Kropf Feeds



**365
CATTLE
MINERAL**

**BUY 10 GET 1 FREE
WHILE SUPPLIES LAST!**

**19 Prairie Lane
Buffalo, MO 65622**

417-733-2501

www.KropfFeeds.com


Hostetler
BUILDINGS
417.345.7418

**BUILDING YOUR
DREAMS**



**WE KNOW
AG BANKING.**

AS A PREMIER AG BANK, WE ARE UNIQUELY SUITED
TO SUPPORT OUR THRIVING AG COMMUNITY
AND CONTRIBUTE TO YOUR SUCCESS.



417.869.9000 | OLDMISSOURIBANK.COM

MEMBER FDIC

JUNIORS AND 4H/FFA YOUTH

There will be a drawing before the sale for multiple \$100 junior discounts to be used on the purchase of any female during the sale.



Top AI Sires &

**CONKLIN
DEALER**



**Don Ely
Hartville, Mo
417-830-7530**

www.summitgenetics.us

HIRSCH

FEED & FARM
SUPPLY INC.

**RENTAL • PARTS • SERVICE
FEED • FENCE • EQUIPMENT**
789 WORLEY DRIVE • WEST PLAINS, MO
hirschfeed.com • (417) 256-3749



LS
Tractor

Mahindra

Bobcat

RM

ARIAT

PANHANDLE

KRONE

Wrangler

**NOBLE
OUTFITTERS**

YETI



OPEN 7AM - 7PM MONDAY - SATURDAY



**Animal
Nutrition**

**Pasture
Care**

**Lawn &
Garden**

**Farm & Home
Supplies**

417-256-3911

Welcome to Cattle Country!

Your cattle's health and nutrition
is our number one priority.

We have the experience, knowledge
and products that deliver results.

Richard Brothers is here for your cattle operation!

114 W. 2nd Street
West Plains, MO 65775

Monday - Friday 7:30 AM - 5:00 PM
Saturday 7:30 AM - 12:00 PM

Thank You to All the Bidders & Buyers
at the Spring 2022 Sale

Thank you
**SYDENSTRICKER
GENETICS**

for Purchasing the
Top Selling Lot

LOT 31 & 31A

BMA Ruby Rose 928

BMA Ruby Rose 158



St Genetics Sales Rep. Kyle Wake 417-252-1399

STgenetics™

30% OFF

On orders October
7th-8th Only through
Kyle Wake

Minimum order of 10 units maximum order of 30 units
Angus sires only excluding Breakthrough,
Rawhide, Magnum, Kenny Rogers



Bailey
CHEVROLET



JOHN BAILEY (888) 517-7321

720 E MAIN WILLOW SPRINGS, MO 65793



Index Of Consigners

4N Farms - Justin Nelson 417-926-2603	30, 30A, 36, 51
Allegro Angus - Craig Stephenson 417-894-4285	15
Asher Farms - Tom & Tracey Asher 417-257-3220	34
BARAngus Ranch - Rob Price 314-974-5263	1,4
Beau's Black Angus - Beau Davis 417-880-6863	2
Blue Mound Angus - Sheldon Swartzentruber 417-327-5885	17
Blue Mound Angus - Fred Swartzentruber 417-327-3752	39, 42, 43
DHT Angus - Cecil Huff 417-250-1300	7, 9, 11, 47, 48
E-Lee Angus - Don Ely 417-830-7530	8, 10, 60
Flying W Farms - Kyle Wake 417-252-1399	14, 16, 40, 41, 44, 46
Guffey Farm - Stacy & Stephanie Guffey 417-371-2886	35, 35A
Naylor's Angus - Brett Naylor 417-880-6873	52
Seagraves Angus - Kevin Devore 618-339-0665	37, 38A, 38B
Sinning Cattle Company - Chris & Amber Sinning 417-849-6417	5, 32, 32A, 45
Simon's Tall Pines Angus - Larry & Drew Simon 417-838-2521	3
Valley View Angus Farm - Lynn McElhaney 417-732-7588	31, 31A, 33, 33A
Vestlane Farms - Ed Vest 417-399-1430	49, 50
Wiles Ridge Ranch - Truman Wiles 417-252-0726	6, 12, 13



October 8, 2022

1 PM

Wright County

Livestock Auction

Mountain Grove, MO

Sale Location: 8915 Business 60, Mountain Grove, MO

The Best Angus Genetics in the Midwest



THE POWER OF PERFORMANCE PEDIGREES

SALE MANAGER

PHOEBE WILES

PO BOX 23

WILLOW SPRINGS, MO 65793