

# POWER

*PERFORMANCE PEDIGREE*

# SALE



**STANDOUT GENETICS  
MOUNTAIN GROVE, MO  
APRIL 13, 2024**



April 13th, 2024  
1 PM  
Wright County  
Livestock Auction  
Mountain Grove, MO

*Sale Location: 8915 Business 60, Mountain Grove, MO 65711*



**AUCTIONEER**  
Jerry Lehmann  
573-999-4759

**RINGMAN**  
Adam Conover  
816-676-8560  
American Angus Association

**RINGMAN**  
Jon Powers  
913-424-4231



**PICTURES, VIDEOS, & ONLINE  
BIDDING AVAILABLE**

**SPECIAL ASSIGNMENT**

Julie Conover    Drew Simon    James Hayes  
734-260-8635    417-838-2521    417-254-1699

Missouri Angus Association

Dear Cattlemen & Cattlewomen-

I am so excited to invite you to the Power Performance Pedigree Sale. An extraordinary set of consigners have brought you an elite set of performance tested and pedigreed animals. The animals in this sale must qualify for the sale through DNA and EPD's. Power & performance cattle bulls must have 8 and females 7 of the EPDs in the catalog TOP 50% or better, and show animals must be halter broke and able to lead. We feel this will give you the best set of animals available for purchase, and give you every bit of available information in your decision making progress.

Whether you plan to attend the sale in person, bid via phone or Internet, we are here for you! We have 4 experienced and knowledgeable sale representatives that are here to help. These individuals can evaluate lots or handle bids for you. Rest assured proxy bids, phone bids, and Internet bids are handled in a secure and confidential matter.

The set of bulls and females in this sale are some of the best animals available with many of them having EPDs that are TOP 1%. Many of our consigners have noted, they wanted to bring you something really special and that it is hard to want to part with such an excellent animal. There are many sale attractions throughout the catalog. Whatever we can do to help you please let us know. We want you, your family, and farm to be successful and safe.

Saturday April 13, 2024 will be a great day for Standout Angus Genetics so mark your calendar and be sure to join us!

Thank you-



Phoebe Wiles  
Sale Manager  
417-293-8002

**SALE DAY PHONES:  
SALE MANAGER AND RINGMEN**  
*Online Bidding*  
[www.LiveWireAuction.com](http://www.LiveWireAuction.com)

**JUNIORS & 4H/FFA YOUTH**

There will be a drawing before the sale for multiple \$100 junior discounts to be used on the purchase of any female during the sale. The raffle is limited to one use per junior per year.

*All buyers invited to view the sale animals morning of sale day.*

## Rules for the Spring 2024 Sale

This is The Power Performance Pedigree Sale held in Mountain Grove, MO. Commercial and purebred buyers will have individual performance data available, along with pedigree, to select prospective bulls and females.

A. The bulls eligible for the sale must be no older than 30 months at sale date.

B. The females eligible for the sale must be no older than 7 years at sale date.

C. All bulls nominated must be weighed at weaning (between 160 and 280 days of age.)

D. The bull's yearling weight must be taken (320 to 440 days). He must have a 365 day weight of 950 pounds or better.

E. Performance Bulls must rank in the 50th percentile or better for 8 of the following EPD traits: CED, BW, WW, YW, RADG, SC, HP, CEM, Milk, Doc, CW, Marb, RE, Fat, \$M, \$W, \$B, and \$C for non-parent bulls in the most recent sire evaluation.

F. Performance Females must rank in the 50th percentile or better for 7 of the following EPD traits: CED, BW, WW, YW, RADG, SC, HP, CEM, Milk, Doc, CW, Marb, RE, Fat, \$M, \$W, \$B, and \$C for non-parent cows or current dams based on age. "A" lots may qualify through their dam.

G. Show cattle may qualify as long as they are halter broke and able to lead.

H. All lots over 7 months of age should have DNA & a genomic profile applied for.

I. Age of dam adjustments will follow the breed associations guidelines.

J. All bulls must be semen tested and examined for breeding soundness by a veterinarian within 60 days of sale, using standard assay analysis of semen approved by the College of Veterinary Medicine, University of Missouri.

K. Scrotal circumference as taken by the producer's veterinarian during the breeding soundness exam will be reported sale day. Minimum circumference 33cm.

L. All animals will be at the sale location by 6:00 p.m. day prior to the sale.

M. Information not available at press time will be available sale day on supplemental sheets.

N. All cows that sell as bred and safe in calf must have a pregnancy examination within 30 days of sale and stated stage on health papers.

O. Consignors shall furnish an official health certificate issued within 30 days of sale date. All calves old enough to be split from dams will need a separate health paper.

P. Shipping & Handling Cost of Embryos and Semen is the buyers expense.

### TERMS AND CONDITIONS

TIME: Sale begins at 1:00 p.m. April 13, 2024.

BIDDING: A floor price will be \$2000 on bulls.

TERMS: The terms of the sale are cash. Bring your personal or local bank check.

DISPUTES: The auctioneer will settle any and all disputes as to bids by declaring all bids off and reselling the animal in question.

HANDLING: Each animal will be purchaser's risk as soon as sold, but will be cared for by the owner for a reasonable period until they are loaded, free of charge to the purchaser but at his risk of loss or injury. All animals are sold and will be paid prior to loading.

CERTIFICATES: A certificate of registry and transfer will be furnished for each animal sold by respective breeder.

BREEDING GUARANTEE: All animals of breeding age (15 months or older) at time of sale are guaranteed breeders. Animals are guaranteed breeders if properly cared for and not used within the herd until 15 months of age. Any bull which settles at least one third of the healthy cows he breeds will be considered a breeder. Any animal that has not proven itself a breeder within six months after the sale date, if in healthy condition, and meeting the health regulations of the State of Missouri, may be returned to the farm of the seller, at the buyer's expense. The seller reserves the privilege of trying for a period of six months, to prove the animal a breeder. Should an animal fail to prove a breeder in the specified time period, the seller will refund the purchase price which shall be considered as full settlement and satisfaction of all claims. All complaints regarding breeding difficulties must be reported in writing by the buyer to the seller within six months.

EMBRYO GUARANTEE: Embryo conception guarantee will be stated for each lot. Embryos are guaranteed if transferred by a licensed embryologist or Whitaker Embryo Transfer. Guarantee for establishment of 60-day pregnancy, failure of pregnancy must be verified by vet. Buyers of embryo packages that fail to establish the pregnancy rate will be given additional embryos from the seller from the same mating, or another of similar value. The transfers must take place within a year of the sale date, and seller must be notified within a reasonable period of time of the failure to produce a pregnancy. Shipping costs is the responsibility of buyer.

ANNOUNCEMENTS: Announcements from the auction box will take precedence over the printed matter in this catalog.

CONTRACT: The above terms and guarantee shall constitute a contract between the buyer and seller of each animal sold. All animals sell under the standard terms and conditions set forth by the American Angus Association.

SALE ORDER: The lots will sell in their respective classes, based on age, AHIR Data, EPDs, Genomics, and Phenotype. Catalog order is sale order.

HEALTH: Bulls have been vaccinated for five strains of Lepto within 60 days of the sale. Health certificates will be furnished. Non-virgin and bulls over 24 months in age will be tested for trich.

LIABILITY: All persons who attend the sale do so at their own risk, the sale committee, The Power Performance Pedigree Sale, Live Wire Auction LLC, and Wright County Livestock Auction assume no liability, legal, or otherwise.

**Expected Progeny Difference (EPD)**, is the prediction of how future progeny of each animal are expected to perform relative to the progeny of other animals listed in the database. EPDs are expressed in units of measure for the trait, plus or minus. Interim EPDs may appear on young animals when their performance has yet to be incorporated into the American Angus Association National Cattle Evaluation (NCE) procedures. This EPD will be preceded by an "I", and may or may not include the animal's own performance record for a particular trait, depending on its availability, appropriate contemporary grouping, or data edits needed for NCE.

**Accuracy (ACC)**, is the reliability that can be placed on the EPD. An accuracy of close to 1.0 indicates higher reliability. Accuracy is impacted by the number of progeny and ancestral records included in the analysis.

**Percentile Rank** - As the percentile moves toward 1, it indicates this animal is top X% of the Angus Breed

**Calving Ease Direct (CED)**, is expressed as a difference in percentage of unassisted births, with a higher value indicating greater calving ease in first-calf heifers. It predicts the average difference in ease with which a sire's calves will be born when he is bred to first-calf heifers.

**Birth Weight EPD (BW)**, expressed in pounds, is a predictor of a sire's ability to transmit birth weight to his progeny compared to that of other sires.

**Weaning Weight EPD (WW)**, expressed in pounds, is a predictor of a sire's ability to transmit weaning growth to his progeny compared to that of other sires.

**Yearling Weight EPD (YW)**, expressed in pounds, is a predictor of a sire's ability to transmit yearling growth to his progeny compared to that of other sires.

**Residual Average Daily Gain (RADG)**, expressed in pounds per day, is a predictor of a sire's genetic ability for postweaning gain in future progeny compared to that of other sires, given a constant amount of feed consumed.

**Scrotal Circumference EPD (SC)**, expressed in centimeters, is a predictor of the difference in transmitting ability for scrotal size compared to that of other sires.

**Heifer Pregnancy (HP)**, is a selection tool to increase the probability or chance of a sire's daughters becoming pregnant as first-calf heifers during a normal breeding season. A higher EPD is the more favorable direction and the EPD is reported in percentage units.

**Calving Ease Maternal (CEM)**, is expressed as a difference in percentage of unassisted births with a higher value indicating greater calving ease in first-calf daughters. It predicts the average ease with which a sire's daughters will calve as first-calf heifers when compared to daughters of other sires.

**Maternal Milk EPD (Milk)**, is a predictor of a sire's genetic merit for milk and mothering ability as expressed in his daughters compared to daughters of other sires. In other words, it is that part of a calf's weaning weight attributed to milk and mothering ability.

**Docility (Doc)**, is expressed as a difference in yearling cattle temperament, with a higher value indicating more favorable docility. It predicts the average difference of progeny from a sire in comparison with another sire's calves. In herds where temperament problems are not an issue, this expected difference would not be realized.

**Carcass Weight EPD (CW)**, expressed in pounds is a predictor of the differences in hot carcass weight of a sire's progeny compared to progeny of other sires.

**Marbling EPD (Marb)**, expressed as a fraction of the difference in USDA marbling score of a sire's progeny compared to progeny of other sires.

**Ribeye Area EPD (RE)**, expressed in square inches, is a predictor of the difference in ribeye area of a sire's progeny compared to progeny of other sires.

## More on EPD's

**Fat Thickness EPD (Fat)**, expressed in inches, is a predictor of the differences in external fat thickness at the 12th rib (as measured between the 12th and 13th ribs) of a sire's progeny compared to progeny of other sires.

**Maternal Weaned Calf Value (\$M)**, an index, expressed in dollars per head, predicts profitability differences from conception to weaning with the underlying breeding objective assuming that individuals retain their own replacement females within herd and sell the rest of the cull female and all male progeny as feeder calves. The model assumes commercial producers will replace 25% of their breeding females in the first generation and 20% of their breeding females in each subsequent generation. Traits included are as follows: calving ease direct, calving ease maternal, weaning weight, milk, heifer pregnancy, docility, mature cow weight, claw set and foot angle.

**Weaned Calf Value (\$W)**, an index, expressed in dollars per head, to predict profitability differences in progeny due to genetics from birth to weaning. The underlying objective being producers will retain 20% of the female progeny as replacements and sell the rest of the cull females and their male counterparts as feeder calves. Traits included are as follows (in no particular order): birth weight, weaning weight, milk, and mature cow weight.

**Beef Value (\$B)**, a terminal index, expressed in dollars per carcass, to predict profitability differences in progeny due to genetics for postweaning and carcass traits. This terminal index assumes commercial producers wean all male and female progeny, retain ownership of these animals through the feedlot phase and market these animals on a carcass grid. Traits included in the index are as follows: yearling weight, dry-matter intake, marbling, carcass weight, ribeye area and fat.

**Combined Value (\$C)**, an index, expressed in dollars per head, which includes all traits that make up both Maternal Weaned Calf Value (\$M) and Beef Value (\$B) with the objective that commercial producers will replace 20% of their breeding females per year with replacement heifers retained within their own herd. The remaining cull heifer and steer progeny are then assumed to be sent to the feedlot where the producers retain ownership of those cattle and sell them on a quality-based carcass merit grid. Expected progeny differences (EPDs) directly influencing a combined index: calving ease direct (CED) and maternal (CEM), weaning weight (WW), yearling weight (YW), maternal milk (Milk), heifer pregnancy (HP), docility (DOC), mature cow weight (MW), foot angle (Angle), claw set (Claw), dry matter intake (DMI), marbling (Marb), carcass weight (CW), ribeye area (RE) and fat thickness (Fat).

## Abbreviations

**(I\*) Interim EPDs** - Interim EPDs are EPDS that are calculate as a provisional or temporary EPDs. Interim with pedigree only- in this case only pedigree information is available, sometimes called a pedigree index, and past relatives EPDs are involved in calculating the interim EPD. While admittedly low in accuracy, an interim value gives you a snapshot of the animal's value as a parent, and, thus, it provides a temporary selection-decision tool.

### **Spring 2024 Breed Averages EPDs & \$Values**

|                  | CED | BW  | WW | YW  | RADG | SC   | Doc | HP   | CEM | Milk | CW | Marb | RE   | Fat   | \$M | \$W | \$B | \$C |
|------------------|-----|-----|----|-----|------|------|-----|------|-----|------|----|------|------|-------|-----|-----|-----|-----|
| Non-Parent Bulls | 6   | 1.2 | 63 | 112 | 0.26 | 0.87 | 18  | 12.1 | 8   | 27   | 50 | 0.69 | 0.54 | 0.013 | 63  | 59  | 144 | 250 |
| Current Dams     | 6   | 1.3 | 58 | 102 | 0.24 | 0.79 | 17  | 11.6 | 8   | 27   | 41 | 0.55 | 0.53 | 0.013 | 60  | 55  | 133 | 232 |
| Non-Parent Cows  | 6   | 1.2 | 63 | 111 | 0.26 | 0.85 | 18  | 11.9 | 9   | 27   | 51 | 0.73 | 0.68 | 0.011 | 63  | 58  | 146 | 251 |

# Elite Number Package Herd Sires

## OLDER BULLS

### 1 CANTRELL CREEK SALVATION 682

Bull DOB: 2/28/22 Tattoo: 682 Reg: 20344358

Baldrige Alternative E125

SG Salvation

MGR JP Rita 7037

Quaker Hill Rampage 0A36

Cantrell Creek Bardolena 468

Cantrell Creek Bardolena 402

|        |      |
|--------|------|
| BW     | 77   |
| ADJ WW | 773  |
| ADJ YW | 1251 |
| FRAME  | 5.5  |

| CED | BW   | WW   | YW   | RADG   | SC  | HP   | CEM | Milk |
|-----|------|------|------|--------|-----|------|-----|------|
| 15  | -1.1 | 78   | 133  | 0.33   | 0.1 | 10.8 | 17  | 20   |
| 3%  | 10%  | 15%  | 20%  | 10%    | 95% | 70%  | 1%  | 90%  |
| Doc | CW   | Marb | RE   | Fat    | \$M | \$W  | \$B | \$C  |
| 16  | 62   | 0.96 | 1.18 | -0.034 | 68  | 73   | 192 | 317  |
| 65% | 25%  | 25%  | 3%   | 10%    | 40% | 15%  | 10% | 10%  |

#### ANGUS GS

| CED | BW | WW | YW | SC | Doc | HP | CEM | Milk | CW | Marb | RE | Fat |
|-----|----|----|----|----|-----|----|-----|------|----|------|----|-----|
| 2   | 3  | 31 | 34 | 84 | 44  | 62 | 14  | 89   | 48 | 17   | 4  | 13  |

Consigner: Cantrell Creek Angus Travis Cantrell 417-872-5570  
Moderate framed bull out of the \$58,000 donor Cantrell Creek Bardolena 468, who has sold over \$300,000 in progeny sales. Built like a tank this bull has excellent, depth width, and phenomenal Calving Ease! Cantrell Creek Bardolena 672 was Ingram Angus's selection as a weaned heifer for \$8,000. Straight-out of the Cantrell Creek Embryo program this virgin bull is destined for greatness!



CANTRELL CREEK SALVATION 682  
LOT 1



DAM OF LOT 1  
CANTRELL CREEK BARDOLENA 468

## ELITE NUMBER PACKAGE BULLS

### 2 CANTRELL CREEK ULTRA MAG 696

Bull DOB: 9/9/22 Tattoo: C696 Reg: 20495320

G A R Momentum K836

SEO Ultra Provider

Chair Rock Progress 3023

G A R Reliant

WSC Erianna H819

Welytok Prophet Erianna 4B5

|        |      |
|--------|------|
| BW     | 70   |
| ADJ WW | 781  |
| ADJ YW | 1235 |
| FRAME  | 7.0  |

| CED | BW  | WW   | YW   | RADG   | SC  | HP   | CEM | Milk |
|-----|-----|------|------|--------|-----|------|-----|------|
| 7   | 1.3 | 84   | 152  | 0.32   | 0.8 | 12.8 | 14  | 36   |
| 45% | 55% | 10%  | 4%   | 10%    | 55% | 45%  | 10% | 5%   |
| Doc | CW  | Marb | RE   | Fat    | \$M | \$W  | \$B | \$C  |
| 29  | 79  | 1.93 | 0.86 | -0.008 | 60  | 80   | 243 | 375  |
| 10% | 4%  | 1%   | 25%  | 65%    | 5%  | 1%   | 1%  | 1%   |

#### ANGUS GS

| CED | BW | WW | YW | SC | Doc | HP | CEM | Milk | CW | Marb | RE | Fat |
|-----|----|----|----|----|-----|----|-----|------|----|------|----|-----|
| 54  | 60 | 14 | 5  | 37 | 29  | 43 | 16  | 9    | 2  | 1    | 11 | 20  |

Consigner: Cantrell Creek Angus Travis Cantrell 417-872-5570  
Ultra Provider is siring some of the hottest bulls in the Angus breed, and here is a chance to get in on the ground early! 'Ultra Mag' is out of the Cantrell Creek Embryo Program from the Erianna dynasty. 'Ultra Mag' is a big framed big spread bull, with BIG time potential! Be sure to high-lite his top EPDS with great Doc, Claw, Angle, HS, +1.93 Marb, and-- TOP 1% \$G, \$B, +375 \$C. The only non-parent bull in the breed with his combination of CED, WW, YW, RADG, YHT, DOC, CW, & Marb. A virgin bull ready to make a big impact on your herd! Be sure to check him out sale day!



CANTRELL CREEK ULTRA MAG 696  
LOT 2



DAM OF LOT 2  
WSC ERIANNA H819

### 3 SEO HOT LAVA J105 3055

Bull DOB: 03/26/23 Tattoo: 3055 Reg: 20626243

GB Fireball 672

SEO JL Hot Lava 0410

Bar W Momentum 7020

Deer Valley Growth Fund

GVC Lassie J105

GVC Lassie D035

|        |      |
|--------|------|
| BW     | 62   |
| ADJ WW | 848  |
| ADJ YW | 1232 |
| FRAME  | 7.1  |

| CED | BW  | WW   | YW   | RADG   | SC   | HP   | CEM | Milk |
|-----|-----|------|------|--------|------|------|-----|------|
| 11  | 0.8 | 95   | 179  | 0.4    | 1.18 | 12.7 | 16  | 26   |
| 15% | 40% | 1%   | 1%   | 1%     | 30%  | 45%  | 2%  | 55%  |
| Doc | CW  | Marb | RE   | Fat    | \$M  | \$W  | \$B | \$C  |
| 28  | 83  | 1.57 | 1.14 | -0.009 | 66   | 81   | 234 | 369  |
| 10% | 2%  | 2%   | 3%   | 25%    | 45%  | 4%   | 1%  | 1%   |

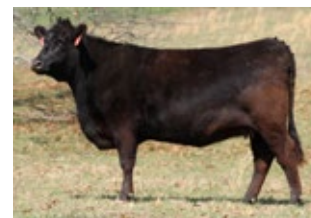
#### ANGUS GS

| CED | BW | WW | YW | SC | Doc | HP | CEM | Milk | CW | Marb | RE | Fat |
|-----|----|----|----|----|-----|----|-----|------|----|------|----|-----|
| 20  | 39 | 3  | 1  | 23 | 7   | 27 | 31  | 70   | 2  | 2    | 4  | 27  |

Consigner: Wiles Ridge Ranch Truman Wiles 417-252-0726  
Wow! The only bull in the breed with his combination of CED, BW, WW, YW, SCR, and \$C. What a combination of calving ease, growth, carcass, and fertility. We really like this breeding combination of the carcass from Fireball combined with the growth from Growth Fund. His dam was the highest weaning weight heifer in her group of 114 heifers at the Green Valley dispersal with a weaning weight ratio of 124.



SEO HOT LAVA J105 3055  
LOT 3



DAM OF LOT 3  
GVC LASSIE J105

**ELITE NUMBER PACKAGE BULLS**

**4 BRU RENEGADE B347**

Bull DOB: 03/19/23 Tattoo: B347 Reg: 20754691

G A R Home Town  
H P C A Renegade  
CAM Sure Fire A749

G A R Quantum  
H P C A Quantum 340  
H P C A Sure Fire A298

|       |    |
|-------|----|
| BW    | 76 |
| ADJ   |    |
| WW    |    |
| ADJ   |    |
| YW    |    |
| FRAME |    |

| CED | BW  | WW   | YW   | RADG   | SC   | HP   | CEM | Milk |
|-----|-----|------|------|--------|------|------|-----|------|
| 10  | 1.7 | 91   | 164  | 0.35   | 1.97 | 12.5 | 8   | 26   |
| 20% | 65% | 2%   | 2%   | 3%     | 3%   | 50%  | 55% | 55%  |
| Doc | CW  | Marb | RE   | Fat    | \$M  | \$W  | \$B | \$C  |
| 33  | 77  | 1.76 | 1.16 | -0.005 | 73   | 81   | 239 | 383  |
| 2%  | 5%  | 1%   | 3%   | 30%    | 25%  | 4%   | 1%  | 1%   |

**ANGUS GS**

| CED | BW | WW | YW | SC | Doc | HP | CEM | Milk | CW | Marb | RE | Fat |
|-----|----|----|----|----|-----|----|-----|------|----|------|----|-----|
| 42  | 61 | 17 | 4  | 3  | 7   | 24 | 85  | 53   | 12 | 2    | 5  | 30  |

**Consigner: Brubaker Genetics** Emanuel Brubaker 417-660-5189  
A really nice Renegade son from Brubaker Genetics. Check out his double digit calving ease, TOP 2% Weaning Weight and Yearling Weight, and TOP 3% RADG feed efficiency. A nice spread of solid numbers with his Carcass Weight being TOP 5% and Marb +1.76 TOP 1%. His Big3 dollar values are all TOP 4% or better, \$W, \$B, \$C. TOP 1% \$C +383. A stout number package, ready to go to work!



**SIRE OF LOT 4  
H P C A RENEGADE**

**5 BRU POWERSURGE 1103 3031**

Bull DOB: 03/12/23 Tattoo: 3031 Reg: 20635231

Roseda Powerball23 F091  
Roseda SEO Power Surge  
Roseda Ms Flora Divine F113

SEO Ultra Provider  
SEO 8509 Melanie 1103  
H P C A Anticipation L114

|       |    |
|-------|----|
| BW    | 68 |
| ADJ   |    |
| WW    |    |
| ADJ   |    |
| YW    |    |
| FRAME |    |

| CED | BW   | WW   | YW   | RADG   | SC   | HP   | CEM | Milk |
|-----|------|------|------|--------|------|------|-----|------|
| 11  | -0.2 | 89   | 159  | 0.31   | 1.61 | 10.1 | 14  | 35   |
| 15% | 20%  | 3%   | 2%   | 15%    | 10%  | 75%  | 10% | 10%  |
| Doc | CW   | Marb | RE   | Fat    | \$M  | \$W  | \$B | \$C  |
| 8   | 75   | 1.88 | 0.97 | -0.017 | 53   | 87   | 230 | 351  |
| 90% | 10%  | 1%   | 15%  | 15%    | 80%  | 1%   | 1%  | 1%   |

**ANGUS GS**

| CED | BW | WW | YW | SC | Doc | HP | CEM | Milk | CW | Marb | RE | Fat |
|-----|----|----|----|----|-----|----|-----|------|----|------|----|-----|
| 10  | 26 | 9  | 7  | 12 | 92  | 68 | 54  | 9    | 3  | 1    | 3  | 12  |

**Consigner: Brubaker Genetics** Emanuel Brubaker 417-660-5189  
An excellent combination of pedigrees in the this PowerSurge Bull, he combines the game-changing genetics of SEO Ultra Provider, Roseda Powerball, & H C P A Anticipation. Double digit calving ease with explosive growth and top feed efficiency. Be sure to really study the EPDs on this one has he boast many TOP 1% in both genomics and EPDS; TOP 1% MARB, \$W, \$B, & \$C. Mark your calendar early because this is one you are going to want to see in person!



**BRU POWERSURGE 1103 3031  
LOT 5**

**Ring Side  
Phone Bidding Available**

**FALL BULLS**

**6 BEAU'S PINNACLE 2258B**

Bull DOB: 10/14/22 Tattoo: 2258B Reg: 20805210

E W A Peyton 642  
HAF Pinnacle 2026  
Bridges Prophet 665

Connealy Legendary 644L  
Hawk Blackcap May 8036  
Hawk Blackcap May 6400

|       |      |
|-------|------|
| BW    | 73   |
| ADJ   | 791  |
| WW    |      |
| ADJ   | 1216 |
| YW    |      |
| FRAME | 6.6  |

| CED | BW  | WW   | YW   | RADG   | SC   | HP   | CEM | Milk |
|-----|-----|------|------|--------|------|------|-----|------|
| 7   | 2.1 | 85   | 146  | 0.3    | 0.34 | 12.9 | 6   | 32   |
| 45% | 70% | 5%   | 10%  | 20%    | 85%  | 45%  | 75% | 15%  |
| Doc | CW  | Marb | RE   | Fat    | \$M  | \$W  | \$B | \$C  |
| 19  | 67  | 1.02 | 0.72 | -0.039 | 65   | 82   | 184 | 304  |
| 50% | 15% | 20%  | 40%  | 4%     | 50%  | 3%   | 15% | 10%  |

**ANGUS GS**

| CED | BW | WW | YW | SC | Doc | HP | CEM | Milk | CW | Marb | RE | Fat |
|-----|----|----|----|----|-----|----|-----|------|----|------|----|-----|
| 67  | 72 | 3  | 15 | 80 | 28  | 48 | 88  | 25   | 5  | 22   | 24 | 6   |

**Consigner: Beau's Black Angus** Beau Davis 417-880-6863  
A powerful built bull form Beau's Black Angus. These Pinnacle son's have worked extremely well in Beau's herd! Note the Show-Me-Select-Calving Ease with TOP 5% weaning weight, and TOP 10% YW. Excellent dollar values in an extremely phenotypical package. This bull does it all whether you want to retain heifers with his TOP 15% Milk, or put pounds on calves with his +85 weaning weight he is full package bull!



**SIRE OF LOT 6  
HAF PINNACLE 2026**

*Bulls*

**FALL BULLS**

**7 CANTRELL CREEK ALLEGIANT 704**

Bull DOB: 10/1/22 Tattoo: 704 Reg: 20495334

*Big/WSC Iron Horse 025F*  
**WSC Allegiant H841**  
*Welytok Resource Erianna 7E9*  
*Hoover Impact R480*  
**Cantrell Creek Bardolena 574**  
*Cantrell Creek Bardolena 402*

|       |      |
|-------|------|
| BW    | 70   |
| ADJ   | 766  |
| WW    |      |
| ADJ   | 1276 |
| YW    |      |
| FRAME | 6.0  |

| CED | BW  | WW   | YW   | RADG   | SC   | HP  | CEM | Milk |
|-----|-----|------|------|--------|------|-----|-----|------|
| 9   | 1.6 | 88   | 163  | 0.4    | 0.06 | 12  | 9   | 30   |
| 30% | 60% | 3%   | 2%   | 1%     | 95%  | 55% | 45% | 25%  |
| Doc | CW  | Marb | RE   | Fat    | \$M  | \$W | \$B | \$C  |
| 32  | 79  | 0.84 | 1.31 | -0.082 | 46   | 74  | 213 | 322  |
| 3%  | 4%  | 35%  | 1%   | 1%     | 90%  | 15% | 2%  | 5%   |

**ANGUS GS**

| CED | BW | WW | YW | SC | Doc | HP | CEM | Milk | CW | Marb | RE | Fat |
|-----|----|----|----|----|-----|----|-----|------|----|------|----|-----|
| 27  | 45 | 4  | 3  | 91 | 9   | 61 | 64  | 48   | 4  | 37   | 1  | 1   |

**Consigner: Cantrell Creek Angus** Travis Cantrell 417-872-5570  
 Great Bull stemming from the great Erianna tribe, Welytok Resource Erianna 7E9. A maternal sister to the great Cantrell Creek 468 Donor. Note the spread on this Allegiant son +9 CED into a TOP 2% Yearling weight and TOP 1% +0.40 RADG feed efficiency. Be sure to grab a pen and circle the numbers on this one, there are 14 EPDs and GENOMICS that are TOP 5% or better. A virgin bull with an excellent look, pedigree, and numbers to boot!



**CANTRELL CREEK ALLEGIANT 704 LOT 7**

Pictures & Videos Online

**8 3M EXPONENTIAL 4182**

Bull DOB: 8/24/22 Tattoo: 4182 Reg: 20572937

*Casino Bomber N33*  
**K C F Bennett Exponential**  
*K C F Miss Southside B226*  
*Connealy Impression*  
**3M Forever Trendy 525 IMP**  
*CSC Forever Trendy 236*

|       |      |
|-------|------|
| BW    | 78   |
| ADJ   | 709  |
| WW    |      |
| ADJ   | 1117 |
| YW    |      |
| FRAME | 7.0  |

| CED | BW  | WW   | YW   | RADG   | SC   | HP  | CEM | Milk |
|-----|-----|------|------|--------|------|-----|-----|------|
| 7   | 1.9 | 87   | 155  | 0.35   | 0.47 | 9.9 | 5   | 28   |
| 45% | 65% | 4%   | 3%   | 3%     | 80%  | 80% | 85% | 40%  |
| Doc | CW  | Marb | RE   | Fat    | \$M  | \$W | \$B | \$C  |
| 25  | 77  | 0.88 | 0.94 | -0.014 | 59   | 78  | 195 | 312  |
| 20% | 5%  | 30%  | 15%  | 20%    | 65%  | 10% | 10% | 10%  |

**HD50K**

| CED | BW | WW | YW | SC | Doc | HP | CEM | Milk | CW | Marb | RE | Fat |
|-----|----|----|----|----|-----|----|-----|------|----|------|----|-----|
| 39  | 64 | 2  | 1  | 64 | 7   | 60 | 78  | 20   | 2  | 14   | 7  | 31  |

**Consigner: 3M Angus** David Montgomery 417-252-1050 or Jason Osborn 417-274-3482  
 A long bodied, cattleman's kind of bull! Show-Me-Select calving ease with explosive growth and feed efficiency. Note TOP 4% weaning weight, TOP 3% yearling weight, and TOP 3% RADG feed efficiency. This is the kind of bull that will put dollars in your pocket with added pounds and heifers you will want to retain. Be sure to check out this full package bull on sale day!



**3M EXPONENTIAL 582 LOT 8**

**9 STP PEYTON 185**

Bull DOB: 10/21/22 Tattoo: 185 Reg: 20592552

*E WA Peyton 642*  
**WRR Peyton 053**  
*WRR Lady Erica 663*  
*SydGen FATE 2800*  
**RG Lucy 0085**  
*Still Lucy 4027*

|       |      |
|-------|------|
| BW    | 68   |
| ADJ   | 645  |
| WW    |      |
| ADJ   | 1010 |
| YW    |      |
| FRAME |      |

| CED | BW  | WW   | YW  | RADG  | SC   | HP  | CEM | Milk |
|-----|-----|------|-----|-------|------|-----|-----|------|
| 12  | 0.4 | 76   | 136 | 0.28  | 1.36 | 9.2 | 9   | 30   |
| 10% | 35% | 20%  | 15% | 35%   | 20%  | 85% | 45% | 25%  |
| Doc | CW  | Marb | RE  | Fat   | \$M  | \$W | \$B | \$C  |
| 26  | 64  | 0.83 | 0.8 | 0.036 | 66   | 78  | 171 | 288  |
| 20% | 20% | 35%  | 30% | 80%   | 45%  | 10% | 20% | 20%  |

**HD50K**

| CED | BW | WW | YW | SC | Doc | HP | CEM | Milk | CW | Marb | RE | Fat |
|-----|----|----|----|----|-----|----|-----|------|----|------|----|-----|
| 8   | 12 | 23 | 18 | 12 | 20  | 78 | 81  | 16   | 19 | 37   | 33 | 59  |

**Consigner: Simon's Tall Pines** Drew Simon 417-838-2521  
 STP Peyton 185 is a very docile muscular bull. He boasts a +12 CED, +76 WW, +138 YW, +30 Milk, and his \$Values are excellent as well. He is a Show-Me-Select qualified bull, and would make an excellent addition to your herd.



**STP PEYTON 185 LOT 9**

Curve Bending Herd Sires



**FALL BULLS**

**10 WRR DYNAMIC 252**

Bull DOB: 09/17/22 Tattoo: 252 Reg: 20600276

Deer Valley Growth Fund  
**B A R Dynamic**  
 B A R Blackcap 7235-B0048  
 Bar R Jet Black 5063  
**WRR Forever Lassie 996**  
 WRR Forever Lassie 173

|        |      |
|--------|------|
| BW     | 65   |
| ADJ WW | 610  |
| ADJ YW | 1136 |
| FRAME  | 7.1  |

| CED | BW  | WW   | YW   | RADG  | SC   | HP   | CEM | Milk |
|-----|-----|------|------|-------|------|------|-----|------|
| 9   | 1.2 | 94   | 164  | 0.35  | 0.33 | 10.5 | 8   | 25   |
| 30% | 50% | 1%   | 2%   | 3%    | 85%  | 70%  | 55% | 60%  |
| Doc | CW  | Marb | RE   | Fat   | \$M  | \$W  | \$B | \$C  |
| 19  | 82  | 0.87 | 0.89 | 0.038 | 51   | 81   | 198 | 308  |
| 50% | 3%  | 30%  | 20%  | 85%   | 85%  | 4%   | 10% | 10%  |

**HD50K**

| CED | BW | WW | YW | SC | Doc | HP | CEM | Milk | CW | Marb | RE | Fat |
|-----|----|----|----|----|-----|----|-----|------|----|------|----|-----|
| 23  | 54 | 1  | 1  | 75 | 45  | 71 | 58  | 59   | 1  | 31   | 14 | 87  |

Consigner: Wiles Ridge Ranch Truman Wiles 417-252-0726  
 Show-Me Select qualified Dynamic son. Dynamic is the excellent calving ease ABS Growth Fund son. Dynamic is the excellent calving ease ABS Growth Fund son. Super gentle bull with an excellent set of EPDs. Top 1% weaning weight, Top 2% yearling weight, combined with a 310\$C. Dam has a 378 day calving interval. Notice his high performance pedigree. Three generations of Top ABS bulls.



**WRR DYNAMIC 252**  
**LOT 10**



**DAM OF LOT 10**  
**WRR FOREVER LASSIE 996**

**11 DHT MAG 510 CHARM B2?**

Bull DOB: 10/07/22 Tattoo: B27 Reg: 20815174

BUBS Southern Charm AA31  
**DHT Loa 833 Charmer 407**  
 DHT Generation 626 Loa 833  
 Mead Magnitude  
**DHT Mag 168 Sara 510**  
 DHT 747 Rampage Queen 168

|        |      |
|--------|------|
| BW     | 77   |
| ADJ WW | 688  |
| ADJ YW | 1092 |
| FRAME  | 6.0  |

| CED | BW  | WW   | YW   | RADG  | SC   | HP   | CEM | Milk |
|-----|-----|------|------|-------|------|------|-----|------|
| 7   | 0.7 | 84   | 142  | 0.28  | 1.37 | 14.3 | 8   | 34   |
| 45% | 40% | 10%  | 10%  | 35%   | 20%  | 30%  | 55% | 10%  |
| Doc | CW  | Marb | RE   | Fat   | \$M  | \$W  | \$B | \$C  |
| 22  | 61  | 0.71 | 0.94 | 0.002 | 64   | 86   | 155 | 265  |
| 35% | 25% | 45%  | 15%  | 35%   | 50%  | 2%   | 35% | 35%  |

**ANGUS GS**

| CED | BW | WW | YW | SC | Doc | HP | CEM | Milk | CW | Marb | RE | Fat |
|-----|----|----|----|----|-----|----|-----|------|----|------|----|-----|
| 9   | 10 | 11 | 20 | 12 | 40  | 26 | 39  | 8    | 16 | 53   | 28 | 53  |

Consigner: DHT Angus Cecil Huff 417-250-1300  
 Another Bubs Southern Charm progeny going back to the popular Generation 626 dam. Numerous compliments from new owners of the 626 cow family say they are the best cows in their herd. Great growth. On the top side we have the popular Charmer 407. This bull is doing great at producing great phenotype heifers and bulls. Bull has 20 EPD's in top 35% or higher Top 10% for Milk, WW and YW. Top 25% or higher for Scrotal Circumference and heifer pregnancy.



**DHT MAG 510 CHARM B2?**  
**LOT 11**

**12 3M EXPONENTIAL 582**

Bull DOB: 8/11/22 Tattoo: 582 Reg: 20572781

Casino Bomber N33  
**K C F Bennett Exponential**  
 K C F Miss Southside B226  
 CSC Future Discovery 834  
**3m Lucy 1080 834**  
 3M Lucy 1395

|        |      |
|--------|------|
| BW     | 71   |
| ADJ WW | 694  |
| ADJ YW | 1089 |
| FRAME  | 6.5  |

| CED | BW  | WW   | YW   | RADG   | SC   | HP   | CEM | Milk |
|-----|-----|------|------|--------|------|------|-----|------|
| 6   | 1.8 | 82   | 149  | 0.33   | 2.02 | 15.9 | 9   | 16   |
| 55% | 65% | 10%  | 5%   | 10%    | 3%   | 15%  | 45% | 95%  |
| Doc | CW  | Marb | RE   | Fat    | \$M  | \$W  | \$B | \$C  |
| 21  | 77  | 0.76 | 0.82 | -0.066 | 68   | 63   | 195 | 321  |
| 40% | 5%  | 40%  | 25%  | 1%     | 40%  | 40%  | 10% | 5%   |

**HD50K**

| CED | BW | WW | YW | SC | Doc | HP | CEM | Milk | CW | Marb | RE | Fat |
|-----|----|----|----|----|-----|----|-----|------|----|------|----|-----|
| 36  | 40 | 8  | 3  | 1  | 24  | 6  | 39  | 96   | 2  | 27   | 9  | 2   |

Consigner: 3M Angus David Montgomery 417-252-1050 or Jason Osborn 417-274-3482  
 A very smooth made Exponential son with an excellent muscle pattern. Note his excellent growth and carcass numbers Top 10% weaning weight, Top 5% yearling weight, Top 10% RADG feed efficiency, and Top 5% carcass weight. The Exponential cattle have really hit the nation by storm this year, they have an excellent eye appeal and muscle pattern, favorable growth, and TOP \$ Values.



**3M EXPONENTIAL 4182**  
**LOT 12**

*Bulls*

Curve Bending Herd Sires

**FALL BULLS**

**13 DHT 604 DISCOVERY 72**

Bull DOB: 10/30/22 Tattoo: 72 Reg: 20707608

A A R Ten X 7008 S A  
V A R Discovery 2240  
Deer Valley Rita 0308

DHT Predestined N Design 493  
DHT 036 Lady SS ND 604  
DHT SS Obj ND 878 494

|       |      |
|-------|------|
| BW    | 79   |
| ADJ   | 741  |
| WW    |      |
| ADJ   | 1091 |
| YW    |      |
| FRAME | 6.0  |

| CED | BW  | WW   | YW   | RADG  | SC   | HP   | CEM | Milk |
|-----|-----|------|------|-------|------|------|-----|------|
| 1   | 2.6 | 70   | 130  | 0.28  | 1.44 | 15.9 | 11  | 37   |
| 90% | 80% | 30%  | 25%  | 35%   | 20%  | 15%  | 25% | 4%   |
| Doc | CW  | Marb | RE   | Fat   | \$M  | \$W  | \$B | \$C  |
| 26  | 58  | 1.55 | 0.14 | 0.027 | 71   | 70   | 192 | 320  |
| 20% | 30% | 2%   | 95%  | 70%   | 30%  | 20%  | 10% | 10%  |

**ANGUS GS**

| CED | BW | WW | YW | SC | Doc | HP | CEM | Milk | CW | Marb | RE  | Fat |
|-----|----|----|----|----|-----|----|-----|------|----|------|-----|-----|
| 87  | 73 | 51 | 28 | 21 | 8   | 3  | 8   | 16   | 41 | 1    | 100 | 91  |

Consigner: DHT Angus Cecil Huff 417-250-1300

Proven sire and dam in this offering. Sire has 9068 progeny. Dam has 9 progeny. 18 EPD's in top 35% or higher for this proven bull. Top 4% Milk, top 2% Marb, top 10% \$C and \$B DISCOVERY is a rare genetic package that combines excellent maternal value and performance with elite carcass merit. If you're looking for proof, DISCOVERY has proven himself to be one of the multi-trait excellence sires in the breed, ranking in the top 5 percent of the breed for WW, YW, SC, MARB and \$W. Both sons and daughters have topped sales across the country. The 604 dam has produced some of the top animals in the DHT herd.



**DHT 604 DISCOVERY 72  
LOT 13**

**SPRING BULLS**

**14 WRR DNAMITE 311**

Bull DOB: 2/28/23 Tattoo: 311 Reg: 20743375

WR Journey-1X74  
MW DNAmite  
Welytok Total 10 Erianna 3B2

HAYNES Outright 452  
WRR Lady Princess 106  
WRR Lady Princess 807

|       |      |
|-------|------|
| BW    | 65   |
| ADJ   | 757  |
| WW    |      |
| ADJ   | 1117 |
| YW    |      |
| FRAME | 6.9  |

| CED | BW  | WW   | YW   | RADG   | SC   | HP   | CEM | Milk |
|-----|-----|------|------|--------|------|------|-----|------|
| 8   | 0.5 | 79   | 147  | 0.33   | 0.78 | 12.3 | 13  | 35   |
| 35% | 35% | 15%  | 10%  | 10%    | 60%  | 50%  | 10% | 10%  |
| Doc | CW  | Marb | RE   | Fat    | \$M  | \$W  | \$B | \$C  |
| 32  | 67  | 0.73 | 0.99 | -0.024 | 64   | 77   | 176 | 292  |
| 3%  | 15% | 45%  | 10%  | 10%    | 50%  | 10%  | 15% | 20%  |

**HD50K**

| CED | BW | WW | YW | SC | Doc | HP | CEM | Milk | CW | Marb | RE | Fat |
|-----|----|----|----|----|-----|----|-----|------|----|------|----|-----|
| 49  | 51 | 5  | 5  | 40 | 4   | 36 | 4   | 6    | 3  | 47   | 5  | 14  |

Consigner: Wiles Ridge Ranch Truman Wiles 417-252-0726

Show-Me Select qualified DNAmite son. He has a Top 15% weaning weight, Top 10% yearling weight, and Top 10% milk. This is a very relaxed easy going bull with a Top 3% docility EPD. He is picture perfect in his look and he moves really well. Dam has a 369 day calving interval and is an excellent young milking cow.



**WRR DNAMITE 311  
LOT 14**

**WINTER BULLS**

**15 VALLEY VIEW KAF INVESTOR 89**

Bull DOB: 12/27/22 Tattoo: 3189 Reg: 20626092

Deer Valley Growth Fund  
Valley View KAF Investor 535  
Valley View Queen 5035

Valley View Niagara 9165  
Valley View Lady 1889  
Valley View Lady 8389

|       |      |
|-------|------|
| BW    | 69   |
| ADJ   | 595  |
| WW    |      |
| ADJ   | 1167 |
| YW    |      |
| FRAME | 5.9  |

| CED | BW  | WW   | YW   | RADG  | SC   | HP   | CEM | Milk |
|-----|-----|------|------|-------|------|------|-----|------|
| 1   | 2.9 | 86   | 146  | 0.33  | 0.93 | 10.4 | 4   | 26   |
| 90% | 85% | 5%   | 10%  | 10%   | 50%  | 75%  | 90% | 55%  |
| Doc | CW  | Marb | RE   | Fat   | \$M  | \$W  | \$B | \$C  |
| 13  | 66  | 0.92 | 0.89 | 0.027 | 58   | 77   | 184 | 297  |
| 75% | 15% | 25%  | 20%  | 70%   | 70%  | 10%  | 15% | 15%  |

**ANGUS GS**

| CED | BW | WW | YW | SC | Doc | HP | CEM | Milk | CW | Marb | RE | Fat |
|-----|----|----|----|----|-----|----|-----|------|----|------|----|-----|
|     |    |    |    |    |     |    |     |      |    |      |    |     |

Consigner: Kates Angus Farms Rob Kates 217-259-2168

Investor '89 is a smooth, big topped bull with an abundance of middle and depth, and a clean front with TOP 5% Weaning Weight, 10% Yearling Weight, & 10% RADG feed Efficiency.



**SIRE OF LOT 15 & 17  
VALLEY VIEW KAF INVESTOR 535**

**Online Bidding Available  
www.LiveWireAuction.com**

**WINTER BULLS**

**16 K A F NIAGARA 3743**

Bull DOB: 1/9/23 Tattoo: 3743 Reg: 20890990

S S Niagara Z29  
Valley View Niagara 9165  
Valley View Queen 1665

JMB Traction 292  
Valley View Mary 743  
Valley View Eline 243

|        |      |
|--------|------|
| BW     | 69   |
| ADJ WW | 702  |
| ADJ YW | 1255 |
| FRAME  | 6.6  |

| CED | BW  | WW   | YW   | RADG  | SC   | HP   | CEM | Milk |
|-----|-----|------|------|-------|------|------|-----|------|
| 1   | 2.5 | 63   | 121  | 0.3   | 0.69 | 14.4 | 8   | 22   |
| 90% | 80% | 55%  | 35%  | 20%   | 65%  | 30%  | 55% | 80%  |
| Doc | CW  | Marb | RE   | Fat   | \$M  | \$W  | \$B | \$C  |
| 4   | 61  | 1.16 | 0.99 | -0.03 | 55   | 51   | 203 | 318  |
| 95% | 25% | 15%  | 10%  | 10%   | 75%  | 75%  | 4%  | 10%  |

**ANGUS GS**

| CED | BW | WW | YW | SC | Doc | HP | CEM | Milk | CW | Marb | RE | Fat |
|-----|----|----|----|----|-----|----|-----|------|----|------|----|-----|
|     |    |    |    |    |     |    |     |      |    |      |    |     |

Consigner: Kates Angus Farms Rob Kates 217-259-2168  
Long spined, smooth made bull with a big hip on him, sound and extremely easy moving. Note his solid growth, strong carcass traits, and TOP 4% \$B & 10% \$C. The Niagra 9165 calves have been very successful, in sales and have a solid look to them.



**SIRE OF LOT 16  
VALLEY VIEW NIAGARA 9165**

**17 VALLEY VIEW KAF INVESTOR 382**

Bull DOB: 1/10/23 Tattoo: 382 Reg: 20626094

Deer Valley Growth Fund  
Valley View KAF Investor 535  
Valley View Queen 5035

G A R Ashland  
Valley View Eline 1752  
Valley View Eline 752

|        |      |
|--------|------|
| BW     | 72   |
| ADJ WW | 624  |
| ADJ YW | 1225 |
| FRAME  | 6.1  |

| CED | BW  | WW   | YW   | RADG  | SC   | HP   | CEM | Milk |
|-----|-----|------|------|-------|------|------|-----|------|
| 0   | 3.7 | 86   | 141  | 0.22  | 0.12 | 12.3 | 4   | 30   |
| 90% | 95% | 5%   | 10%  | 80%   | 95%  | 50%  | 90% | 25%  |
| Doc | CW  | Marb | RE   | Fat   | \$M  | \$W  | \$B | \$C  |
| 8   | 62  | 0.37 | 0.81 | 0.045 | 53   | 78   | 130 | 222  |
| 90% | 25% | 85%  | 30%  | 90%   | 80%  | 10%  | 70% | 80%  |

**ANGUS GS**

| CED | BW | WW | YW | SC | Doc | HP | CEM | Milk | CW | Marb | RE | Fat |
|-----|----|----|----|----|-----|----|-----|------|----|------|----|-----|
|     |    |    |    |    |     |    |     |      |    |      |    |     |

Consigner: Kates Angus Farms Rob Kates 217-259-2168  
Smooth made bull with a neat front, and a nice top line. The Investor 535 calves have been explosive in their growth, they have a solid look and strong EPDs. Note the actual weights on this bull, I think he will be a crowd pleaser sale day.



**MGS OF LOT 17  
G A R ASHLAND**

**18 VALLEY VIEW GROWTH FUND 3185**

Bull DOB: 12/20/22 Tattoo: 3185 Reg: 20626118

Basin Payweight 1682  
Deer Valley Growth Fund  
Deer Valley Rita 36113

Valley View Sunrise 741  
Valley View Queen 1385  
Valley View Queen 335

|        |      |
|--------|------|
| BW     | 71   |
| ADJ WW | 705  |
| ADJ YW | 1394 |
| FRAME  | 6.3  |

| CED | BW  | WW   | YW   | RADG   | SC  | HP   | CEM | Milk |
|-----|-----|------|------|--------|-----|------|-----|------|
| 0   | 5.2 | 96   | 172  | 0.36   | 1   | 13.1 | 6   | 29   |
| 90% | 95% | 1%   | 1%   | 2%     | 45% | 40%  | 75% | 30%  |
| Doc | CW  | Marb | RE   | Fat    | \$M | \$W  | \$B | \$C  |
| 5   | 98  | 0.19 | 1.06 | -0.048 | 48  | 73   | 189 | 293  |
| 95% | 1%  | 95%  | 10%  | 2%     | 90% | 15%  | 10% | 15%  |

**ANGUS GS**

| CED | BW | WW | YW | SC | Doc | HP | CEM | Milk | CW | Marb | RE | Fat |
|-----|----|----|----|----|-----|----|-----|------|----|------|----|-----|
|     |    |    |    |    |     |    |     |      |    |      |    |     |

Consigner: Kates Angus Farms Rob Kates 217-259-2168  
3185 is all bull! Long bodied, big middle, square hip, smooth, & clean fronted! He has it all! A really nice bull with solid, pedigree and strong numbers. Look at his actual weights 705 adjusted weaning weight, and 1394 adjusted yearling weight. It pays to stay late because we always save something really special for the end!!



**SIRE OF LOT 18  
DEER VALLEY GROWTH FUND**

*Bulls*

The Next Generation

**20 E-LEE 1682 ERIANNA 763 FALL PAIRS**

Cow DOB: 04/01/17 Tattoo: 763 Reg: 18793154

Basin Payweight 006S  
**Basin Payweight 1682**  
 21AR O Lass 7017  
 A A R Ten X 7008 S A  
**Welytok Tot TenX Erianna 5C3**  
 Quaker Hill Erianna 8T2

|     |  |
|-----|--|
| BW  |  |
| ADJ |  |
| WW  |  |
| ADJ |  |
| YW  |  |

| CED | BW  | WW   | YW   | RADG   | SC   | HP   | CEM | Milk |
|-----|-----|------|------|--------|------|------|-----|------|
| 7   | 0.7 | 62   | 112  | 0.28   | 0.93 | 11.7 | 14  | 27   |
| 40% | 35% | 40%  | 35%  | 20%    | 40%  | 50%  | 5%  | 45%  |
| Doc | CW  | Marb | RE   | Fat    | \$M  | \$W  | \$B | \$C  |
| 22  | 49  | 0.88 | 0.65 | -0.013 | 63   | 62   | 172 | 286  |
| 25% | 30% | 15%  | 35%  | 20%    | 45%  | 30%  | 10% | 10%  |

**GGPLD**

| CED | BW | WW | YW | SC | Doc | HP | CEM | Milk | CW | Marb | RE | Fat |
|-----|----|----|----|----|-----|----|-----|------|----|------|----|-----|
| 26  | 34 | 54 | 46 | 49 | 17  | 50 | 5   | 65   | 42 | 28   | 48 | 53  |

**Consigner: Wiles Ridge Ranch Truman Wiles 417-252-0726**  
 This is a big volume and capacity daughter of Basin Payweight She has been an extremely productive cow with 5 calves at a 361 day calving interval. She has a flawless pedigree. Her grandmother was a well know donor for Quaker Hill farms donor Quaker Hill Erianna 8T2. Bred 12/01/2022 to 44 Boxed Beef 1164 Reg #20230195 (CED +8, WW +89, YW +157, RADG +.35, Milk +24, Marb +1.52, \$B +249, \$C +387) Pasture exposed to HR Powerball 2559 Reg # 20325077 (CED +7, WW +108, YW +193, RADG +.39, Milk +21, Marb +1.16, \$B +224, \$C +349)



**E-LEE 1682 ERIANNA 763 LOT 20**



**SERVICE SIRE FOR LOT 20 44 BOXED BEEF 1164**

**20A WRR ERIANNA 365**

Cow DOB: 09/16/23 Tattoo: 365 Reg: 20854176

Baldrige Alternative E125  
**Wilks No Substitute 2358**  
 Vintage Blackbird 6237  
 Basin Payweight 1682  
**E-Lee 1682 Erianna 763**  
 Welytok Tot TenX Erianna 5C3

|     |  |
|-----|--|
| BW  |  |
| ADJ |  |
| WW  |  |
| ADJ |  |
| YW  |  |

| CED | BW  | WW   | YW   | RADG   | SC   | HP   | CEM | Milk |
|-----|-----|------|------|--------|------|------|-----|------|
| 5   | 1.9 | 72   | 123  | 0.27   | 0.94 | 10.5 | 9   | 23   |
| 60% | 65% | 25%  | 30%  | 45%    | 45%  | 70%  | 45% | 75%  |
| Doc | CW  | Marb | RE   | Fat    | \$M  | \$W  | \$B | \$C  |
| 20  | 63  | 0.88 | 1.25 | -0.028 | 77   | 68   | 187 | 320  |
| 45% | 25% | 35%  | 2%   | 10%    | 15%  | 25%  | 15% | 10%  |

**ANGUS GS**

| CED | BW | WW | YW | SC | Doc | HP | CEM | Milk | CW | Marb | RE | Fat |
|-----|----|----|----|----|-----|----|-----|------|----|------|----|-----|
| 49  | 53 | 37 | 32 | 55 | 27  | 66 | 40  | 73   | 17 | 27   | 1  | 17  |

**Consigner: Wiles Ridge Ranch Truman Wiles 417-252-0726**  
 Big \$C Wilks No Substitute heifer. The "No Substitute" cattle have excellent balance and muscle pattern. This heifer has a great set of feet and legs. She also has super EPDs Top 2% angle and Top 15% claw. She should make a really good brood cow.



**WRR ERIANNA 365 LOT 20A**

**21 WRR ROYAL LASS 850**

Cow DOB: 09/08/18 Tattoo: 850 Reg: 19312812

Jindra 3rd Dimension  
**Jindra Acclaim**  
 Jindra Blackbird Lassy 1111  
 Poss Total Impact 745  
**WRR Royal Lass 246**  
 WRR Lady Extender 508

|     |     |
|-----|-----|
| BW  | 57  |
| ADJ |     |
| WW  | 572 |
| ADJ |     |
| YW  | 764 |

| CED | BW  | WW   | YW   | RADG  | SC    | HP  | CEM | Milk |
|-----|-----|------|------|-------|-------|-----|-----|------|
| 15  | -2  | 44   | 81   | 0.25  | -0.07 | 12  | 18  | 23   |
| 2%  | 3%  | 90%  | 85%  | 40%   | 95%   | 50% | 1%  | 75%  |
| Doc | CW  | Marb | RE   | Fat   | \$M   | \$W | \$B | \$C  |
| 15  | 32  | 0.66 | 0.28 | 0.023 | 61    | 45  | 145 | 249  |
| 60% | 75% | 35%  | 85%  | 65%   | 50%   | 80% | 35% | 35%  |

**ANGUS GS**

| CED | BW | WW | YW | SC | Doc | HP | CEM | Milk | CW | Marb | RE | Fat |
|-----|----|----|----|----|-----|----|-----|------|----|------|----|-----|
| 1   | 1  | 92 | 87 | 90 | 51  | 40 | 8   | 86   | 76 | 47   | 84 | 75  |

**Consigner: Simon's Tall Pines Drew Simon 417-838-2521**  
 WRR Royal Lass 850 is from a long line of productive cows. Note her EPDs of +15 CED, -2.0 BW, & +18 CEM. She is a very balanced Docile cow. She was bred to WRR Thedford 203 (Reg #20370961 CED +10, WW +81, YW +146, RADG +.35, Milk +35, \$C +341) on 12/29/23 and due to calve on Oct 8, 2024.



**WRR ROYAL LASS 850 LOT 21**

## 21A STP PEYTON 038

### FALL PAIRS

Bull DOB: 10/20/23 Tattoo: 038 Reg: 20906357

E W A Peyton 642  
**WRR Peyton 053**  
 WRR Lady Erica 663  
 Jindra Acclaim  
**WRR Royal Lass 850**  
 WRR Royal Lass 246

|     |    |
|-----|----|
| BW  | 73 |
| ADJ |    |
| WW  |    |
| ADJ |    |
| YW  |    |

| CED | BW   | WW   | YW   | RADG  | SC   | HP   | CEM | Milk |
|-----|------|------|------|-------|------|------|-----|------|
| 13  | -0.8 | 60   | 109  | 0.29  | 0.22 | 11.7 | 13  | 25   |
| 10% | 15%  | 60%  | 60%  | 25%   | 90%  | 60%  | 10% | 60%  |
| Doc | CW   | Marb | RE   | Fat   | \$M  | \$W  | \$B | \$C  |
| 16  | 49   | 0.85 | 0.51 | 0.022 | 54   | 57   | 169 | 273  |
| 65% | 55%  | 35%  | 70%  | 65%   | 80%  | 60%  | 20% | 30%  |



**STP PEYTON 038**  
**LOT 21A**

| CED | BW | WW | YW | SC | Doc | HP | CEM | Milk | CW | Marb | RE | Fat |
|-----|----|----|----|----|-----|----|-----|------|----|------|----|-----|
|     |    |    |    |    |     |    |     |      |    |      |    |     |

Consigner: Simon's Tall Pines Drew Simon 417-838-2521  
 Sired by WRR Peyton 053 affectionally known as Trey around Simon's Tall Pines. Reg # 20040911. This young stud is a +13 CED, low birth weight bull, and like his sire docile and gentle.

### SPRING PAIRS

## 22 WRR FOREVER LASSIE 1104

Cow DOB: 12/10/21 Tattoo: 1104 Reg: 20428808

G A R Ashland  
**G A R Greater Good**  
 G A R Sure Fire A5008  
 Byergo Black Magic 3348  
**WRR Forever Lassie 950**  
 WRR Forever Lassie 579

|     |     |
|-----|-----|
| BW  | 60  |
| ADJ | 656 |
| WW  |     |
| ADJ | 936 |
| YW  |     |

| CED | BW  | WW   | YW   | RADG   | SC   | HP   | CEM | Milk |
|-----|-----|------|------|--------|------|------|-----|------|
| 3   | 2.5 | 85   | 153  | 0.31   | 0.07 | 12.9 | 10  | 31   |
| 75% | 80% | 5%   | 4%   | 15%    | 95%  | 40%  | 35% | 20%  |
| Doc | CW  | Marb | RE   | Fat    | \$M  | \$W  | \$B | \$C  |
| 22  | 59  | 1    | 0.53 | -0.002 | 66   | 79   | 166 | 281  |
| 35% | 30% | 25%  | 75%  | 35%    | 45%  | 5%   | 25% | 25%  |



**WRR FOREVER LASSIE 1104**  
**LOT 22**

| CED | BW | WW | YW | SC | Doc | HP | CEM | Milk | CW | Marb | RE | Fat |
|-----|----|----|----|----|-----|----|-----|------|----|------|----|-----|
| 48  | 47 | 12 | 7  | 93 | 33  | 59 | 38  | 20   | 19 | 23   | 64 | 28  |

Consigner: Wiles Ridge Ranch Truman Wiles 417-252-0726  
 This is a standout first calf heifer. She is thick and deep ribbed with an excellent udder. Big time growth heifer with a Top 5% WW and a Top 4% YW EPD. She is a great milking with a 30 Milk EPD. Sells with Poss Deadwood bull calf. This calf is definitely herd bull material.  
 BRED 3/26/24 to K A Kindred Reg# 20446645 (CED +10, WW +79, YW +149, RADG +.36, Milk +31, MARB +1.83, \$B +246, \$C +391)

## 22A WRR DEADWOOD 391

Bull DOB: 12/16/23 Tattoo: 391 Reg: 20904752

Poss Maverick  
**Poss Deadwood**  
 Poss Ellunamere 399  
 G A R Greater Good  
**WRR Forever Lassie 1104**  
 WRR Forever Lassie 950

|     |  |
|-----|--|
| BW  |  |
| ADJ |  |
| WW  |  |
| ADJ |  |
| YW  |  |

| CED | BW  | WW   | YW  | RADG  | SC   | HP  | CEM | Milk |
|-----|-----|------|-----|-------|------|-----|-----|------|
| 5   | 2.2 | 83   | 150 | 0.34  | 0.62 | 12  | 9   | 29   |
| 60% | 75% | 10%  | 5%  | 4%    | 70%  | 55% | 45% | 30%  |
| Doc | CW  | Marb | RE  | Fat   | \$M  | \$W | \$B | \$C  |
| 22  | 69  | 1.53 | 0.7 | 0.005 | 60   | 75  | 219 | 344  |
| 35% | 15% | 3%   | 45% | 40%   | 65%  | 15% | 2%  | 2%   |



**WRR DEADWOOD 391**  
**LOT 22A**

| CED | BW | WW | YW | SC | Doc | HP | CEM | Milk | CW | Marb | RE | Fat |
|-----|----|----|----|----|-----|----|-----|------|----|------|----|-----|
|     |    |    |    |    |     |    |     |      |    |      |    |     |

Consigner: Wiles Ridge Ranch Truman Wiles 417-252-0726

*Herd Sire Prospect*

*Fall Pairs*

*All buyers invited to view the sale animals morning of sale day and evening before sale.*

Spring Pairs

23

**WRR FOREVER LASSIE 789** SPRING PAIRS

Cow DOB: 11/04/17 Tattoo: 789 Reg: 19117711

AA R Ten X 7008 SA  
EXAR Stud 4658B  
BoBo Rita 1559

Quaker Hill Rampage 0A36  
WRR Forever Lassie 546  
WRR Forever Lassie 173

|     |     |
|-----|-----|
| BW  | 65  |
| ADJ | 726 |
| WW  |     |
| ADJ | 995 |
| YW  |     |

| CED | BW  | WW   | YW   | RADG   | SC  | HP   | CEM | Milk |
|-----|-----|------|------|--------|-----|------|-----|------|
| 10  | 1.2 | 75   | 129  | 0.3    | 0.6 | 14.8 | 14  | 12   |
| 20% | 45% | 10%  | 15%  | 10%    | 65% | 20%  | 5%  | 95%  |
| Doc | CW  | Marb | RE   | Fat    | \$M | \$W  | \$B | \$C  |
| 15  | 57  | 0.64 | 0.65 | -0.021 | 33  | 53   | 164 | 246  |
| 60% | 15% | 40%  | 35%  | 10%    | 95% | 60%  | 15% | 35%  |



**WRR FOREVER LASSIE 789**  
**LOT 23**

**ANGUS GS**

| CED | BW | WW | YW | SC | Doc | HP | CEM | Milk | CW | Marb | RE | Fat |
|-----|----|----|----|----|-----|----|-----|------|----|------|----|-----|
| 15  | 24 | 56 | 46 | 57 | 44  | 28 | 8   | 98   | 54 | 69   | 50 | 10  |

Consigner: Wiles Ridge Ranch Truman Wiles 417-252-0726  
Beautiful well made EXAR Stud daughter. You will be impressed with her length of body and overall thickness. She has been an extremely productive cow with 5 calves at a 354 day calving interval. Note her Top 20% CED with a Top 10% weaning weight EPD. We are offering you a special treat with her EAR Prime Time 0002 heifer calf. This will be one of the first heifer calves to sell from the high marbling 400\$C stand-out.



**DAM OF LOT 23**  
**WRR FOREVER LASSIE 546**

23A

**WRR FOREVER LASSIE 411**

Cow DOB: 03/04/24 Tattoo: 411 Reg: 20906051

GB Fireball 672  
EAR Prime Time 0002  
ACC Barbara 8038

EXAR Stud 4658B  
WRR Forever Lassie 789  
WRR Forever Lassie 546

|     |  |
|-----|--|
| BW  |  |
| ADJ |  |
| WW  |  |
| ADJ |  |
| YW  |  |

| CED | BW  | WW   | YW  | RADG   | SC   | HP   | CEM | Milk |
|-----|-----|------|-----|--------|------|------|-----|------|
| 10  | 1.6 | 72   | 130 | 0.33   | 0.69 | 15.1 | 12  | 23   |
| 20% | 60% | 25%  | 20% | 10%    | 65%  | 20%  | 15% | 75%  |
| Doc | CW  | Marb | RE  | Fat    | \$M  | \$W  | \$B | \$C  |
| 17  | 62  | 1.5  | 0.8 | -0.006 | 47   | 60   | 216 | 327  |
| 60% | 25% | 4%   | 35% | 30%    | 90%  | 45%  | 2%  | 5%   |



**SIRE OF LOT 23A**  
**EAR PRIME TIME 0002**

| CED | BW | WW | YW | SC | Doc | HP | CEM | Milk | CW | Marb | RE | Fat |
|-----|----|----|----|----|-----|----|-----|------|----|------|----|-----|
|     |    |    |    |    |     |    |     |      |    |      |    |     |

Consigner: Wiles Ridge Ranch Truman Wiles 417-252-0726

Pictures &  
Videos Online

**FALL BORN OPEN HEIFERS**

25

**BRU MISS VERACIOUS B366**

Cow DOB: 09/16/23 Tattoo: B366 Reg: 20759190

Mill Brae Identified 4031  
HPCA Veracious  
H P C A Sunrise A246

G A R Home Town  
H P C A Home Town 251  
G A R Sure Fire 3117

|     |    |
|-----|----|
| BW  | 61 |
| ADJ |    |
| WW  |    |
| ADJ |    |
| YW  |    |

| CED | BW  | WW   | YW   | RADG   | SC   | HP   | CEM | Milk |
|-----|-----|------|------|--------|------|------|-----|------|
| 9   | 1.2 | 81   | 141  | 0.3    | 0.98 | 14.6 | 7   | 34   |
| 30% | 50% | 10%  | 10%  | 25%    | 45%  | 25%  | 65% | 10%  |
| Doc | CW  | Marb | RE   | Fat    | \$M  | \$W  | \$B | \$C  |
| 18  | 69  | 1.54 | 1.03 | -0.005 | 77   | 84   | 218 | 360  |
| 55% | 15% | 3%   | 10%  | 30%    | 15%  | 2%   | 2%  | 1%   |



**BRU MISS VERACIOUS B366**  
**LOT 25**

**ANGUS GS**

| CED | BW | WW | YW | SC | Doc | HP | CEM | Milk | CW | Marb | RE | Fat |
|-----|----|----|----|----|-----|----|-----|------|----|------|----|-----|
| 13  | 21 | 35 | 25 | 34 | 50  | 14 | 94  | 5    | 25 | 2    | 11 | 42  |

Consigner: Brubaker Genetics Emanuel Brubaker 417-660-5189  
A really nice heifer out of the now deceased Veracious. Note the incredible spread on this heifer CED +9 to YW +141 all with +.30 RADG and over a buck-fifty on Marbeling at +1.54. Miss Veracious is soft ribbed, with a bold hip, and excellent eye appeal. Here is a young donor in the making with her combination of calving ease, growth, carcass traits, and \$Values. Be sure to circle that TOP 1% +360 \$C. A real sale attraction come check her out sale day!

Open Heifers

**26 3/0 9169 ARES 331 FALL BORN OPEN HEIFERS**

Cow DOB: 9/6/23 Tattoo: 331 Reg: 20743832  
 WAR Cavalry B063 Z044  
 PAR Ares 0615  
 CoX Rita Y05C 4107  
 SydGen Enhance  
 HR Evergreen 9169  
 HR Evergreen 7655

|     |  |
|-----|--|
| BW  |  |
| ADJ |  |
| WW  |  |
| ADJ |  |
| YW  |  |



| CED | BW  | WW   | YW   | RADG   | SC   | HP  | CEM | Milk |
|-----|-----|------|------|--------|------|-----|-----|------|
| 10  | 0.6 | 79   | 152  | 0.37   | 0.57 | 9.3 | 13  | 25   |
| 20% | 35% | 15%  | 4%   | 2%     | 70%  | 80% | 10% | 60%  |
| Doc | CW  | Marb | RE   | Fat    | \$M  | \$W | \$B | \$C  |
| 20  | 86  | 1.07 | 1.06 | -0.004 | 52   | 69  | 224 | 343  |
| 45% | 2%  | 20%  | 10%  | 30%    | 80%  | 20% | 2%  | 2%   |

**3/0 9169 ARES 331 LOT 26**

| CED | BW | WW | YW | SC | Doc | HP | CEM | Milk | CW | Marb | RE | Fat |
|-----|----|----|----|----|-----|----|-----|------|----|------|----|-----|
| 59  | 61 | 21 | 3  | 62 | 46  | 64 | 6   | 52   | 2  | 16   | 5  | 51  |

Consigner: 3/0 Angus Wes Ogle 417-448-4126  
 WOW this Ares heifer flat gets it! Check out her double digit calving ease, explosive growth, and TOP 2% RADG. As docile as the come this heifer is destined for the Donor Pen. Deep bodied, soggy middled, and sound as a cat! The Ares heifers have been taking the nation by storm, and here is your chance to get an elite package of looks and numbers!



DAM OF LOT 26 & 32  
 HR EVERGREEN 9169

**27 BRU MISTY B362**

Cow DOB: 09/12/23 Tattoo: B362 Reg: 20760439  
 G A R Home Town  
 H P C A Vision  
 H P C A Quantum S479  
 G A R Ashland  
 Hart Misti 8068  
 Hart Misti 6227

|     |    |
|-----|----|
| BW  | 63 |
| ADJ |    |
| WW  |    |
| ADJ |    |
| YW  |    |



**BRU MISTY B362 LOT 27**

| CED | BW   | WW   | YW  | RADG   | SC   | HP   | CEM | Milk |
|-----|------|------|-----|--------|------|------|-----|------|
| 11  | -0.1 | 87   | 144 | 0.26   | -0.3 | 12.9 | 4   | 21   |
| 15% | 25%  | 4%   | 10% | 50%    | 95%  | 40%  | 90% | 85%  |
| Doc | CW   | Marb | RE  | Fat    | \$M  | \$W  | \$B | \$C  |
| 16  | 73   | 1.24 | 1.0 | -0.007 | 65   | 81   | 202 | 327  |
| 65% | 10%  | 15%  | 15% | 30%    | 45%  | 4%   | 5%  | 5%   |

**ANGUS GS**

| CED | BW | WW | YW | SC | Doc | HP | CEM | Milk | CW | Marb | RE | Fat |
|-----|----|----|----|----|-----|----|-----|------|----|------|----|-----|
| 9   | 9  | 38 | 56 | 92 | 68  | 53 | 88  | 92   | 14 | 9    | 14 | 22  |

Consigner: Brubaker Genetics Emanuel Brubaker 417-660-5189  
 A really nice Vision daughter out of Brubaker's elite Hart Misti Donor. Just like her mother she boast a square hip, with the depth and width of a Freight Train! Note the double digit calving ease, and TOP 4% weaning weight growth on this female. A solid set of carcass EPDs well with both Marb and RE breaking the 1N1 barrier. Her Big3 dollar values are all TOP 5% or better, \$W, \$B, \$C.



DAM OF LOT 27  
 HART MISTI 8068

**SPRING BORN OPEN HEIFERS**

**30 BMA ERICA 305**

Cow DOB: 1/3/23 Tattoo: 305 Reg: 20746388  
 SydGen Big Branch 6653  
 SydGen Eternity 0046  
 SydGen Evergreen 5005  
 SydGen FATE 2800  
 BMA Erica 954  
 BMA Erica 645

|     |     |
|-----|-----|
| BW  | 74  |
| ADJ |     |
| WW  | 569 |
| ADJ |     |
| YW  | 847 |



**BMA ERICA 305 LOT 30**

| CED | BW  | WW   | YW   | RADG | SC   | HP   | CEM | Milk |
|-----|-----|------|------|------|------|------|-----|------|
| 4   | 3.1 | 84   | 149  | 0.34 | 1.66 | 13.9 | 8   | 37   |
| 70% | 90% | 10%  | 5%   | 5%   | 10%  | 30%  | 55% | 3%   |
| Doc | CW  | Marb | RE   | Fat  | \$M  | \$W  | \$B | \$C  |
| 29  | 95  | 0.76 | 1.07 | 0.02 | 72   | 79   | 214 | 350  |
| 10% | 1%  | 45%  | 10%  | 65%  | 30%  | 5%   | 3%  | 2%   |

**ANGUS GS**

| CED | BW | WW | YW | SC | Doc | HP | CEM | Milk | CW | Marb | RE | Fat |
|-----|----|----|----|----|-----|----|-----|------|----|------|----|-----|
| 34  | 39 | 23 | 11 | 20 | 6   | 37 | 50  | 8    | 1  | 38   | 5  | 71  |

Consigner: Blue Mound Angus Fred Swartzentruber 417-327-3752  
 This heifer ratio'd 106 for weaning and 101 for yearling. Top 1% CW, Top 10% RE, Top 5% \$W. and TOP 2% for both \$B & \$C! Offspring from Great GranDam Erica line, do good on genomics.

Open Heifers

Dignified Cow Families

**31**

**WRR FOREVER LASSIE 316** *SPRING BORN OPEN HEIFERS*

Cow DOB: 03/07/23 Tattoo: 316 Reg: 20742846

Casino Bomber N33  
**K C F Bennett Exponential**  
 K C F Miss Southside B226

KB-Full Measure C40  
**WRR Forever Lassie 938**  
 WRR Forever Lassie 579

|     |     |
|-----|-----|
| BW  | 60  |
| ADJ | 613 |
| WW  |     |
| ADJ |     |
| YW  |     |



**WRR FOREVER LASSIE 316**  
**LOT 31**

| CED | BW  | WW   | YW   | RADG   | SC   | HP   | CEM | Milk |
|-----|-----|------|------|--------|------|------|-----|------|
| 9   | 0.3 | 80   | 150  | 0.36   | 0.51 | 10.4 | 12  | 24   |
| 30% | 30% | 10%  | 5%   | 2%     | 75%  | 70%  | 15% | 70%  |
| Doc | CW  | Marb | RE   | Fat    | \$M  | \$W  | \$B | \$C  |
| 24  | 70  | 1.02 | 0.85 | -0.078 | 52   | 68   | 206 | 319  |
| 25% | 15% | 25%  | 25%  | 1%     | 80%  | 25%  | 4%  | 10%  |

**HD50K**

| CED | BW | WW | YW | SC | Doc | HP | CEM | Milk | CW | Marb | RE | Fat |
|-----|----|----|----|----|-----|----|-----|------|----|------|----|-----|
| 57  | 81 | 1  | 1  | 56 | 9   | 47 | 50  | 55   | 2  | 9    | 10 | 4   |

**Consigner: Wiles Ridge Ranch** Truman Wiles 417-252-0726  
 Exponential daughters are becoming some of the most popular females in the breed. This is an excellent calving ease and growth combination female. She has a Top 10 % weaning weight and a Top 5% yearling weight EPD. She is a top carcass female with a Top 4%, 207 \$B. Dam has a 355 day calving interval and is an excellent milking cow. This heifer descends from our pathfinder foundation 742 cow. This entire cow family has been extremely productive.

**32**

**3/O 9169 PARAGON 308**

Cow DOB: 2/28/23 Tattoo: 308 Reg: 20612261

G A R Combustion  
**Ankonian Paragon 0C4**  
 G A R Early Bird N985

SydGen Enhance  
**HR Evergreen 9169**  
 HR Evergreen 7655

|     |  |
|-----|--|
| BW  |  |
| ADJ |  |
| WW  |  |
| ADJ |  |
| YW  |  |



**3/O 9169 PARAGON 308**  
**LOT 32**

| CED | BW   | WW   | YW   | RADG   | SC   | HP   | CEM | Milk |
|-----|------|------|------|--------|------|------|-----|------|
| 13  | -0.8 | 66   | 126  | 0.34   | 1.37 | 10.6 | 15  | 31   |
| 10% | 15%  | 40%  | 25%  | 5%     | 20%  | 70%  | 3%  | 20%  |
| Doc | CW   | Marb | RE   | Fat    | \$M  | \$W  | \$B | \$C  |
| 28  | 59   | 1.49 | 0.96 | -0.009 | 64   | 66   | 214 | 343  |
| 10% | 30%  | 4%   | 15%  | 25%    | 50%  | 30%  | 3%  | 2%   |

| CED | BW | WW | YW | SC | Doc | HP | CEM | Milk | CW | Marb | RE | Fat |
|-----|----|----|----|----|-----|----|-----|------|----|------|----|-----|
| 2   | 2  | 79 | 43 | 21 | 9   | 47 | 20  | 31   | 56 | 8    | 9  | 23  |

**Consigner: 3/O Angus** Wes Ogle 417-448-4126  
 A clean fronted, long bodied female that combines the pedigrees of Paragon, Evergreen, and Enhance. A very nice combination of calving ease, docility, growth, and feed efficiency. A super gentle heifer, that will make the entire family proud. I especially like her combination of calving ease with a smooth muscle pattern. Note her TOP 2% +343 \$C, +13 CED, +1.37 SC this heifer has the potential to mate with variety of bulls, to raise outlier genomic gems!

**33**

**BMA RITA 306**

Cow DOB: 1/6/23 Tattoo: 306 Reg: 20746390

SydGen Big Branch 6653  
**SydGen Eternity 0046**  
 SydGen Evergreen 5005

SydGen Exceed 3223  
**BMA Rita 816**  
 B M A Rita 447

|     |     |
|-----|-----|
| BW  | 78  |
| ADJ | 612 |
| WW  |     |
| ADJ | 926 |
| YW  |     |



**BMA RITA 306**  
**LOT 33**

| CED | BW  | WW   | YW   | RADG  | SC   | HP   | CEM | Milk |
|-----|-----|------|------|-------|------|------|-----|------|
| 6   | 2.3 | 70   | 124  | 0.31  | 0.54 | 13.8 | 11  | 35   |
| 55% | 75% | 30%  | 30%  | 15%   | 70%  | 30%  | 25% | 10%  |
| Doc | CW  | Marb | RE   | Fat   | \$M  | \$W  | \$B | \$C  |
| 14  | 72  | 0.88 | 0.64 | 0.015 | 65   | 69   | 194 | 317  |
| 75% | 10% | 35%  | 55%  | 55%   | 45%  | 20%  | 10% | 10%  |

**ANGUS GS**

| CED | BW | WW | YW | SC | Doc | HP | CEM | Milk | CW | Marb | RE | Fat |
|-----|----|----|----|----|-----|----|-----|------|----|------|----|-----|
| 36  | 8  | 53 | 49 | 81 | 50  | 20 | 29  | 16   | 24 | 17   | 58 | 65  |

**Consigner: Blue Mound Angus** Fred Swartzentruber 417-327-3752  
 This heifer ratio'd 114 for weaning and 110 for yearling. Top 10% for CW, \$B, & \$C. Blue Mound Angus has used 100% AI sires & No Clean up Bulls for the 19 plus years.



**SPRING BORN OPEN HEIFERS**

**34 WRR PRITTA OF CANANGA 313**

Cow DOB: 03/04/23 Tattoo: 313 Reg: 20742641

Bar R Jet Black 5063  
Hoffman Thedford  
HA Rito Lady 3839

|     |     |
|-----|-----|
| BW  | 66  |
| ADJ | 659 |
| WW  |     |
| ADJ |     |
| YW  |     |

MW DNAmite  
WRR Pritta of Cananga 103  
WRR HA Pritta of Cananga 906

| CED | BW   | WW   | YW   | RADG   | SC  | HP   | CEM | Milk |
|-----|------|------|------|--------|-----|------|-----|------|
| 12  | -0.3 | 65   | 126  | 0.33   | 0.6 | 16.9 | 7   | 30   |
| 10% | 20%  | 45%  | 25%  | 10%    | 70% | 10%  | 65% | 25%  |
| Doc | CW   | Marb | RE   | Fat    | \$M | \$W  | \$B | \$C  |
| 18  | 63   | 0.66 | 1.15 | -0.034 | 73  | 67   | 184 | 312  |
| 55% | 25%  | 55%  | 4%   | 10%    | 25% | 25%  | 15% | 10%  |

**HD50K**

| CED | BW | WW | YW | SC | Doc | HP | CEM | Milk | CW | Marb | RE | Fat |
|-----|----|----|----|----|-----|----|-----|------|----|------|----|-----|
| 4   | 13 | 21 | 12 | 80 | 41  | 4  | 83  | 35   | 3  | 43   | 2  | 11  |

Consigner: Wiles Ridge Ranch Truman Wiles 417-252-0726

This is a chance to get on the Thedford Train! Thedford is building a name as one of the best curve bender bulls in the breed. This is an excellent calving ease female. Top 10% CED and Top 20% birth weight. She does that while having a Top 25% yearling weight EPD. She descends from a Connealy Onward daughter that was chosen as a pick of the herd female in a prior Connealy sale.



**WRR PRITTA OF CANANGA 313  
LOT 34**

**35 BMA PRINCESS 249**

Cow DOB: 10/2/22 Tattoo: 249 Reg: 20651655

E WA Peyton 642  
DE-SU Volunteer B122  
E WA 3128 of 9067 Weigh Up

|     |     |
|-----|-----|
| BW  | 55  |
| ADJ | 428 |
| WW  |     |
| ADJ | 729 |
| YW  |     |

SydGen Enhance  
BMA Princess 034  
BMA Princess 570

| CED | BW   | WW   | YW   | RADG  | SC   | HP   | CEM | Milk |
|-----|------|------|------|-------|------|------|-----|------|
| 10  | -0.6 | 58   | 114  | 0.26  | 0.95 | 15.5 | 10  | 31   |
| 20% | 15%  | 65%  | 45%  | 50%   | 45%  | 15%  | 35% | 20%  |
| Doc | CW   | Marb | RE   | Fat   | \$M  | \$W  | \$B | \$C  |
| 20  | 43   | 1.80 | 0.69 | 0.015 | 85   | 64   | 199 | 344  |
| 45% | 70%  | 1%   | 50%  | 55%   | 5%   | 35%  | 10% | 2%   |

**ANGUS GS**

| CED | BW | WW | YW | SC | Doc | HP | CEM | Milk | CW | Marb | RE | Fat |
|-----|----|----|----|----|-----|----|-----|------|----|------|----|-----|
| 21  | 31 | 73 | 33 | 36 | 44  | 25 | 65  | 46   | 58 | 1    | 47 | 50  |

Consigner: Blue Mound Angus Fred Swartzentruber 417-327-3752

Sired by De-Su Volunteer B122. A full brother to the dam of this heifer was the 2nd High Selling Bull at the SW MO Tested Bull sale for \$5700. TOP 1% MARB at +1.80, TOP 10% \$B, and TOP 2% \$C at +344. Volunteer is deceased and only a limited amount of semen is available.



**BMA PRINCESS 249  
LOT 35**

**BRED COWS**

**40 SPRUCE MTN RITA 0306**

Cow DOB: 7/27/20 Tattoo: 0306 Reg: 19785960

SydGen Enhance  
S S Enforcer E812  
S S Miss Daybreak K011 3K17

|     |     |
|-----|-----|
| BW  | 71  |
| ADJ | 699 |
| WW  |     |
| ADJ |     |
| YW  |     |

EXAR Monumental 6056B  
Spruce Mtn Rita 8168  
G A R Objective 1885

| CED | BW  | WW   | YW   | RADG  | SC   | HP   | CEM | Milk |
|-----|-----|------|------|-------|------|------|-----|------|
| 5   | 0.7 | 86   | 153  | 0.28  | 0.64 | 16.2 | 4   | 22   |
| 55% | 35% | 2%   | 2%   | 20%   | 65%  | 10%  | 85% | 80%  |
| Doc | CW  | Marb | RE   | Fat   | \$M  | \$W  | \$B | \$C  |
| 31  | 64  | 1.26 | 0.93 | 0.011 | 70   | 75   | 183 | 307  |
| 2%  | 10% | 3%   | 10%  | 50%   | 25%  | 10%  | 5%  | 3%   |

**ANGUS GS**

| CED | BW | WW | YW | SC | Doc | HP | CEM | Milk | CW | Marb | RE | Fat |
|-----|----|----|----|----|-----|----|-----|------|----|------|----|-----|
| 59  | 27 | 18 | 15 | 64 | 6   | 18 | 98  | 74   | 26 | 9    | 14 | 56  |

Consigner: Cantrell Creek Angus Travis Cantrell 417-872-5570

Daughter of the powerful Rita 8168, a great cow family with tremendous potential. GrandDam is the great 1885 donor, and the Dam to G A R Prophet. Talk about an amazing pedigree with the combination of Miss Daybreak and Objective 1885. Countless donors, and herd sires have come from these prolific cow families. Bred to Calve the end of September 2024 to Williams CC Prime Reg # 20368920 (CED +9, WW +86, YW +155, RADG +32 Milk +34, Marb +2.05, \$B +264, \$C +379). Great producing young cow with years of profitability and production ahead of her!



**S S MISS DAYBREAK K011 3K17  
PGD OF LOT 40**



**MGD OF LOT 40 & DAM OF LOT 41  
G A R OBJECTIVE 1885**

*Open Heifers*

*Bred Cows*

Bred Cows

**41 SPRUCE MTN RITA 8168 BRED COWS**

Cow DOB: 7/31/18 Tattoo: 8168 Reg: 19284502

3F Epic 4631  
**EXAR Monumental 6056B**  
 FWY 7008 of C085 4029  
 S S Objective T510 0T26  
**G A R Objective 1885**  
 G A R 1407 New Design 2232

|     |     |
|-----|-----|
| BW  | 70  |
| ADJ | 724 |
| WW  |     |
| ADJ |     |
| YW  |     |



| CED | BW  | WW   | YW   | RADG  | SC   | HP   | CEM | Milk |
|-----|-----|------|------|-------|------|------|-----|------|
| 12  | 0   | 76   | 134  | 0.23  | 0.13 | 12.4 | 9   | 18   |
| 10% | 25% | 10%  | 10%  | 55%   | 90%  | 45%  | 45% | 95%  |
| Doc | CW  | Marb | RE   | Fat   | \$M  | \$W  | \$B | \$C  |
| 22  | 62  | 1.12 | 0.61 | 0.012 | 49   | 61   | 173 | 273  |
| 25% | 10% | 10%  | 40%  | 50%   | 80%  | 35%  | 10% | 15%  |

**HD50K**

| CED | BW | WW | YW | SC | Doc | HP | CEM | Milk | CW | Marb | RE | Fat |
|-----|----|----|----|----|-----|----|-----|------|----|------|----|-----|
| 45  | 29 | 18 | 25 | 86 | 45  | 32 | 89  | 87   | 17 | 25   | 67 | 63  |

**SPRUCE MTN RITA 8168 LOT 41**



**MGD OF WILLIAMS CC PRIME**  
 SERVICE SIRE FOR LOT 41  
**POWELL ERICA 7312**

**Consigner: Cantrell Creek Angus** Travis Cantrell 417-872-5570  
 POWER COW! Direct daughter of the GREAT 1885 donor and mother to the prolific G A R Prophet. Weighed 1940 lbs on pasture! Due approximately October 10th to Cantrell's great herd bull Williams CC Prime Reg # 20368920 (CED +9, WW +86, YW +155, RADG +.32 Milk +34, Marb +2.05, \$B +264, \$C +379). William CC Prime's grandam is the great Powell Erica 7312, dam of Hollywood and Jonesboro. The combination of powerful proven pedigrees, outstanding EPDs, makes this a true show stopper, come check her out sale day!

**BRED HEIFERS**

**51 AF MISS UNIQUE 1682-2322A**

Cow DOB: 09/28/22 Tattoo: 2322A Reg: 20623447

Basin Payweight 006S  
**Basin Payweight 1682**  
 21AR O Lass 7017  
 Deer Valley Unique 5635  
**AF Emme Unique 4218**  
 A F Gridiron's Emme 492

|     |     |
|-----|-----|
| BW  | 62  |
| ADJ | 622 |
| WW  |     |
| ADJ |     |
| YW  |     |



**AF MISS UNIQUE 1682-2322A LOT 50A**



**SERVICE SIRE FOR LOT 50A**  
**TEHAMA PATRIARCH F028**

| CED | BW  | WW   | YW   | RADG  | SC   | HP   | CEM | Milk |
|-----|-----|------|------|-------|------|------|-----|------|
| 6   | 0.9 | 71   | 122  | 0.24  | 1.86 | 10.7 | 9   | 30   |
| 55% | 45% | 25%  | 30%  | 70%   | 5%   | 65%  | 45% | 25%  |
| Doc | CW  | Marb | RE   | Fat   | \$M  | \$W  | \$B | \$C  |
| 23  | 50  | 0.59 | 0.46 | 0.048 | 76   | 77   | 134 | 250  |
| 30% | 55% | 65%  | 80%  | 90%   | 20%  | 10%  | 65% | 50%  |

**ANGUS GS**

| CED | BW | WW | YW | SC | Doc | HP | CEM | Milk | CW | Marb | RE | Fat |
|-----|----|----|----|----|-----|----|-----|------|----|------|----|-----|
| 39  | 25 | 30 | 45 | 4  | 18  | 61 | 21  | 44   | 50 | 65   | 66 | 83  |

**Consigner: Asher Farms** Tom Asher 417-257-3220  
 An excellent heifer from Asher farms! This female is deep bodied with a square hip and a neat front end. A foundation female from the proven Payweight. Payweight daughters are known for their depth of body and ease of fleshing with nice udder structure and a brood cow look. Payweight is a Pathfinder Sire who amazes visitors to ORlgen with his power and mobility at 13 years of age. Vet Confirmed AI Bred 12/18/23 to Tehama Patriarch F028 Reg # 18981191 (CED +14, WW +66, YW +130, RADG +.29, Milk +30, Marb +.88, \$B +162, \$C, +283)

Bred Heifers

All buyers invited to view the sale animals morning of sale day

Join us for donuts & coffee sale day morning

Juniors sign up for \$100 drawing

**BRED HEIFERS**

**52 BRU SURPASS B322**

Cow DOB: 10/17/22 Tattoo: B322 Reg: 20655080

TEX Playbook 5437

BJ Surpass  
BJ Prophet 5275

G A R Quantum  
H P C A Quantum 340  
H P C A Sure Fire A298

|     |    |
|-----|----|
| BW  | 62 |
| ADJ |    |
| WW  |    |
| ADJ |    |
| YW  |    |

| CED | BW   | WW   | YW   | RADG   | SC   | HP  | CEM | Milk |
|-----|------|------|------|--------|------|-----|-----|------|
| 12  | -0.1 | 73   | 127  | 0.26   | 1.01 | 11  | 11  | 33   |
| 10% | 25%  | 25%  | 25%  | 50%    | 40%  | 65% | 25% | 10%  |
| Doc | CW   | Marb | RE   | Fat    | \$M  | \$W | \$B | \$C  |
| 27  | 54   | 0.97 | 0.77 | -0.008 | 81   | 80  | 169 | 300  |
| 15% | 45%  | 30%  | 40%  | 30%    | 10%  | 4%  | 25% | 15%  |

**ANGUS GS**

| CED | BW | WW | YW | SC | Doc | HP | CEM | Milk | CW | Marb | RE | Fat |
|-----|----|----|----|----|-----|----|-----|------|----|------|----|-----|
| 4   | 8  | 28 | 52 | 19 | 76  | 6  | 72  | 3    | 31 | 42   | 34 | 29  |

Consigner: **Brubaker Genetics** Emanuel Brubaker 417-660-5189  
Bru Surpass B233 is a long bodied, clean fronted female, with extra body, and a solid foundation of feet and structure. Note her spread EPDs and strong maternal traits. The Surpass calves have been in high demand this year, as they consistently move to the top of their contemporary groups, and exemplify calving ease, growth, and maternal traits. She was naturally exposed to SEO Jonesboro J028 2801 10/3/23-12/7/23 (Reg # 20558618 CED +8, WW +106, YW +182, RADG +.35, Milk +33, MARB +1.43, \$B 222, \$C 364). Vet confirmed bred.  
Exposed 12/14/23-2/14/24 to Williams Promogen II Reg # 20015240.



**BRU SURPASS B322  
LOT 52**



SERVICE SIRE FOR LOT 52  
SEO JONESBORO J028 2801

**53 CC BEEF GEORGIA K263**

Cow DOB: 10/09/22 Tattoo: K263 Reg: 20462389

S S Enforcer E812  
Galaxy Enforcer 0872  
Galaxy Peggy 4210

FHCC Emphasize 8552  
FHCC Georgia 1145  
FHCC Georgia 7526

|     |     |
|-----|-----|
| BW  | 65  |
| ADJ |     |
| WW  | 568 |
| ADJ |     |
| YW  |     |

| CED | BW  | WW   | YW   | RADG  | SC   | HP  | CEM | Milk |
|-----|-----|------|------|-------|------|-----|-----|------|
| 5   | 1.9 | 79   | 140  | 0.28  | 0.71 | 13  | 7   | 31   |
| 60% | 65% | 15%  | 10%  | 35%   | 60%  | 40% | 65% | 20%  |
| Doc | CW  | Marb | RE   | Fat   | \$M  | \$W | \$B | \$C  |
| 28  | 54  | 0.69 | 0.87 | 0.011 | 92   | 75  | 154 | 292  |
| 10% | 45% | 55%  | 25%  | 50%   | 2%   | 10% | 40% | 20%  |

| CED | BW | WW | YW | SC | Doc | HP | CEM | Milk | CW | Marb | RE | Fat |
|-----|----|----|----|----|-----|----|-----|------|----|------|----|-----|
|     |    |    |    |    |     |    |     |      |    |      |    |     |

Consigner: **Crooked Creek Beef** Bill McLaren 314-960-0212  
A very nice Galaxy Enforcer daughter from CC Beef 21' Heifer Selection at Frank/Hazelrigg Cattle Co. Note the Top 15% WW, Top 10% YW, and +31 Milk. AI bred to calve 9/14/24 to Conealy Commerce Reg #20132642 (CED +16, WW +88, YW +150, RADG +.30, MARB +.80, \$B +182, \$C +313). Commerce offers massive rib shape, big feet, and an unforgettable presence. Georgia, like her mother is a long bodied, clean fronted female. This combination should be something really special!



**DAM OF LOT 53  
FHCC GEORGIA 1145**



SERVICE SIRE FOR LOT 53  
CONNEALY COMMERCE

**54 WRR LASSIE W 305**

Cow DOB: 1/9/23 Tattoo: 305 Reg: 20742008

E W A Peyton 642  
WRR Peyton 009  
WRR Forever Lassie 791

Jindra Acclaim  
WRR Lassie W 9107  
WRR Lassie W 351

|     |     |
|-----|-----|
| BW  | 68  |
| ADJ |     |
| WW  | 767 |
| ADJ |     |
| YW  |     |

| CED | BW  | WW   | YW   | RADG  | SC   | HP   | CEM | Milk |
|-----|-----|------|------|-------|------|------|-----|------|
| 7   | 1.6 | 79   | 133  | 0.26  | 0.89 | 16.7 | 5   | 29   |
| 45% | 60% | 15%  | 20%  | 50%   | 50%  | 10%  | 85% | 30%  |
| Doc | CW  | Marb | RE   | Fat   | \$M  | \$W  | \$B | \$C  |
| 28  | 56  | 0.73 | 0.68 | 0.009 | 70   | 74   | 146 | 259  |
| 10% | 40% | 50%  | 50%  | 50%   | 35%  | 15%  | 50% | 45%  |

**HD50K**

| CED | BW | WW | YW | SC | Doc | HP | CEM | Milk | CW | Marb | RE | Fat |
|-----|----|----|----|----|-----|----|-----|------|----|------|----|-----|
| 40  | 42 | 21 | 37 | 32 | 9   | 2  | 89  | 22   | 36 | 51   | 55 | 46  |

Consigner: **Wiles Ridge Ranch** Truman Wiles 417-252-0726  
This heifer is a super female. The Peyton/Acclaim combination has been particularly successful. This heifer displays excellent growth with superb muscle combination. Note her Top 10% weaning weight and Top 20% yearling weight EPD. She is a very gentle heifer out of a great milking dam. Her dam is a very productive cow with a 379 day calving interval with a 106 WW ratio. BRED 3/26/24 to K A Kindred Reg# 20446645 (CED +10, WW +79, YW +149, RADG +.36, Milk +31, MARB +1.83, \$B +246, \$C +391).



**WRR LASSIE W 305  
LOT 54**



SERVICE SIRE FOR LOT 54  
KA KINDRED

Bred Heifers

Exciting Young Genetics

### 55 BMA ERICA 150

**BRED HEIFERS**

Cow DOB: 12/2/21 Tattoo: 150 Reg: 20434024  
 SydGen Exceed 3223  
**SydGen Enhance**  
 SydGen Rita 2618  
 SydGen Blacksmith 4010  
**BMA Erica 725**  
 B M A Erica 455

|     |     |
|-----|-----|
| BW  | 64  |
| 564 | 564 |
| ADJ | 975 |
| YW  |     |

| CED | BW  | WW   | YW   | RADG   | SC   | HP   | CEM | Milk |
|-----|-----|------|------|--------|------|------|-----|------|
| 6   | 0.4 | 65   | 125  | 0.32   | 0.75 | 13.7 | 10  | 36   |
| 55% | 30% | 45%  | 30%  | 15%    | 60%  | 30%  | 35% | 4%   |
| Doc | CW  | Marb | RE   | Fat    | \$M  | \$W  | \$B | \$C  |
| 35  | 57  | 0.94 | 0.72 | -0.019 | 65   | 66   | 177 | 295  |
| 1%  | 35% | 30%  | 45%  | 15%    | 45%  | 30%  | 20% | 15%  |



**BMA ERICA 150**  
**LOT 55**

| CED | BW | WW | YW | SC | Doc | HP | CEM | Milk | CW | Marb | RE | Fat |
|-----|----|----|----|----|-----|----|-----|------|----|------|----|-----|
| 73  | 31 | 63 | 19 | 63 | 2   | 13 | 22  | 4    | 30 | 41   | 58 | 32  |

Consigner: Blue Mound Angus Fred Swartzentruber 417-327-3752  
 This heifer ratio'd 109 at weaning and 111 at yearling. Bred 12-24-23 to Sydgen Smokey 2001, who is TOP 1% for both \$B & \$C. Bred 12/24/23 to Sydgen Smokey 2001 Reg # 20396595 (CED +10, WW +76, YW+146, RADG +.32, Milk +37, Marb +1.40, \$B +244, \$C +379). Vet ultrasounded safe to AI with bull calf.



SERVICE SIRE FOR LOT 56  
SYDGEN SMOKEY 2001

### 56 CC BEEF BONNIE K246

Cow DOB: 9/15/22 Tattoo: K246 Reg: 20450739  
 TEX Playbook 5437  
**BJ Surpass**  
 BJ Prophet 5275  
 LD Capitalist 316  
**CCA Capitalist F13**  
 CCA Bonnie C73

|     |     |
|-----|-----|
| BW  | 72  |
| ADJ | 683 |
| WW  |     |
| ADJ |     |
| YW  |     |

| CED | BW  | WW   | YW   | RADG   | SC   | HP   | CEM | Milk |
|-----|-----|------|------|--------|------|------|-----|------|
| 10  | 1.5 | 87   | 129  | 0.21   | 0.71 | 12.7 | 11  | 31   |
| 20% | 55% | 4%   | 25%  | 85%    | 60%  | 45%  | 25% | 20%  |
| Doc | CW  | Marb | RE   | Fat    | \$M  | \$W  | \$B | \$C  |
| 14  | 53  | 0.69 | 0.86 | -0.025 | 88   | 93   | 145 | 276  |
| 75% | 45% | 55%  | 25%  | 15%    | 3%   | 1%   | 50% | 30%  |



**SIRE OF LOT 56 & 52**  
**BJ SURPASS**

**ANGUS GS**

| CED | BW | WW | YW | SC | Doc | HP | CEM | Milk | CW | Marb | RE | Fat |
|-----|----|----|----|----|-----|----|-----|------|----|------|----|-----|
| 23  | 38 | 6  | 66 | 52 | 66  | 10 | 52  | 30   | 18 | 30   | 16 | 31  |

Consigner: Crooked Creek Beef Bill McLaren 314-960-0212  
 CC Beef Bonnie K246, stems from the productive Bonnie family, CCA Bonnie C73 is a pathfinder. Bonnie K246 combines the phenomenal phenotype & bold rib of Capitalist with the neat front end, deep rib, and balance of Surpass. Bonnie K246 stems from two of the soundest bulls in the breed and is TOP 15% Claw & 25% Angle. She is due 9/14/24 to Baldrige Heat Seaker H925 Reg # 19806485 (CED +9, WW +71, YW +128, RADG +.32, Milk +31, MARB +1.56, \$B 223, \$C +387).



SERVICE SIRE FOR LOT 56  
BALDRIDGE HEAT SEAKER H925

Bid Online



**LIVE WIRE AUCTION**

[WWW.LIVEWIREAUCTION.COM](http://WWW.LIVEWIREAUCTION.COM)

**EMBRYOS**

**G A R IDENTIFIED 781S X**

**60**

**FF RITO AMBITIOUS**

3 IVF Embryos Guarantee 1 Pregnancy

Located at Bluestem Carlton, KS

SEO Ultra Provider

FF Rito Ambitious (Reg # 20437882)

RMRK Rita 0237

Mill Brae Identified 4031

G A R Identified 781S (Reg # 20297903)

G A R Sure Fire 387

|      | CED | BW  | WW   | YW   | RADG   | SC   | HP   | CEM | Milk |
|------|-----|-----|------|------|--------|------|------|-----|------|
| Sire | 9   | 2.8 | 89   | 156  | 0.33   | 0.78 | 15.3 | 10  | 21   |
|      | 30% | 85% | 3%   | 3%   | 10%    | 60%  | 20%  | 35% | 85%  |
| Dam  | 8   | 1.1 | 77   | 141  | 0.33   | 1.54 | 13.7 | 8   | 24   |
|      | 30% | 45% | 10%  | 4%   | 3%     | 10%  | 30%  | 55% | 65%  |
|      | Doc | CW  | Marb | RE   | Fat    | \$M  | \$W  | \$B | \$C  |
| Sire | 27  | 85  | 2.0  | 1.07 | -0.013 | 80   | 73   | 264 | 422  |
|      | 15% | 2%  | 1%   | 10%  | 20%    | 15%  | 1%   | 1%  | 1%   |
| Dam  | 23  | 79  | 1.79 | 0.93 | 0.057  | 86   | 73   | 245 | 404  |
|      | 20% | 1%  | 1%   | 10%  | 95%    | 3%   | 10%  | 1%  | 1%   |



**G A R IDENTIFIED 781S**

Projected  
+413 \$C  
Mating



**FF RITO AMBITIOUS**

Selling 3 IVF Embryos Guarantee 1 Pregnancy if transferred by an AETA certified embryologist or Whitaker Embryo services. Buyer will be furnished with certificate of embryo transfer.

**TK BLACKBIRD 9546 X**

**61**

**FF RITO HUSTLER 1B69**

3 IVF Heifer Sexed Embryos Guarantee 1 Pregnancy

Located at Transova Sioux City, Iowa

SEO Ultra Provider

FF Rito Hustler 1B69 (Reg # 20325042)

RMRK Rita 0237

K C F Bennett Summation

TK Blackbird 9546 (Reg # 19625459)

Montana Blackbird 4558

|      | CED | BW  | WW   | YW   | RADG   | SC   | HP   | CEM | Milk |
|------|-----|-----|------|------|--------|------|------|-----|------|
| Sire | 9   | 3   | 84   | 153  | 0.31   | 0.71 | 17.4 | 6   | 28   |
|      | 30% | 85% | 10%  | 4%   | 15%    | 60%  | 5%   | 75% | 40%  |
| Dam  | 7   | 1.2 | 91   | 163  | 0.34   | 1.36 | 10.3 | 10  | 37   |
|      | 40% | 45% | 1%   | 1%   | 2%     | 15%  | 70%  | 30% | 4%   |
|      | Doc | CW  | Marb | RE   | Fat    | \$M  | \$W  | \$B | \$C  |
| Sire | 24  | 88  | 1.9  | 0.93 | -0.011 | 80   | 71   | 257 | 413  |
|      | 25% | 1%  | 1%   | 15%  | 20%    | 10%  | 20%  | 1%  | 1%   |
| Dam  | 24  | 84  | 0.72 | 1.1  | 0.011  | 59   | 89   | 192 | 308  |
|      | 20% | 1%  | 30%  | 2%   | 50%    | 55%  | 1%   | 3%  | 3%   |



**TK BLACKBIRD 9546**



**FF RITO HUSTLER 1B69**

Consigner: Smith Valley Angus Kim & Brian Smith 573-729-2910  
Smith Valley has brought something really special to the power sale! Hustler semen is not available to the public and here is a guarantee to get a female into your program! Hustler is the top-selling bull of the Friendship Farms Dispersal that combines phenotype, genotype, in a big number package! TK Blackbird 9546 is the \$25,000 selection of Smith Valley from 2021 TK Cattle Co. 9545 has a gorgeous muscle pattern, length of body and clean front end. The combination of Summation and Ultra Provider, adds to the power of this big bodied, good footed, mating!

Selling 3 IVF SXF Embryos Guarantee 1 Pregnancy if transferred by an AETA certified embryologist or Whitaker Embryo services. Buyer will be furnished with certificate of embryo transfer.

**4 SONS BLACKCAP 7K14 X**

**62**

**FF RITO AMBITIOUS**

3 IVF Embryos Guarantee 1 Pregnancy

Located at ReproLogix Fort Scott, KS

SEO Ultra Provider

FF Rito Ambitious (Reg # 20437882)

RMRK Rita 0237

G A R Home Town

4 Sons Blackcap 7K14 (Reg # 20476471)

Vintage Blackcap 6018

|      | CED | BW  | WW   | YW   | RADG   | SC   | HP   | CEM | Milk |
|------|-----|-----|------|------|--------|------|------|-----|------|
| Sire | 9   | 2.8 | 89   | 156  | 0.33   | 0.78 | 15.3 | 10  | 21   |
|      | 30% | 85% | 3%   | 3%   | 10%    | 60%  | 20%  | 35% | 85%  |
| Dam  | 12  | 1.4 | 87   | 153  | 0.32   | 1.99 | 16.3 | 13  | 20   |
|      | 10% | 55% | 4%   | 4%   | 15%    | 3%   | 10%  | 10% | 90%  |
|      | Doc | CW  | Marb | RE   | Fat    | \$M  | \$W  | \$B | \$C  |
| Sire | 27  | 85  | 2    | 1.07 | -0.013 | 80   | 73   | 264 | 422  |
|      | 15% | 2%  | 1%   | 10%  | 20%    | 15%  | 15%  | 1%  | 1%   |
| Dam  | 22  | 74  | 1.88 | 1.07 | -0.044 | 66   | 73   | 249 | 389  |
|      | 35% | 10% | 1%   | 10%  | 3%     | 45%  | 15%  | 1%  | 1%   |



**VINTAGE BLACKCAP 6018  
DAM OF 4 SONS BLACKCAP 7K14**



**FF RITO AMBITIOUS**

Consigner: 3/0 Angus Wes Ogle 417-448-4126  
7K14 is a direct daughter of the \$120,000 valuation donor Vintage Blackcap 6018, currently in production at 4 Sons. 7K14 like her mother is clean fronted, with a soft middle, powerful hip and smooth gait. This combination of power and looks with Ambitious should be a home run phenotypically as well as numerically. FF Rito Ambitious topped the final Friendship bull sale a few weeks after the dispersal when he sold for \$235,000 and semen packages from him have been the talk of the Angus breed as 2023 came to a close with no other semen to be available from him until 2025. Get ahead of the game with this projected 406 \$C mating!

Selling 3 IVF Embryos Guarantee 1 Pregnancy if transferred by an AETA certified embryologist or Whitaker Embryo services. Buyer will be furnished with certificate of embryo transfer.

Embryos

Game Changing Genetics

**63** **TK BLACKBIRD 9546 X**  
**INGRAM HEISMAN 0566**

3 IVF Heifer Sexed Embryos Guarantee 1 Pregnancy  
 Connealy Confidence Plus Located at Transova Sioux City, Iowa  
**Ingram Heisman 0566 (Reg # 19958805)**  
 RB Lady Denver 167-453  
 K C F Bennett Summation  
**TK Blackbird 9546 (Reg # 19625459)**  
 Montana Blackbird 4558

|      | CED | BW  | WW   | YW   | RADG  | SC   | HP   | CEM | Milk |
|------|-----|-----|------|------|-------|------|------|-----|------|
| Sire | 6   | 1.6 | 89   | 151  | 0.28  | 0.22 | 14.6 | 7   | 33   |
|      | 55% | 60% | 3%   | 5%   | 30%   | 90%  | 20%  | 65% | 15%  |
| Dam  | 7   | 1.2 | 91   | 163  | 0.34  | 1.36 | 10.3 | 10  | 37   |
|      | 40% | 45% | 1%   | 1%   | 2%    | 15%  | 70%  | 30% | 4%   |
|      | Doc | CW  | Marb | RE   | Fat   | \$M  | \$W  | \$B | \$C  |
| Sire | 30  | 90  | 1.37 | 1.14 | 0.038 | 86   | 88   | 218 | 369  |
|      | 10% | 1%  | 3%   | 3%   | 80%   | 5%   | 1%   | 2%  | 1%   |
| Dam  | 24  | 84  | 0.72 | 1.1  | 0.011 | 59   | 89   | 192 | 308  |
|      | 20% | 1%  | 30%  | 2%   | 50%   | 55%  | 1%   | 3%  | 3%   |



**TK BLACKBIRD 9546**



**INGRAM HEISMAN 0566**

**Consigner: Smith Valley Angus Kim & Brian Smith 573-729-2910**  
 Well I spoke to soon Smith Valley has brought something even more special to the Power sale! With the passing of Heisman, an opportunity to add a daughter of his to your herd is become rarer by the day. These embryos offer an elite number package that will make the whole family proud. Heisman has done an excellent job creating PGS heifers that have been quite successful. 9545 is an phenomenal match to him with her mass, depth, sound structure and clean front end. Hang some banners & and top the charts with this one!  
 Selling 3 IVF SXF Embryos Guarantee 1 Pregnancy if transferred by an AETA certified embryologist or Whitaker Embryo services. Buyer will be furnished with certificate of embryo transfer.

**64** **44 ERIANNA 2192 X**  
**FF RITO AMBITIOUS**

3 IVF Embryos Guarantee 1 Pregnancy  
 SEO Ultra Provider Located at ReproLogix Fort Scott, KS  
**FF Rito Ambitious (Reg # 20437882)**  
 RMRK Rita 0237  
 Ankonian Paragon 0C4  
**44 Erianna 2192 (Reg # 20294459)**  
 44 Erianna 2058

|      | CED | BW  | WW   | YW   | RADG   | SC   | HP   | CEM | Milk |
|------|-----|-----|------|------|--------|------|------|-----|------|
| Sire | 9   | 2.8 | 89   | 156  | 0.33   | 0.78 | 15.3 | 10  | 21   |
|      | 30% | 85% | 3%   | 3%   | 10%    | 60%  | 20%  | 35% | 85%  |
| Dam  | 5   | 2.3 | 81   | 149  | 0.37   | 0    | 12.6 | 8   | 36   |
|      | 60% | 75% | 10%  | 5%   | 2%     | 95%  | 45%  | 55% | 4%   |
|      | Doc | CW  | Marb | RE   | Fat    | \$M  | \$W  | \$B | \$C  |
| Sire | 27  | 85  | 2.0  | 1.07 | -0.013 | 80   | 73   | 264 | 422  |
|      | 15% | 2%  | 1%   | 10%  | 20%    | 15%  | 15%  | 1%  | 1%   |
| Dam  | 24  | 79  | 1.6  | 1.19 | -0.051 | 53   | 75   | 245 | 371  |
|      | 25% | 4%  | 2%   | 3%   | 2%     | 80%  | 10%  | 1%  | 1%   |



**44 ERIANNA 2192**



**FF RITO AMBITIOUS**

**Consigner: 3/O Angus Wes Ogle 417-448-4126**  
 2192 is sired by the \$270,000 Maplebrook holdings and Ankony Farm sire Paragon, who is now deceased. Erianna 2058 is a direct daughter of Kirk's Black Angus foundational donor 6D60 sired, by Poss Maverick. 2192 much like her mother has a very attractive phenotype, with growth, and an extremely impressive set of carcass numbers. Every Carcass trait on 2192 is TOP 4% or better! Wes is flexing his prowess as an astute cattleman on this mating, 2192's carcass traits, growth, and \$ Values matched up with Ambitious's calving ease, growth, +2.0 Marb, and +422 \$C could break the \$400 \$C barrier!  
 Selling 3 IVF Embryos Guarantee 1 Pregnancy if transferred by an AETA certified embryologist or Whitaker Embryo services. Buyer will be furnished with certificate of embryo transfer.

**65** **POWELL ERICA 8075 X**  
**EAR PRIME TIME 0002**

3 IVF Heifer Sexed Embryos Guarantee 1 Pregnancy  
 GB Fireball 672 Located at Cantrell Creek Niangua, MO  
**EAR Prime Time 0002 (Reg # 19733707)** Available Sale Day  
 ACC Barbara 8038 or Shipping through  
 Show-Me-Genetics  
 ECO Lombardi 1512  
**Powell Erica 8075 (Reg # 19122665)**  
 Williams Prop Erica 255 110

|      | CED | BW  | WW   | YW   | RADG  | SC   | HP   | CEM | Milk |
|------|-----|-----|------|------|-------|------|------|-----|------|
| Sire | 9   | 2   | 69   | 130  | 0.35  | 0.78 | 15.5 | 10  | 33   |
|      | 30% | 70% | 35%  | 25%  | 2%    | 55%  | 15%  | 35% | 15%  |
| Dam  | 1   | 4.3 | 100  | 169  | 0.32  | 2.01 | 6.3  | 10  | 40   |
|      | 85% | 95% | 1%   | 1%   | 4%    | 2%   | 95%  | 30% | 1%   |
|      | Doc | CW  | Marb | RE   | Fat   | \$M  | \$W  | \$B | \$C  |
| Sire | 18  | 68  | 2.35 | 0.94 | 0.012 | 52   | 64   | 268 | 400  |
|      | 50% | 10% | 1%   | 10%  | 50%   | 75%  | 40%  | 1%  | 1%   |
| Dam  | 21  | 84  | 1.4  | 0.83 | 0.029 | 72   | 96   | 214 | 350  |
|      | 30% | 1%  | 2%   | 15%  | 75%   | 20%  | 1%   | 1%  | 1%   |



**POWELL ERICA 8075**  
**FLUSH MATE TO POWELL ERICA 8075**



**EAR PRIME TIME 0002**

**Consigner: Cantrell Creek Angus Travis Cantrell 417-872-5570**  
 8075 is a flush sister to the dam of Jonesboro, Hollywood, and Williams CC Prime Reg. When you combine the excellent phenotype and power of the Erica line, with the exceptional EPDs and popularity of Prime Time you are on to something special! Note the RADG, Growth, and Carcass traits in this mating. This mating is primed to create the next big thing, get the donor pen ready for this gal!  
 Selling 3 IVF SXF Embryos Guarantee 1 Pregnancy if transferred by an AETA certified embryologist or Whitaker Embryo services. Buyer will be furnished with certificate of embryo transfer.

**EMBRYOS**

**OGEECHEE IDENTIFIED 03 X**

**66**

**SEO ULTRA PROVIDER**

4 Conventional Embryos Guarantee 2 Pregnancies

G A R Momentum K836

Located at Oakdale Rome, GA

SEO Ultra Provider (Reg # 19495995)

Shipper Tanks available

Chair Rock Progress 3023

Mill Brae Identified 4031

Ogeechee Identified 03 (Reg # 19741534)

Ogeechee Sure Fire 6013



**OGEECHEE SURE FIRE 6013  
DAM OF OGEECHEE IDENTIFIED 03**



**MILL BRAE IDENTIFIED 4031  
SIRE OF OGEECHEE IDENTIFIED 03**

|      | CED | BW   | WW   | YW   | RADG   | SC   | HP   | CEM | Milk |
|------|-----|------|------|------|--------|------|------|-----|------|
| Sire | 6   | 3    | 82   | 157  | 0.33   | 0.46 | 12   | 7   | 31   |
|      | 55% | 85%  | 10%  | 3%   | 5%     | 75%  | 50%  | 65% | 20%  |
| Dam  | 10  | -0.8 | 67   | 119  | 0.27   | 0.93 | 16.1 | 11  | 26   |
|      | 20% | 10%  | 25%  | 25%  | 25%    | 40%  | 10%  | 25% | 55%  |
|      | Doc | CW   | Marb | RE   | Fat    | \$M  | \$W  | \$B | \$C  |
| Sire | 20  | 81   | 1.81 | 0.88 | -0.013 | 45   | 65   | 253 | 373  |
|      | 40% | 2%   | 1%   | 15%  | 20%    | 85%  | 35%  | 1%  | 1%   |
| Dam  | 20  | 61   | 1.66 | 0.78 | 0.077  | 89   | 70   | 217 | 370  |
|      | 35% | 10%  | 1%   | 20%  | 95%    | 2%   | 15%  | 1%  | 1%   |

Consigner: Oakdale Farms Judy & Bill Watters 706-346-6445

The Identified daughters are known for their admirable profile, clean front, carcass merit and superior phenotype. SEO Ultra Provider has proven himself as a true kingmaker, siring Hustler & Ambitious. When you combine the phenotype and genetic potential in this mating, the offspring could overthrow Sire and Dam. Be sure to really study this mating, as I believe it could be something super special.

Selling 4 Conventional Embryos Guarantee 2 Pregnancies if transferred by an AETA certified embryologist, licensed vet or Whitaker Embryo services. Buyer will be furnished with certificate of embryo transfer.



**SEO ULTRA PROVIDER**

**KRAUS HENRIETTA PRIDE 349 X**

**67**

**KC KINGSTON**

3 IVF Embryos Guarantee 1 Pregnancy

Poss Ratified

Located at Transova Chillicothe, MO

KC Kingston (Reg # 20549194)

KC Blackbird 017

Linz Exemplify 71124

Kraus Henrietta Pride 349 (Reg # 20109196)

Vintage Henrietta Pride 7202



**VINTAGE HENRIETTA PRIDE 7202  
DAM OF KRAUS HENRIETTA PRIDE 349**

|      | CED | BW  | WW   | YW   | RADG  | SC   | HP   | CEM | Milk |
|------|-----|-----|------|------|-------|------|------|-----|------|
| Sire | 10  | 1   | 91   | 148  | 0.29  | 1.28 | 15.1 | 8   | 28   |
|      | 20% | 45% | 2%   | 10%  | 25%   | 25%  | 20%  | 55% | 40%  |
| Dam  | 12  | -1  | 75   | 123  | 0.24  | 1.03 | 12.6 | 11  | 30   |
|      | 10% | 10% | 10%  | 20%  | 45%   | 35%  | 40%  | 25% | 25%  |
|      | Doc | CW  | Marb | RE   | Fat   | \$M  | \$W  | \$B | \$C  |
| Sire | 38  | 81  | 1.3  | 1.07 | 0.065 | 110  | 94   | 220 | 395  |
|      | 1%  | 3%  | 10%  | 10%  | 95%   | 1%   | 1%   | 2%  | 1%   |
| Dam  | 21  | 63  | 0.74 | 0.85 | 0.064 | 80   | 81   | 167 | 297  |
|      | 30% | 10% | 30%  | 15%  | 95%   | 10%  | 2%   | 15% | 5%   |

Consigner: Crooked Creek Beef Bill McLaren 314-960-0212

Be the first to own a Kingston calf! Kingston is one of the few bulls who breaks the barrier with his set of economic indices ranking over 100 for \$Maternal, & 200 for \$Beef. Henrietta Pride 7202 is a direct daughter of, PF CC&7 Henrietta Pride 1044. 7202 is a maternal sister to the dam of VAR Legend and her maternal grandam is the \$380,000 breed-impacting donor who is best known as a flush sister to Sitz Upward 370R. The Henrietta Pride Cow Family carries a powerful look, bold hip, and strong top line, when you combine that with the young upcoming stud Kingston, your are on to something!

Selling 3 IVF Embryos Guarantee 1 Pregnancy if transferred by an AETA certified embryologist or Whitaker Embryo services. Buyer will be furnished with certificate of embryo transfer.



**KC KINGSTON**

**HAF VERACIOUS H162 X**

**68**

**GB FIRESIDE 115**

3 IVF Embryos Guarantee 1 Pregnancy

GB Fireball 672

Located at Cross Country Manhattan, KS

GB Fireside 115 (Reg # 20393678)

GB Ashland 818

HPCA Veracious

HAF Veracious H162 (Reg # 20506980)

FF Rita 9B39 of A18K 3S10



**HPCA VERACIOUS  
SIRE OF HAF VERACIOUS H162**

|      | CED | BW  | WW   | YW   | RADG   | SC   | HP   | CEM | Milk |
|------|-----|-----|------|------|--------|------|------|-----|------|
| Sire | 10  | 1.2 | 84   | 146  | 0.31   | 1.22 | 10.6 | 14  | 34   |
|      | 20% | 50% | 10%  | 10%  | 15%    | 30%  | 70%  | 10% | 10%  |
| Dam  | 5   | 2   | 69   | 126  | 0.33   | 0.18 | 8.5  | 8   | 37   |
|      | 60% | 70% | 30%  | 25%  | 10%    | 90%  | 85%  | 55% | 3%   |
|      | Doc | CW  | Marb | RE   | Fat    | \$M  | \$W  | \$B | \$C  |
| Sire | 26  | 78  | 2.04 | 1.54 | 0.029  | 60   | 83   | 258 | 395  |
|      | 20% | 4%  | 1%   | 1%   | 75%    | 65%  | 3%   | 1%  | 1%   |
| Dam  | 19  | 68  | 1.47 | 1.65 | -0.004 | 73   | 74   | 235 | 378  |
|      | 50% | 15% | 4%   | 1%   | 30%    | 25%  | 15%  | 1%  | 1%   |

Consigner: Hirschy Angus Farm Roger Hirschy 407-497-8552

HAF Veracious H162 carcass power house, note her TOP 4% Marb, TOP 1% RE, and TOP 1% \$B & \$C. With the passing of Veracious these good daughters of his are becoming a hot commodity. GB Fireside 115 is the \$84,000 Top Selling Bull from the Spring 2023 Louisiana Angus Association Sale. GB Fireside with his double digit calving ease, excellent growth, huge RE and Marbling figures creates an excellent blend of genetics. All of that and TOP 1% \$B & \$C. A nice combination of two proven sires in the industry.

Selling 3 IVF Embryos Guarantee 1 Pregnancy if transferred by an AETA certified embryologist or Whitaker Embryo services. Buyer will be furnished with certificate of embryo transfer.



**GB FIRESIDE 115**

*Embryos*

Embryos

**EMBRYOS**

**69 WILLIAMS F KARAMA 710-399 X ANKONIAN PARAGON 0C4**

3 IVF Embryos Guarantee 1 Pregnancy  
 Located at A&B Angus Portland, TN  
 G A R Combustion  
**Ankonian Paragon 0C4 (Reg # 19719477)** Shipper Tanks available  
 G A R Early Bird N985  
 GB Fireball 672  
**Williams F Karama 710-399 (Reg # 19850759)**  
 Williams Karama L 432-489



**WILLIAMS F KARAMA 710-399**

|      | CED | BW  | WW   | YW   | RADG   | SC   | HP   | CEM | Milk |
|------|-----|-----|------|------|--------|------|------|-----|------|
| Sire | 6   | 2.1 | 79   | 145  | 0.36   | 0.19 | 14.8 | 14  | 29   |
|      | 55% | 70% | 15%  | 10%  | 2%     | 90%  | 20%  | 10% | 35%  |
| Dam  | 11  | 1.2 | 73   | 134  | 0.32   | 1.32 | 12.6 | 12  | 33   |
|      | 15% | 45% | 15%  | 10%  | 4%     | 20%  | 40%  | 15% | 15%  |
|      | Doc | CW  | Marb | RE   | Fat    | \$M  | \$W  | \$B | \$C  |
| Sire | 30  | 77  | 1.56 | 1.22 | -0.025 | 66   | 69   | 246 | 385  |
|      | 10% | 4%  | 1%   | 1%   | 10%    | 40%  | 25%  | 1%  | 1%   |
| Dam  | 21  | 70  | 1.69 | 0.85 | 0.015  | 59   | 71   | 231 | 359  |
|      | 30% | 4%  | 1%   | 15%  | 55%    | 55%  | 10%  | 1%  | 1%   |

**Consigner: A&B Angus Eric Abutrab 615-812-8657**  
 Karama 710-399 is a proven producer with her average progeny selling for \$9500. Note the spread of CED, Growth, and feed efficiency in this female. This planned mating should have a nice combination of growth, feed efficiency, and carcass traits. With the passing of Paragon here is a chance to obtain some of his desirable genetics with a proven donor.  
 Selling 3 IVF Embryos Guarantee 1 Pregnancy if transferred by an AETA certified embryologist or Whitaker Embryo services. Buyer will be furnished with certificate of embryo transfer.



**ANKONIAN PARAGON 0C4**

**70 HR RITA 0018 X HPCA VERACIOUS**

2 Conventional Embryos Guarantee 1 Pregnancy  
 Located at Bluestem Carlton, KS  
 Mill Brae Identified 4031  
**HPCA Veracious (Reg # 19699322)**  
 H P C A Sunrise A246  
 GB Fireball 672  
**HR Rita 0018 (Reg # 19657459)**  
 VC Rita 5056



**HR RITA 0018**

|      | CED | BW  | WW   | YW   | RADG   | SC   | HP   | CEM | Milk |
|------|-----|-----|------|------|--------|------|------|-----|------|
| Sire | 10  | 0.5 | 75   | 135  | 0.31   | 0.04 | 10.4 | 9   | 33   |
|      | 25% | 35% | 20%  | 20%  | 15%    | 95%  | 70%  | 45% | 15%  |
| Dam  | 5   | 4.1 | 86   | 157  | 0.38   | 1.83 | 8.7  | 10  | 23   |
|      | 55% | 95% | 2%   | 1%   | 1%     | 4%   | 85%  | 30% | 75%  |
|      | Doc | CW  | Marb | RE   | Fat    | \$M  | \$W  | \$B | \$C  |
| Sire | 20  | 64  | 1.92 | 1.33 | 0.023  | 77   | 77   | 238 | 386  |
|      | 40% | 15% | 1%   | 1%   | 65%    | 15%  | 10%  | 1%  | 1%   |
| Dam  | 18  | 80  | 1.56 | 1.37 | -0.027 | 37   | 62   | 247 | 357  |
|      | 45% | 1%  | 1%   | 1%   | 10%    | 95%  | 30%  | 1%  | 1%   |

**Consigner: Hirschy Angus Farm Roger Hirschy 407-497-8552**  
 Rita 0018 is the \$35,000 valuation donor from the now dispersed High Roller Angus. She has a long body, ton of capacity, and a superb set of numbers, be sure to circle how many TOP 1%'s are in her EPDs. When you sort for CW, Marbling and REA, Veracious is at the top of the Charts, he is backed by a sunrise dam who is described by many as one of the best cows walking the planet right now. This is an expertly planned mating by Roger.  
 Selling 2 conventional Embryos Guarantee 1 Pregnancy if transferred by an AETA certified embryologist or Whitaker Embryo services. Buyer will be furnished with certificate of embryo transfer.



**HPCA VERACIOUS**

**71 OGEECHEE HOME TOWN 042 X HPCA VERACIOUS**

3 IVF Embryos Guarantee 1 Pregnancy  
 Located at A&B Angus Portland, TN  
 Mill Brae Identified 4031  
**HPCA Veracious (Reg # 19699322)** Shipper Tanks available  
 H P C A Sunrise A246  
 G A R Home Town  
**Ogeechee Home Town 042 (Reg # 20008107)**  
 Ogeechee Niagara 717



**OGEECHEE HOME TOWN 042**

|      | CED | BW  | WW   | YW   | RADG   | SC   | HP   | CEM | Milk |
|------|-----|-----|------|------|--------|------|------|-----|------|
| Sire | 10  | 0.5 | 75   | 135  | 0.31   | 0.04 | 10.4 | 9   | 33   |
|      | 25% | 35% | 20%  | 20%  | 15%    | 95%  | 70%  | 45% | 15%  |
| Dam  | 3   | 3.3 | 69   | 119  | 0.26   | 0.35 | 13.2 | 9   | 27   |
|      | 70% | 90% | 20%  | 25%  | 30%    | 80%  | 35%  | 45% | 45%  |
|      | Doc | CW  | Marb | RE   | Fat    | \$M  | \$W  | \$B | \$C  |
| Sire | 20  | 64  | 1.92 | 1.33 | 0.023  | 77   | 77   | 238 | 386  |
|      | 40% | 15% | 1%   | 1%   | 65%    | 15%  | 10%  | 1%  | 1%   |
| Dam  | 19  | 59  | 1.46 | 1.2  | -0.061 | 70   | 60   | 214 | 348  |
|      | 40% | 15% | 1%   | 1%   | 1%     | 25%  | 40%  | 1%  | 1%   |

**Consigner: A&B Angus Eric Abutrab 615-812-8657**  
 ABA Paragon 3626 is a direct daughter of 042 this +396 \$C female, sold to Butz-Hill September of 2023 for \$14,000. 042 is proving herself as an excellent young donor with two other calves having 389 \$C and 412\$. With the passing of Veracious these rare embryos out of a proven DNA upgrader could create something quite remarkable.  
 Selling 3 IVF Embryos Guarantee 1 Pregnancy if transferred by an AETA certified embryologist or Whitaker Embryo services. Buyer will be furnished with certificate of embryo transfer.



**HPCA VERACIOUS**



**It pays to stay late!**  
**A special sale attraction**  
**Flush Opportunity**

**FLUSH OPPORTUNITY**

**72 4 SONS BLACKCAP 7K14**

Cow DOB: 9/3/22 Tattoo: Cow Reg: 20476471

G A R Ashland  
 G A R Home Town  
 Chair Rock Sure Fire 6095  
 V A R Discovery 2240  
 Vintage Blackcap 6018  
 V A R Blackcap 9319

|     |  |
|-----|--|
| BW  |  |
| ADJ |  |
| ADJ |  |
| YW  |  |



**VINTAGE BLACKCAP 6018**  
**DAM OF 4 SONS BLACKCAP 7K14**

| CED | BW  | WW   | YW   | RADG   | SC   | HP   | CEM | Milk |
|-----|-----|------|------|--------|------|------|-----|------|
| 12  | 1.4 | 87   | 153  | 0.32   | 1.99 | 16.3 | 13  | 20   |
| 10% | 55% | 4%   | 4%   | 15%    | 3%   | 10%  | 10% | 90%  |
| Doc | CW  | Marb | RE   | Fat    | \$M  | \$W  | \$B | \$C  |
| 22  | 74  | 1.88 | 1.07 | -0.044 | 66   | 73   | 249 | 389  |
| 35% | 10% | 1%   | 10%  | 3%     | 45%  | 15%  | 1%  | 1%   |

**ANGUS GS**

| CED | BW | WW | YW | SC | Doc | HP | CEM | Milk | CW | Marb | RE | Fat |
|-----|----|----|----|----|-----|----|-----|------|----|------|----|-----|
| 22  | 45 | 39 | 18 | 3  | 33  | 19 | 24  | 86   | 21 | 1    | 21 | 2   |

Consigner: 3/0 Angus Wes Ogle 417-448-4126

An opportunity to flush one of the TOP Donors at 3/0 Angus. 7K14 offers a rare combination of double digit calving ease, explosive growth, massive fertility, and supreme carcass traits! Imagine the possibilities with this female, and her game changing genetics to the Bull of your choice! The possibilities are endless.

Guaranteeing a minimum of 6 Embryos with no cap and a Guarantee of 2 Pregnancies if transferred by an AETA certified embryologist or Whitaker Embryo services. Buyer is responsible for all flush, semen, and shipping costs.

**3 Ways to Bid**

**#1**  
**Join Us**  
**April 13, 2024**  
**in person**  
**at Wright County**  
**Livestock**  
**in**  
**Mountain Grove, MO**

**#2**  
**Ring Side**  
**Phone Bidding**  
**Adam Conover**  
**816-676-8560**  
**Jon Powers**  
**913-424-4231**  
**Julie Conover**  
**734-260-8635**  
**Drew Simon**  
**417-838-2521**  
**James Hayes**  
**417-254-1699**

**#3**  
**Bid Online**  
**at**  
**www.LiveWireAuction.com**

**Trucking arrangements available**

*Flush Opportunity*

**W**<sup>Wiles</sup>  
**R**<sup>Ridge</sup>  
**R**<sup>Ranch</sup>

REGISTERED ANGUS  
BULLS FEMALES  
WILLOW SPRINGS, MO

*Private Treaty Sales*

TRUMAN WILES 417-252-0726

[www.WilesRidgeRanch.com](http://www.WilesRidgeRanch.com)

**BLUE MOUND**  
**ANGUS** 

REGISTERED ANGUS BULLS & FEMALES  
*Performance & Genomic Enhanced EPDs*  
*Private Treaty Sales*

Eldorado Springs, MO  
Fred Swartzentruber 417-327-3752  
Sheldon Swartzentruber 417-327-5885

*Simon's Tall Pines*



Private Treaty Sales Registered Angus

Larry & Drew Simon  
Willow Springs, MO 417-469-3352

**4N** *Performance & Show*

ANGUS FARMS  
Mountain Grove, MO

Roger 417-926-2549  
Justin 417-926-2603





**RICHARDS** **BROTHERS**

Animal Nutrition Pasture Care Lawn & Garden Farm & Home Supplies

**417-256-3911**

*Welcome to Cattle Country!*  
Your cattle's health and nutrition is our number one priority.

We have the experience, knowledge and products that deliver results.

**Richard Brothers is here for your cattle operation!**

114 W. 2nd Street West Plains, MO 65775  
Monday - Friday 7:30 AM - 5:00 PM  
Saturday 7:30 AM - 12:00 PM

  
**Hostetler**  
BUILDINGS  
417.345.7418

— BUILDING YOUR —  
**DREAMS**



**Kropf Feeds**



**365  
CATTLE  
MINERAL**

BUY 10 GET 1 FREE  
WHILE SUPPLIES LAST!

19 Prairie Lane  
Buffalo, MO 65622

**417-733-2501**

[www.KropfFeeds.com](http://www.KropfFeeds.com)

**We Finance Land**

*..... and just about everything to go with it.*

By keeping our loans local,  
we're in the business  
of making dreams a reality.



**BTCBANK**

Community Minded...  
Just Like You

Member  
**FDIC**

[www.btcbank.bank](http://www.btcbank.bank)

1505 South Ash St., Buffalo | 417-345-2113



**LIVE WIRE AUCTION**

[WWW.LIVEWIREAUCTION.COM](http://WWW.LIVEWIREAUCTION.COM)

*Live & Online Sales*

**EUROPEAN IMPORTED  
CHAMPION ROTTWEILERS**



*Puppies  
Available*



**JASON HUFFMAN  
417-204-3564**

**LS** Tractor  
**Mahindra**



MASSEY FERGUSON



**FERRIS**

**KRONE**



**STIHL**

**Priefert**  
Farm, Ranch & Kடை

**ARROWQUIP**

**HUBBARD**  
a **Wesco** company

**Cargill**

**ADM**

**Wrangler**

**ARIAT**

# HIRSCH

FEED & FARM  
SUPPLY, INC.

RENTAL • PARTS • SERVICE • FEED • FENCE • EQUIPMENT  
OPEN 7AM - 7PM 789 WORLEY DRIVE - WEST PLAINS, MO  
MONDAY-SATURDAY [hirschfeed.com](http://hirschfeed.com) • (417) 256-3749



We're rooting for you,

*and your farm*

You're doing big things, and we're here to help you do more.  
That's why we're invested in you, because when you  
succeed - the community succeeds.



**Southern**  
BANK

Equal Housing Lender | Member FDIC

960 Preacher Roe Blvd.  
West Plains, MO 65775

1599 Porter Wagoner  
West Plains, MO 65775



*Thank You to All the Bidders & Buyers  
at the Fall 2023 Sale*

*Thank you*

**PAUL WHITLOCK**

for Purchasing the  
Top Selling Pair

**LOT 24**

**WRR FOREVER LASSIE 996**



*All buyers invited to view the sale animals morning of sale day*

*Join us for donuts & coffee sale day morning*

*Juniors sign up for \$100 drawing*



*Sale Location: 8915 Business 60, Mountain Grove, MO*

**STANDOUT GENETICS  
MOUNTAIN GROVE, MO  
APRIL 13, 2024**

## Index Of Consigners

---

3/0 Cattle Co Wes Ogle 417-448-4126 ..... 26, 32, 62, 64, 72

---

3M Angus David Montgomery 417-252-1050..... 8, 12

---

A&B Angus Eric Abutrab 615-812-8657 ..... 69, 71

---

Asher Farms Tom & Tracy Asher 417-257-3220 ..... 51

---

Beau's Black Angus Beau Davis 417-880-6863 ..... 6

---

Blue Mound Angus Fred Swartzentruber 417-327-3752 ..... 30, 33, 35, 55

---

BrubakerGeneticsEmanuelBrubaker417-660-5189..... 4,5,25,27,52

---

Cantrell Creek Angus Travis Cantrell 417-872-5570 ..... 1, 2, 7,  
40, 41, 65

---

Crooked Creek Beef Bill McLaren 314-960-0212 ..... 53, 56, 67

---

DHT Angus Cecil Huff 417-250-1300 ..... 11,13

---

Hirschy Angus Farm Roger Hirschy 407-497-8552 ..... 60, 68, 70

---

Kates Angus Farms Rob Kates 217-259-2168 ..... 15, 16, 17, 18

---

Oakdale Farms Judy & Bill Watters 706-346-6445 ..... 66

---

Simon's Tall Pines Drew Simon 417-838-2521 ..... 9, 21, 21A

---

Smith Valley Angus Kim & Brian Smith 573-729-2910 ..... 61, 63

---

Wiles Ridge Ranch Truman Wiles 417-252-0726 ..... 3, 10, 14, 20, 20A, 22 &  
22A, 23 & 23A, 31, 34, 54

---



SALE MANAGER  
PHOEBE WILES  
PO BOX 23  
WILLOW SPRINGS, MO 65793